

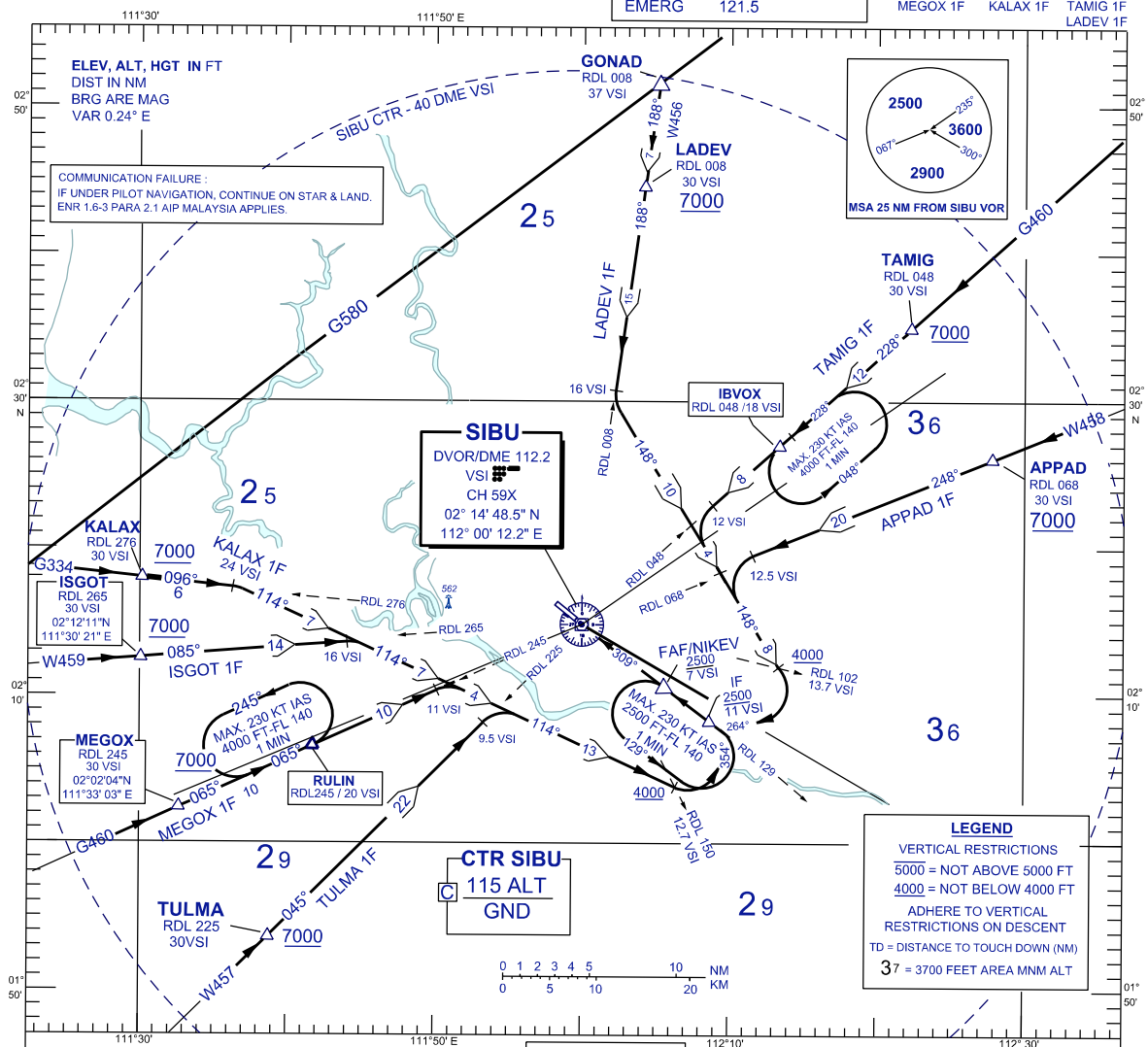
**STANDARD ARRIVAL CHART
INSTRUMENT (STAR) - ICAO**

TRANSITION ALTITUDE
11 000 FT

APP	122.6(P), 124.4 (S)
TWR	123.2
SMC	121.9
ATIS	127.65
EMERG	121.5

**SIBU/SIBU (WBGS)
RWY 31
(VOR/DME)**

TULMA 1F	ISGOT 1F	APPAD 1F
MEGOX 1F	KALAX 1F	TAMIG 1F
		LADEV 1F



- TULMA ONE FOXTROT ARRIVAL**
MEGOX ONE FOXTROT ARRIVAL
ISGOT ONE FOXTROT ARRIVAL
KALAX ONE FOXTROT ARRIVAL
- TULMA ONE FOXTROT ARRIVAL**
- FROM TULMA TRACK ON RDL 225 VSI VOR INBOUND
 - AT 9.5 DME VSI TURN RIGHT TRACK 114°
 - ON CROSSING RDL 150, TURN LEFT, TRACK 354°
 - TO INTERCEPT RDL 129 FOR VOR/DME APPROACH
- MEGOX ONE FOXTROT ARRIVAL / FROM RULIN HOLD**
- FROM MEGOX OR RULIN TRACK ON RDL 245 VSI VOR INBOUND
 - AT 11 DME VSI TURN RIGHT TRACK 114°
 - ON CROSSING RDL 150, TURN LEFT, TRACK 354°
 - TO INTERCEPT RDL 129 FOR VOR/DME APPROACH
- ISGOT ONE FOXTROT ARRIVAL**
- FROM ISGOT TRACK ON RDL 265 VSI VOR INBOUND
 - AT 16 DME VSI TURN RIGHT TRACK 114°
 - ON CROSSING RDL 150, TURN LEFT, TRACK 354°
 - TO INTERCEPT RDL 129 FOR VOR/DME APPROACH
- KALAX ONE FOXTROT ARRIVAL**
- FROM KALAX TRACK ON RDL 276 VSI VOR INBOUND
 - AT 24 DME VSI TURN RIGHT TRACK 114°
 - ON CROSSING RDL 150, TURN LEFT, TRACK 354°
 - TO INTERCEPT RDL 129 FOR VOR/DME APPROACH

- STAR RWY 31 - VOR/DME**
- APPAD ONE FOXTROT ARRIVAL**
TAMIG ONE FOXTROT ARRIVAL
LADEV ONE FOXTROT ARRIVAL
- APPAD ONE FOXTROT ARRIVAL**
- FROM APPAD TRACK ON RDL 068° VSI VOR INBOUND
 - AT 12.5 DME VSI TURN LEFT TRACK 148°
 - ON CROSSING RDL 102, TURN RIGHT, TRACK 264°
 - TO INTERCEPT RDL 129 FOR VOR/DME APPROACH
- TAMIG ONE FOXTROT ARRIVAL / FROM IBOX HOLD**
- FROM TAMIG OR IBOX TRACK ON RDL 048° VSI VOR INBOUND
 - AT 12 DME VSI TURN LEFT TRACK 148°
 - ON CROSSING RDL 102, TURN RIGHT, TRACK 264°
 - TO INTERCEPT RDL 129 FOR VOR/DME APPROACH
- LADEV ONE FOXTROT ARRIVAL**
- FROM LADEV TRACK ON RDL 008° VSI VOR INBOUND
 - AT 16 DME VSI TURN LEFT TRACK 148°
 - ON CROSSING RDL 102, TURN RIGHT, TRACK 264°
 - TO INTERCEPT RDL 129 FOR VOR/DME APPROACH

CHANGES : UPDATING THE CHART FORMAT