

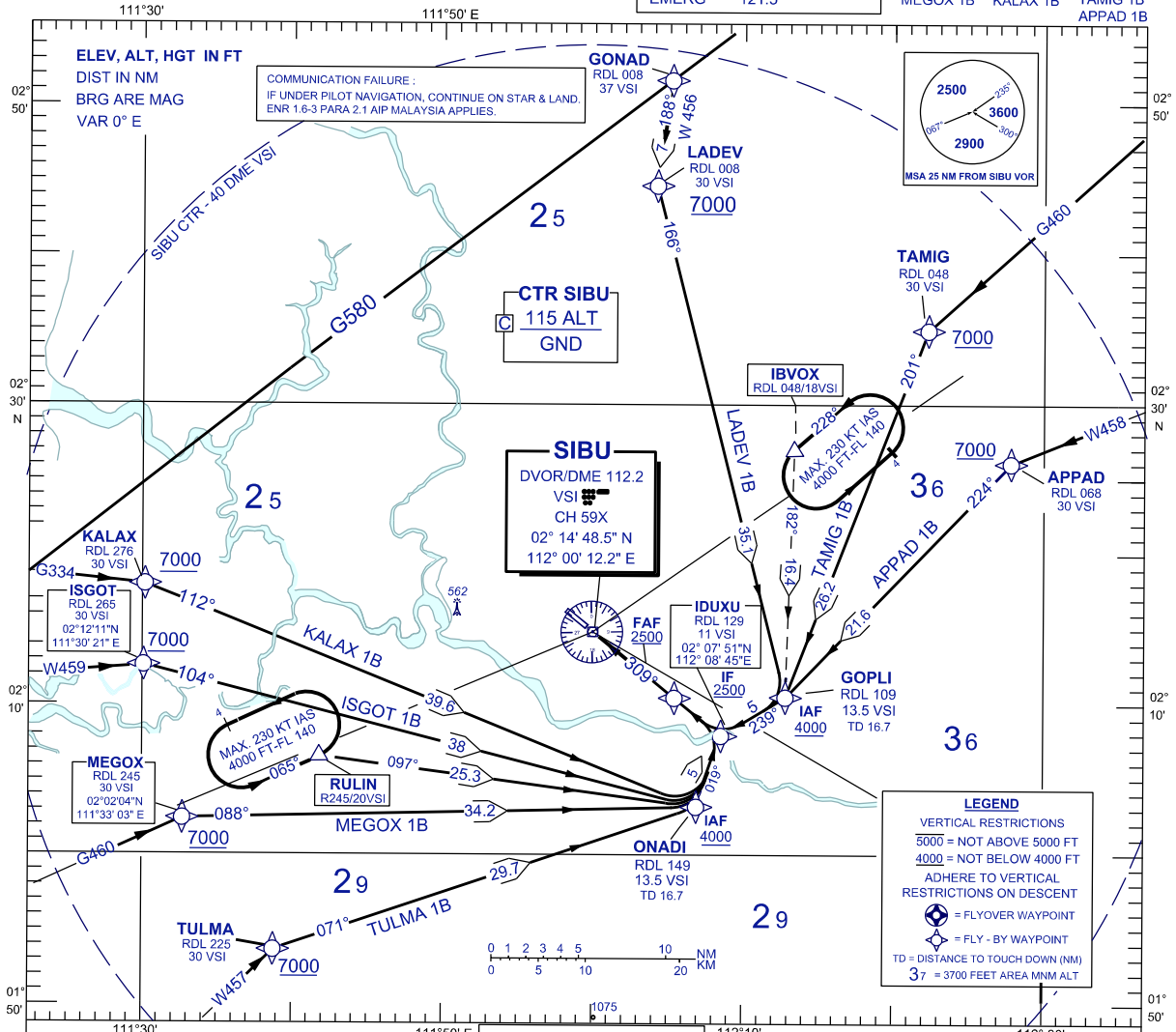
**STANDARD ARRIVAL CHART  
INSTRUMENT (STAR) - ICAO**

TRANSITION ALTITUDE  
11 000 FT

APP 122.6(P), 124.4 (S)  
TWR 123.2  
SMC 121.9  
ATIS 127.65  
EMERG 121.5

**SIBU/SIBU (WBGS)  
RWY 31  
RNAV (VOR/DME)**

TULMA 1B ISGOT 1B LADEV 1B  
MEGOX 1B KALAX 1B TAMIG 1B  
APPAD 1B



<b>STAR RWY 31 - RNAV</b>	
<p><b>TULMA ONE BRAVO ARRIVAL</b> MEGOX ONE BRAVO ARRIVAL ISGOT ONE BRAVO ARRIVAL KALAX ONE BRAVO ARRIVAL</p> <p><b>TULMA ONE BRAVO ARRIVAL</b></p> <ul style="list-style-type: none"> <li>FROM TULMA TRACK 071° TO ONADI, THEN TO IDUXU</li> <li>FROM IDUXU TRACK 309° TO FAF FOR RNAV OR VOR/DME APPROACH</li> </ul> <p><b>MEGOX ONE BRAVO ARRIVAL</b></p> <ul style="list-style-type: none"> <li>FROM MEGOX TRACK 088° TO ONADI, THEN TO IDUXU</li> <li>FROM IDUXU TRACK 309° TO FAF FOR RNAV OR VOR/DME APPROACH</li> </ul> <p><b>ISGOT ONE BRAVO ARRIVAL</b></p> <ul style="list-style-type: none"> <li>FROM ISGOT TRACK 104° TO ONADI, THEN TO IDUXU</li> <li>FROM IDUXU TRACK 309° TO FAF FOR RNAV OR VOR/DME APPROACH</li> </ul> <p><b>KALAX ONE BRAVO ARRIVAL</b></p> <ul style="list-style-type: none"> <li>FROM KALAX TRACK 112° TO ONADI, THEN TO IDUXU</li> <li>FROM IDUXU TRACK 309° TO FAF FOR RNAV OR VOR/DME APPROACH</li> </ul> <p><b>FROM RULIN HOLD</b></p> <ul style="list-style-type: none"> <li>*FROM RULIN TRACK 097° TO ONADI, THEN TO IDUXU</li> <li>*FROM IDUXU TRACK 309° TO FAF FOR RNAV OR VOR/DME APPROACH</li> </ul>	<p><b>LADEV ONE BRAVO ARRIVAL</b> TAMIG ONE BRAVO ARRIVAL APPAD ONE BRAVO ARRIVAL</p> <p><b>APPAD ONE BRAVO ARRIVAL</b></p> <ul style="list-style-type: none"> <li>FROM APPAD TRACK 224° TO GOPLI, THEN TO IDUXU</li> <li>FROM IDUXU TRACK 309° TO FAF FOR RNAV OR VOR/DME APPROACH</li> </ul> <p><b>TAMIG ONE BRAVO ARRIVAL</b></p> <ul style="list-style-type: none"> <li>FROM TAMIG TRACK 201° TO GOPLI, THEN TO IDUXU</li> <li>FROM IDUXU TRACK 309° TO FAF FOR RNAV OR VOR/DME APPROACH</li> </ul> <p><b>LADEV ONE BRAVO ARRIVAL</b></p> <ul style="list-style-type: none"> <li>FROM LADEV TRACK 166° TO GOPLI, THEN TO IDUXU</li> <li>FROM IDUXU TRACK 309° TO FAF FOR RNAV OR VOR/DME APPROACH</li> </ul> <p><b>FROM IBVOX HOLD</b></p> <ul style="list-style-type: none"> <li>FROM IBVOX TRACK 182° TO GOPLI, THEN TO IDUXU</li> <li>FROM IDUXU TRACK 309° TO FAF FOR RNAV OR VOR/DME APPROACH</li> </ul>

CHANGES : UPDATING THE CHART FORMAT