

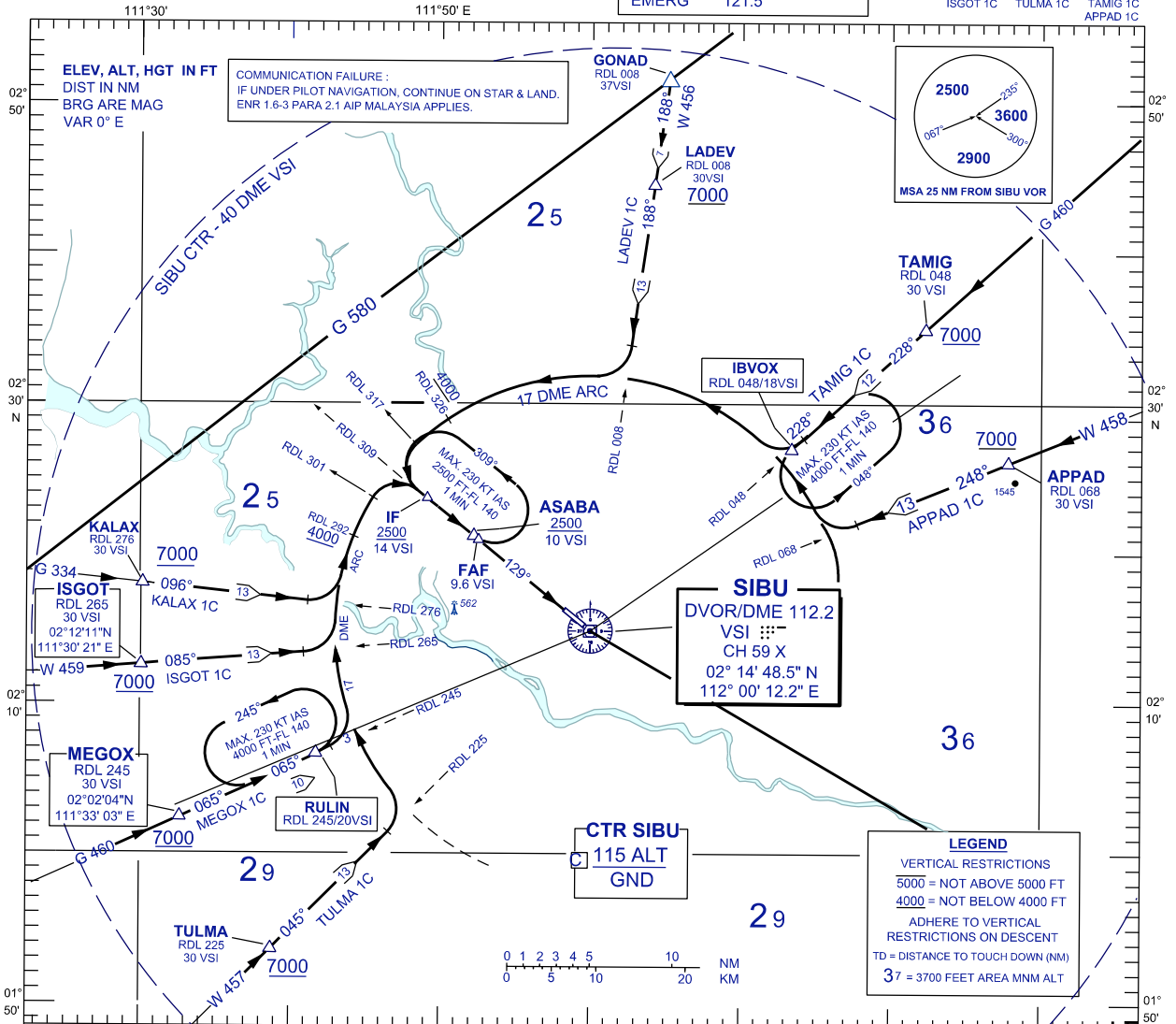
**STANDARD ARRIVAL CHART  
INSTRUMENT (STAR) - ICAO**

TRANSITION ALTITUDE  
11 000 FT

APP	122.6(P), 124.4 (S)
TWR	123.2
SMC	121.9
ATIS	127.65
EMERG	121.5

**SIBU/SIBU (WBGS)  
RWY 13**

VOR/DME ARC  
KALAX 1C MEGOX 1C LADEV 1C  
ISGOT 1C TULMA 1C TAMIG 1C  
APPAD 1C



**KALAX ONE CHARLIE ARRIVAL**  
ISGOT ONE CHARLIE ARRIVAL  
MEGOX ONE CHARLIE ARRIVAL  
TULMA ONE CHARLIE ARRIVAL

**KALAX ONE CHARLIE ARRIVAL**

- FROM KALAX TRACK ON RDL 276 VSI VOR INBOUND

**ISGOT ONE CHARLIE ARRIVAL**

- FROM ISGOT TRACK ON RDL 265 VSI VOR INBOUND

**MEGOX ONE CHARLIE ARRIVAL / FROM RULIN HOLD**

- FROM MEGOX OR RULIN TRACK ON RDL 245 VSI VOR INBOUND

**TULMA ONE CHARLIE ARRIVAL**

- FROM TULMA TRACK ON RDL 225 VSI VOR INBOUND

**FROM KALAX, ISGOT, MEGOX, RULIN OR TULMA ARRIVAL**

- WHEN APPROPRIATELY POSITIONED, TURN LEFT
- TO FLY 17 DME ARC VSI
- ON CROSSING LR-301, TURN RIGHT
- TO INTERCEPT LOC FOR ILS APPROACH OR RDL 309 FOR VOR/DME APPROACH

**STAR RWY 13  
- VOR/DME ARC**

**LADEV ONE CHARLIE ARRIVAL**  
TAMIG ONE CHARLIE ARRIVAL  
APPAD ONE CHARLIE ARRIVAL

**LADEV ONE CHARLIE ARRIVAL**

- FROM LADEV TRACK ON RDL 008 VSI VOR INBOUND

**TAMIG ONE CHARLIE ARRIVAL / FROM IBVOX HOLD**

- FROM TAMIG OR IBVOX TRACK ON RDL 048 VSI VOR INBOUND

**APPAD ONE CHARLIE ARRIVAL**

- FROM APPAD TRACK ON RDL 068 VSI VOR INBOUND

**FROM LADEV, TAMIG, IBVOX OR APPAD ARRIVAL**

- WHEN APPROPRIATELY POSITIONED, TURN RIGHT
- TO FLY 17 DME ARC VSI
- ON CROSSING LR-317, TURN LEFT
- TO INTERCEPT LOC FOR ILS APPROACH OR RDL 309 FOR VOR/DME APPROACH

CHANGES : UPDATING THE FORMAT CHART