

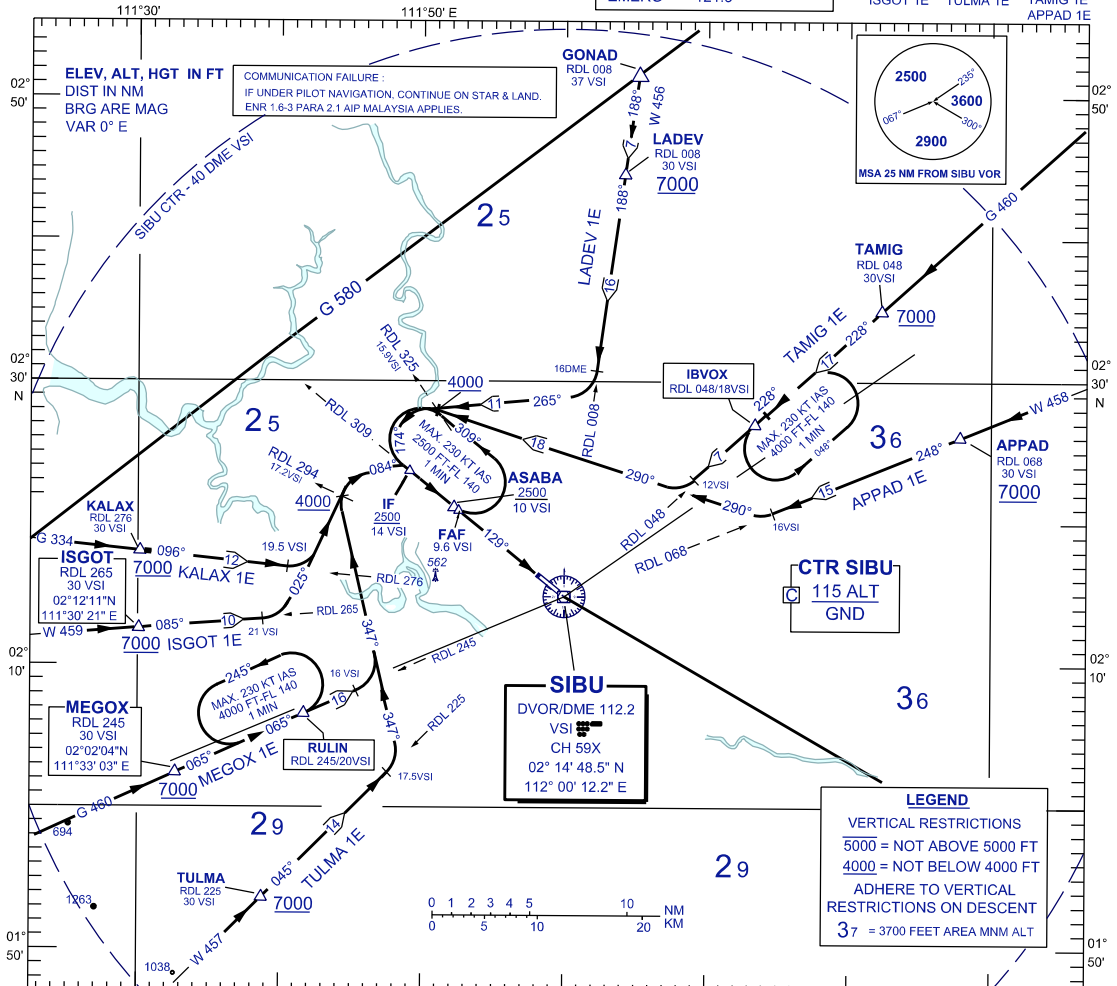
**STANDARD ARRIVAL CHART
INSTRUMENT (STAR) - ICAO**

TRANSITION ALTITUDE
11 000 FT

APP 122.6(P), 124.4 (S)
TWR 123.2
SMC 121.9
ATIS 127.65
EMERG 121.5

**SIBU/SIBU (WBGS)
RWY 13
(VOR/DME)**

KALAX 1E MEGOX 1E LADEV 1E
ISGOT 1E TULMA 1E TAMIG 1E
APPAD 1E



**KALAX ONE ECHO ARRIVAL
ISGOT ONE ECHO ARRIVAL
MEGOX ONE ECHO ARRIVAL
TULMA ONE ECHO ARRIVAL**

KALAX ONE ECHO ARRIVAL

- FROM KALAX TRACK ON RDL 276 VSI VOR INBOUND
- AT 19.5 DME VSI TURN LEFT TRACK 025°
- ON CROSSING RDL 294, TURN RIGHT, TRACK 084°
- TO INTERCEPT LLZ FOR ILS APPROACH OR RDL 309 FOR VOR/DME APPROACH

ISGOT ONE ECHO ARRIVAL

- FROM ISGOT TRACK ON RDL 265 VSI VOR INBOUND
- AT 21 DME VSI TURN LEFT TRACK 025°
- ON CROSSING RDL 294, TURN RIGHT, TRACK 084°
- TO INTERCEPT LLZ FOR ILS APPROACH OR RDL 309 FOR VOR/DME APPROACH

MEGOX ONE ECHO ARRIVAL / FROM RULIN HOLD

- FROM MEGOX OR RULIN TRACK ON RDL 245 VSI VOR INBOUND
- AT 16 DME VSI TURN LEFT TRACK 347°
- ON CROSSING RDL 294, TURN RIGHT, TRACK 084°
- TO INTERCEPT LLZ FOR ILS APPROACH OR RDL 309 FOR VOR/DME APPROACH

TULMA ONE ECHO ARRIVAL

- FROM TULMA TRACK ON RDL 225 VSI VOR INBOUND
- AT 17.5 DME VSI TURN LEFT TRACK 347°
- ON CROSSING RDL 294, TURN RIGHT, TRACK 084°
- RDL 309 FOR VOR/DME APPROACH

**STAR RWY 13
- VOR/DME**

**LADEV ONE ECHO ARRIVAL
TAMIG ONE ECHO ARRIVAL
APPAD ONE ECHO ARRIVAL**

LADEV ONE ECHO ARRIVAL

- FROM LADEV TRACK ON R-008 VSI VOR INBOUND
- AT 16 DME VSI TURN RIGHT TRACK 265°
- ON CROSSING RDL 325, TURN LEFT, TRACK 174°
- TO INTERCEPT LLZ FOR ILS APPROACH OR RDL 309 FOR VOR/DME APPROACH

TAMIG ONE ECHO ARRIVAL / FROM IBVOX HOLD

- FROM TAMIG OR IBVOX TRACK ON RDL 048 VSI VOR INBOUND
- AT 12 DME VSI TURN RIGHT TRACK 290°
- ON CROSSING RDL 325, TURN LEFT, TRACK 174°
- TO INTERCEPT LLZ FOR ILS APPROACH OR RDL 309 FOR VOR/DME APPROACH

APPAD ONE ECHO ARRIVAL

- FROM APPAD TRACK ON RDL 068 VSI VOR INBOUND
- AT 16 DME VSI TURN RIGHT TRACK 290°
- ON CROSSING RDL 325, TURN LEFT, TRACK 174°
- TO INTERCEPT LLZ FOR ILS APPROACH OR RDL 309 FOR VOR/DME APPROACH

CHANGES : UPDATING THE FORMAT CHART