

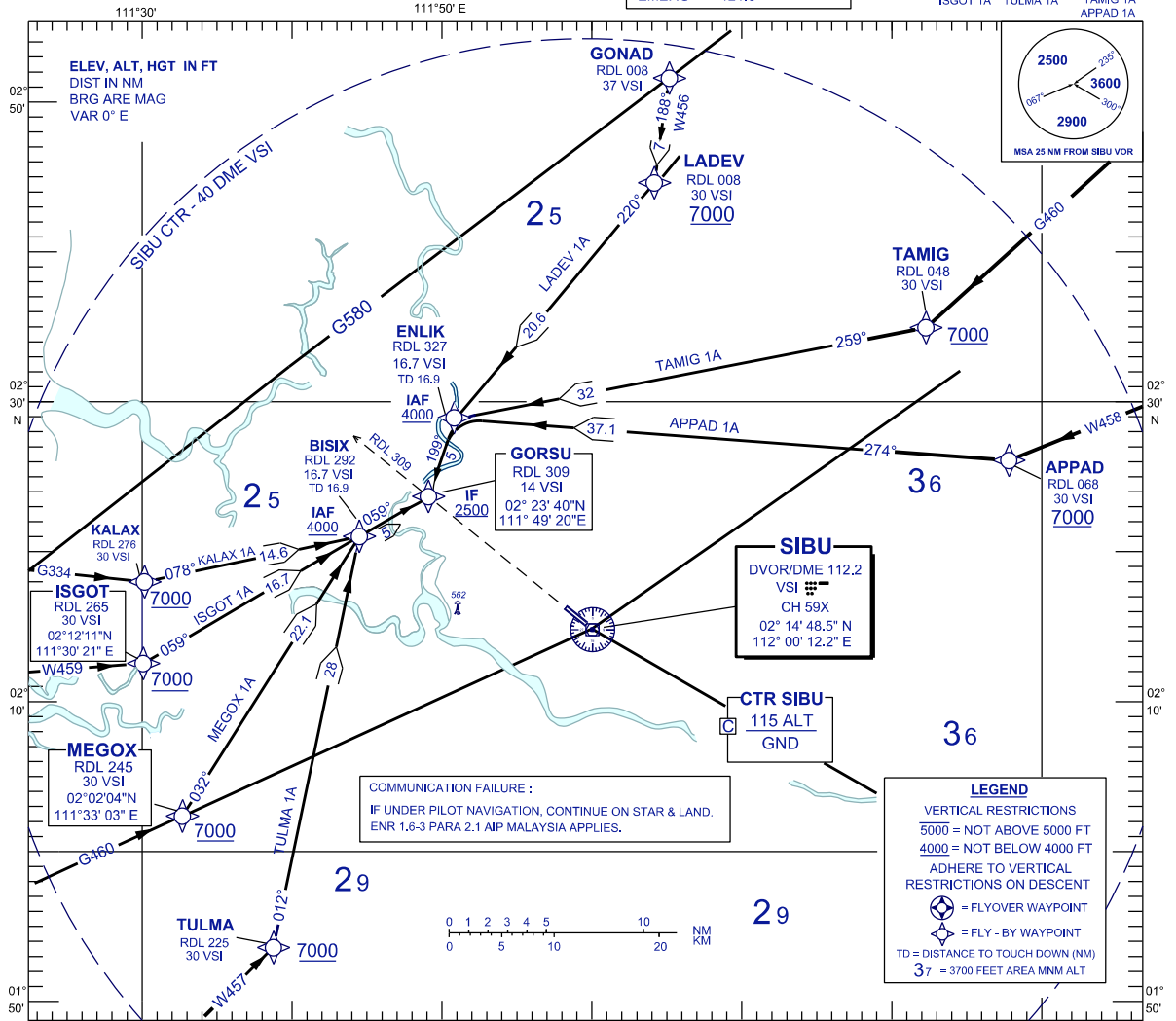
**STANDARD ARRIVAL CHART
INSTRUMENT (STAR) - ICAO**

TRANSITION ALTITUDE
11 000 FT

APP	122.6(P), 124.4 (S)
TWR	123.2
SMC	121.9
ATIS	127.65
EMERG	121.5

**SIBU/SIBU (WBGS)
RWY 13**
RNAV (VOR/DME)

KALAX 1A MEGOX 1A LADEV 1A
ISGOT 1A TULMA 1A TAMIG 1A
APPAD 1A



KALAX ONE ALPHA ARRIVAL ISGOT ONE ALPHA ARRIVAL MEGOX ONE ALPHA ARRIVAL TULMA ONE ALPHA ARRIVAL	STAR RWY 13 - RNAV	LADEV ONE ALPHA ARRIVAL TAMIG ONE ALPHA ARRIVAL APPAD ONE ALPHA ARRIVAL
<p>KALAX ONE ALPHA ARRIVAL</p> <ul style="list-style-type: none"> FROM KALAX TRACK 078° TO BISIX, THEN TO GORSU FROM GORSU MAKE STRAIGHT-IN ILS OR LOCALIZER/DME OR VOR/DME APPROACH <p>ISGOT ONE ALPHA ARRIVAL</p> <ul style="list-style-type: none"> FROM ISGOT TRACK 059° TO BISIX, THEN TO GORSU FROM GORSU MAKE STRAIGHT-IN ILS OR LOCALIZER/DME OR VOR/DME APPROACH <p>MEGOX ONE ALPHA ARRIVAL</p> <ul style="list-style-type: none"> FROM MEGOX TRACK 032° TO BISIX, THEN TO GORSU FROM GORSU MAKE STRAIGHT-IN ILS OR LOCALIZER/DME OR VOR/DME APPROACH <p>TULMA ONE ALPHA ARRIVAL</p> <ul style="list-style-type: none"> FROM TULMA TRACK 012° TO BISIX, THEN TO GORSU FROM GORSU MAKE STRAIGHT-IN ILS OR LOCALIZER/DME OR VOR/DME APPROACH 	<p>LADEV ONE ALPHA ARRIVAL</p> <ul style="list-style-type: none"> FROM LADEV TRACK 220° TO ENLIK, THEN TO GORSU FROM GORSU MAKE STRAIGHT-IN ILS OR LOCALIZER/DME OR VOR/DME APPROACH <p>TAMIG ONE ALPHA ARRIVAL</p> <ul style="list-style-type: none"> FROM TAMIG TRACK 259° TO ENLIK, THEN TO GORSU FROM GORSU MAKE STRAIGHT-IN ILS OR LOCALIZER/DME OR VOR/DME APPROACH <p>APPAD ONE ALPHA ARRIVAL</p> <ul style="list-style-type: none"> FROM APPAD TRACK 274° TO ENLIK, THEN TO GORSU FROM GORSU MAKE STRAIGHT-IN ILS OR LOCALIZER/DME OR VOR/DME APPROACH 	

CHANGES : UPDATING THE FORMAT CHART