

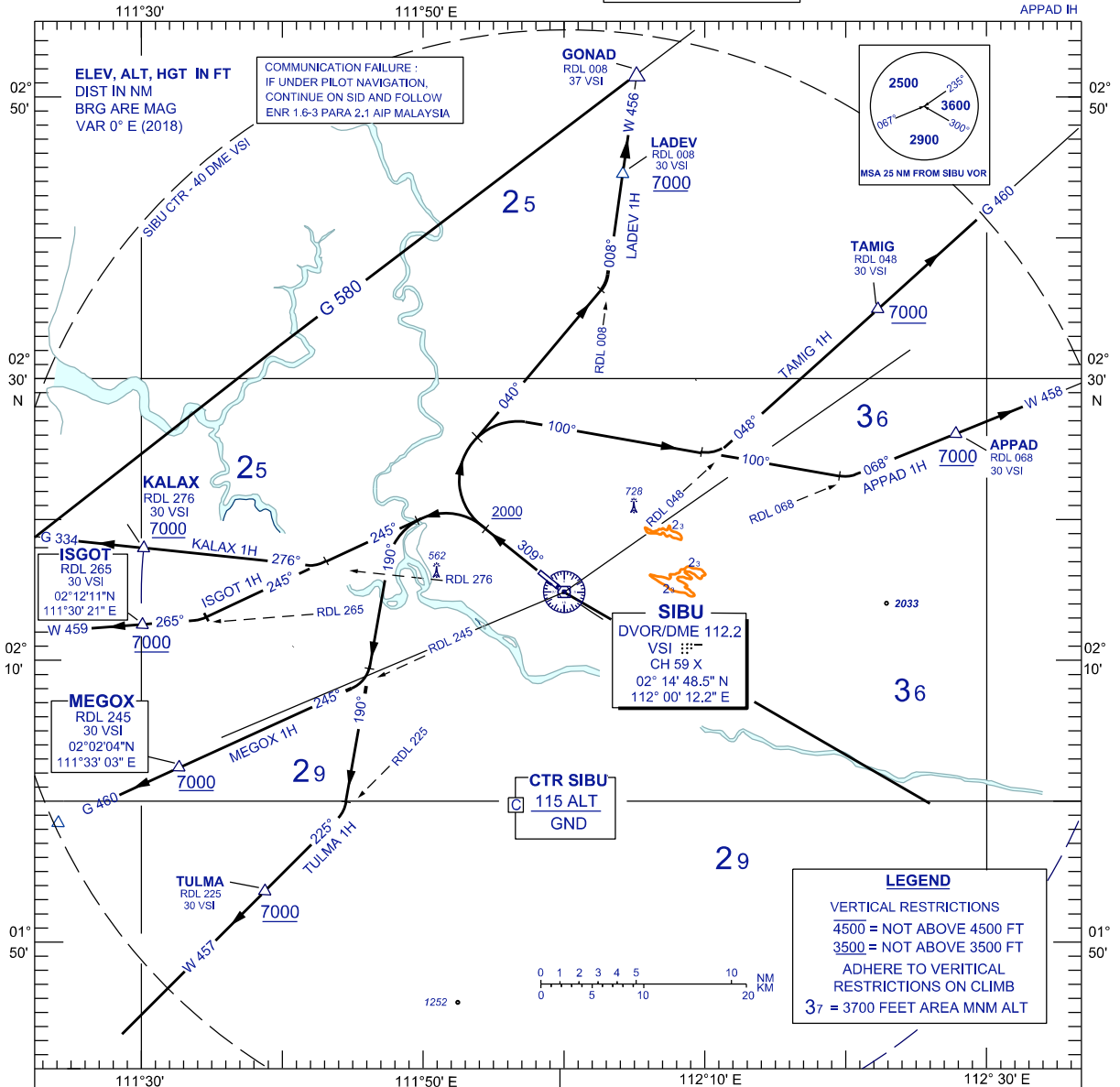
**STANDARD DEPARTURE CHART
INSTRUMENT (SID) - ICAO**

TRANSITION ALTITUDE
11 000 FT

APP	122.6(P), 124.4 (S)
TWR	123.2
SMC	121.9
ATIS	127.65
EMERG	121.5

**SIBU/SIBU (WBGS)
RWY 31**

KALAX 1H	MEGOX 1H	LADEV 1H
ISGOT 1H	TULMA 1H	TAMIG 1H
		APPAD 1H



**LADEV ONE HOTEL DEPARTURE
TAMIG ONE HOTEL DEPARTURE
APPAD ONE HOTEL DEPARTURE**

RWY 31 (RIGHT TURN)

CLIMB ON TRACK 309°. AT/ABOVE 2000 FT TURN RIGHT,

FOR LADEV 1H

TRACK 040°
INTERCEPT RDL 008 VSI VOR OUTBOUND TO LADEV

FOR TAMIG 1H

TRACK 100°
INTERCEPT RDL 048 VSI VOR OUTBOUND TO TAMIG

FOR APPAD 1H

TRACK 100°
INTERCEPT RDL 068 VSI VOR OUTBOUND TO APPAD

**KALAX ONE HOTEL DEPARTURE
ISGOT ONE HOTEL DEPARTURE
MEGOX ONE HOTEL DEPARTURE
TULMA ONE HOTEL DEPARTURE**

RWY 31 (LEFT TURN)

CLIMB ON TRACK 309°. AT/ABOVE 2000 FT TURN LEFT,

FOR KALAX 1H

TRACK 245°
INTERCEPT RDL 276 VSI VOR OUTBOUND TO KALAX

FOR ISGOT 1H

TRACK 245°
INTERCEPT RDL 265 VSI VOR OUTBOUND TO ISGOT

FOR MEGOX 1H

TRACK 190°
INTERCEPT RDL 245 VSI VOR OUTBOUND TO MEGOX

FOR TULMA 1H

TRACK 190°
INTERCEPT RDL 225 VSI VOR OUTBOUND TO TULMA

CHANGES : UPDATING THE CHART FORMAT