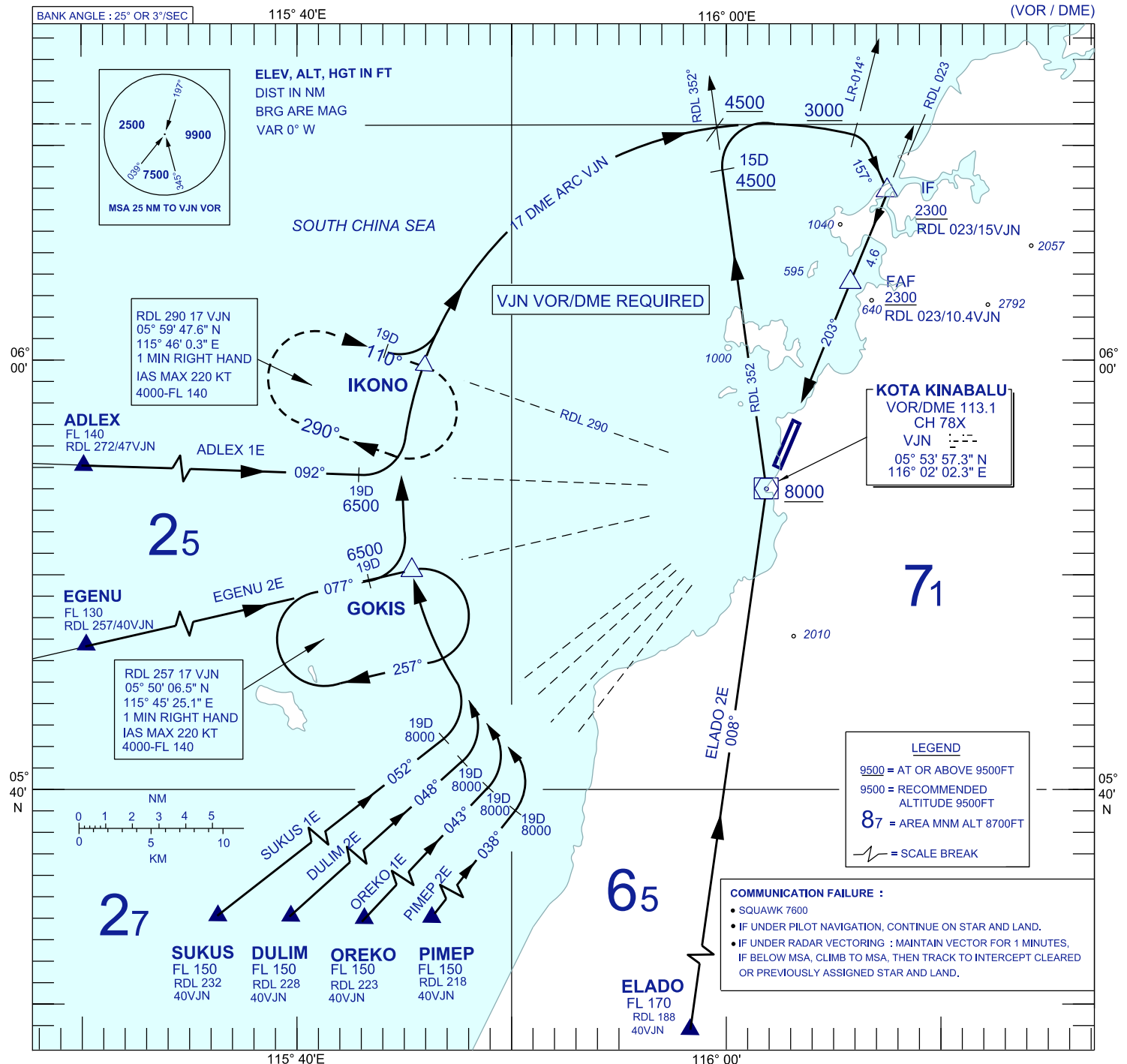


**STANDARD ARRIVAL CHART
INSTRUMENT (STAR) - ICAO**

TRANSITION ALTITUDE
11,000 FT

APP	119.1
TWR	118.3
GND	121.6
ATIS	127.4

**KOTA KINABALU/KOTA KINABALU
(WBKK)
RWY 20**



CHANGES : UPDATING THE CHART FORMAT