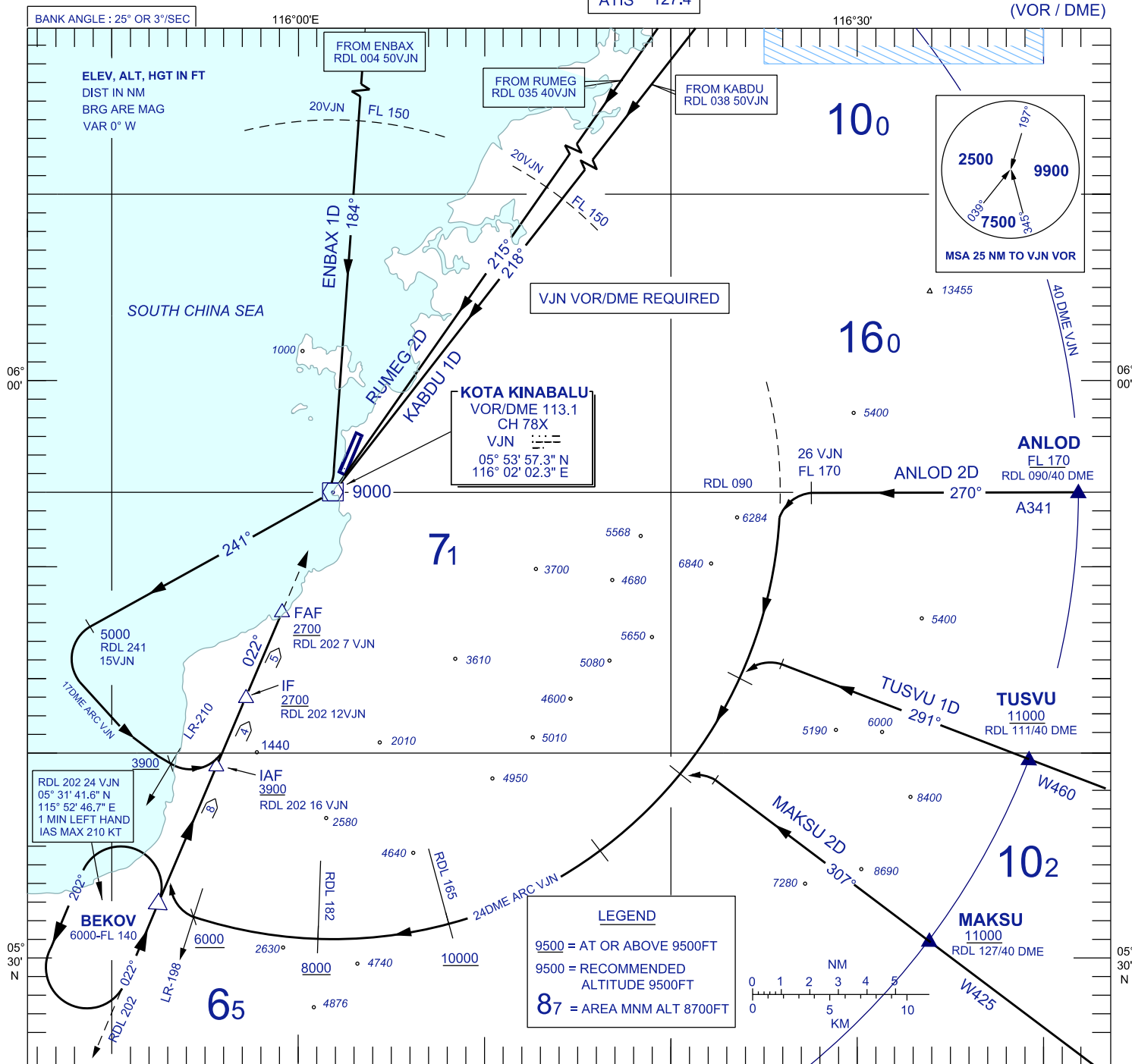


**STANDARD ARRIVAL CHART
INSTRUMENT (STAR) - ICAO**

**KOTA KINABALU/KOTA KINABALU
(WBKK)
RWY 02
(VOR / DME)**

TRANSITION ALTITUDE
11,000 FT

APP 119.1
TWR 118.3
GND 121.6
ATIS 127.4



COMMUNICATION FAILURE :

- SQUAWK 7600
- IF UNDER PILOT NAVIGATION, CONTINUE ON STAR AND LAND.
- IF UNDER RADAR VECTORED : MAINTAIN VECTOR FOR 1 MINUTE, IF BELOW MSA, CLIMB TO MSA, THEN TRACK TO INTERCEPT CLEARED OR PREVIOUSLY ASSIGNED STAR AND LAND.

CHANGES : UPDATING THE CHART FORMAT