

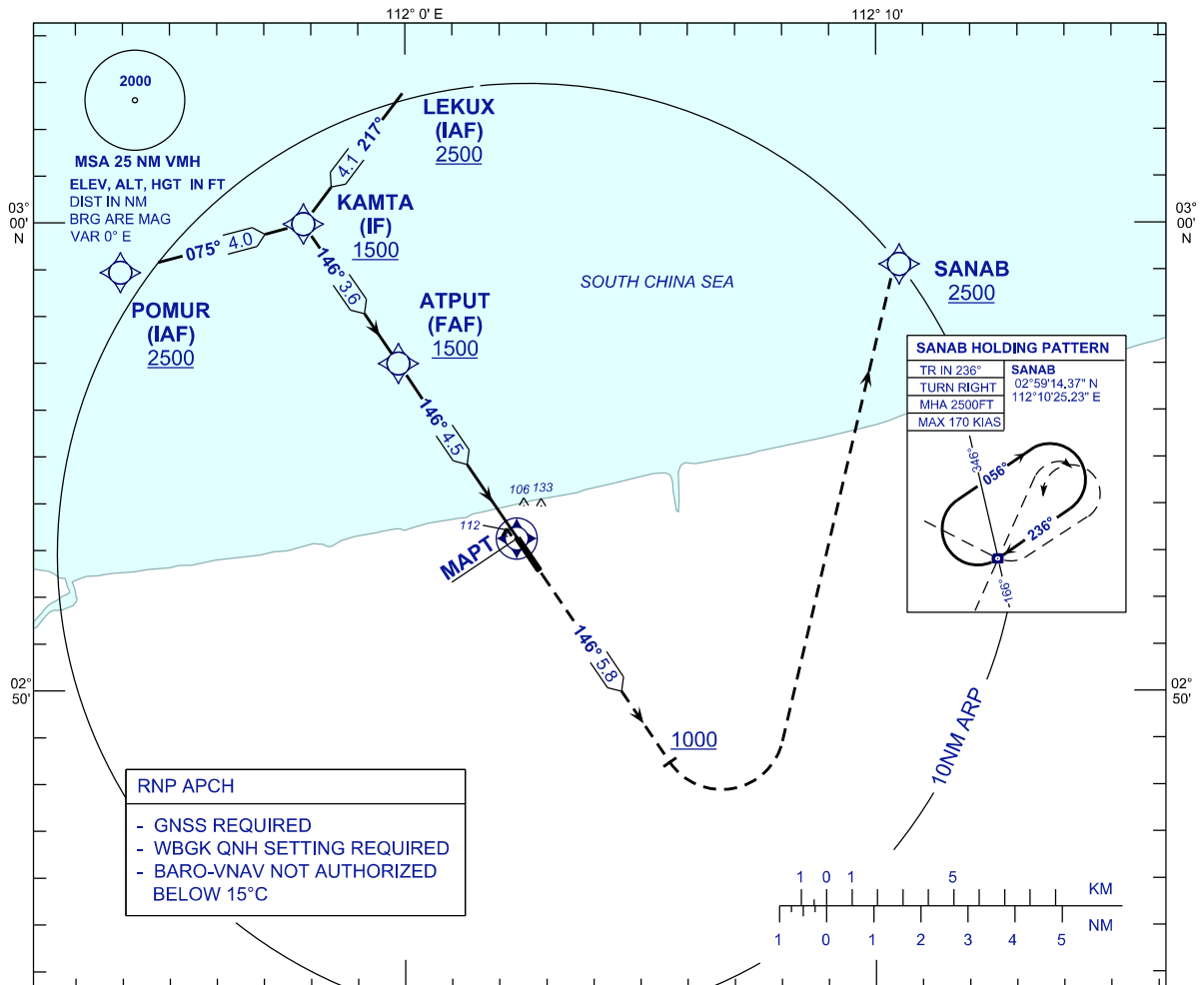
**INSTRUMENT
APPROACH
CHART - ICAO**

AERODROME ELEV 20 FT
HEIGHTS RELATED TO
THR RWY 15 - ELEV 20 FT

TWR	118.300
SMC	118.075
ATIS	126.200

MUKAH/MUKAH(WBGK)

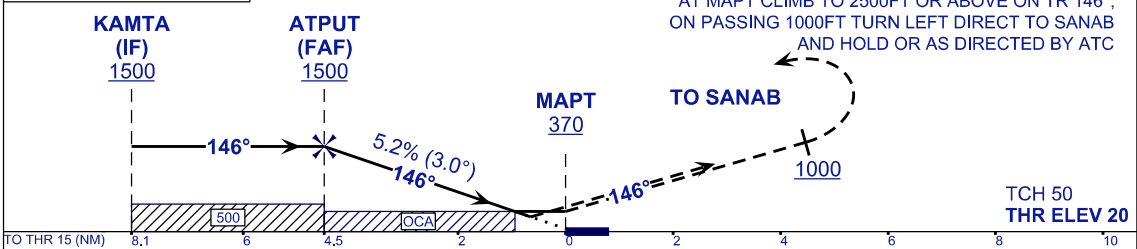
RNP Z RWY 15



RNP APCH

- GNSS REQUIRED
- WBGK QNH SETTING REQUIRED
- BARO-VNAV NOT AUTHORIZED BELOW 15°C

TRANSITION LEVEL FL 130
TRANSITION ALT 11 000



OCA /OCH	A	B
LNAV	370 (350)	
LNAV/VNAV	267 (247)	277 (257)
CIRCLING	550(530)/1.0	550(530)/1.5

DIST THR/RWY15	4.5	3.5	2.5	1.5	0.5
ALTITUDE (FT)	1500	1185	867	548	230

GROUND SPEED (GS)	KT	80	100	120	140	160	180
FAP - RWY15 (4.5 NM)	MIN:SEC	3:22	2:42	2:15	1:55	1:41	1:30
RATE OF DESCEND (318.4 FT/NM)	FT/MIN	420	530	640	740	850	960

CHANGES : ADD MSA CENTER POINT
SANAB HOLDING PATTERN
AT PROFILE VIEW, READ KTS TO KT