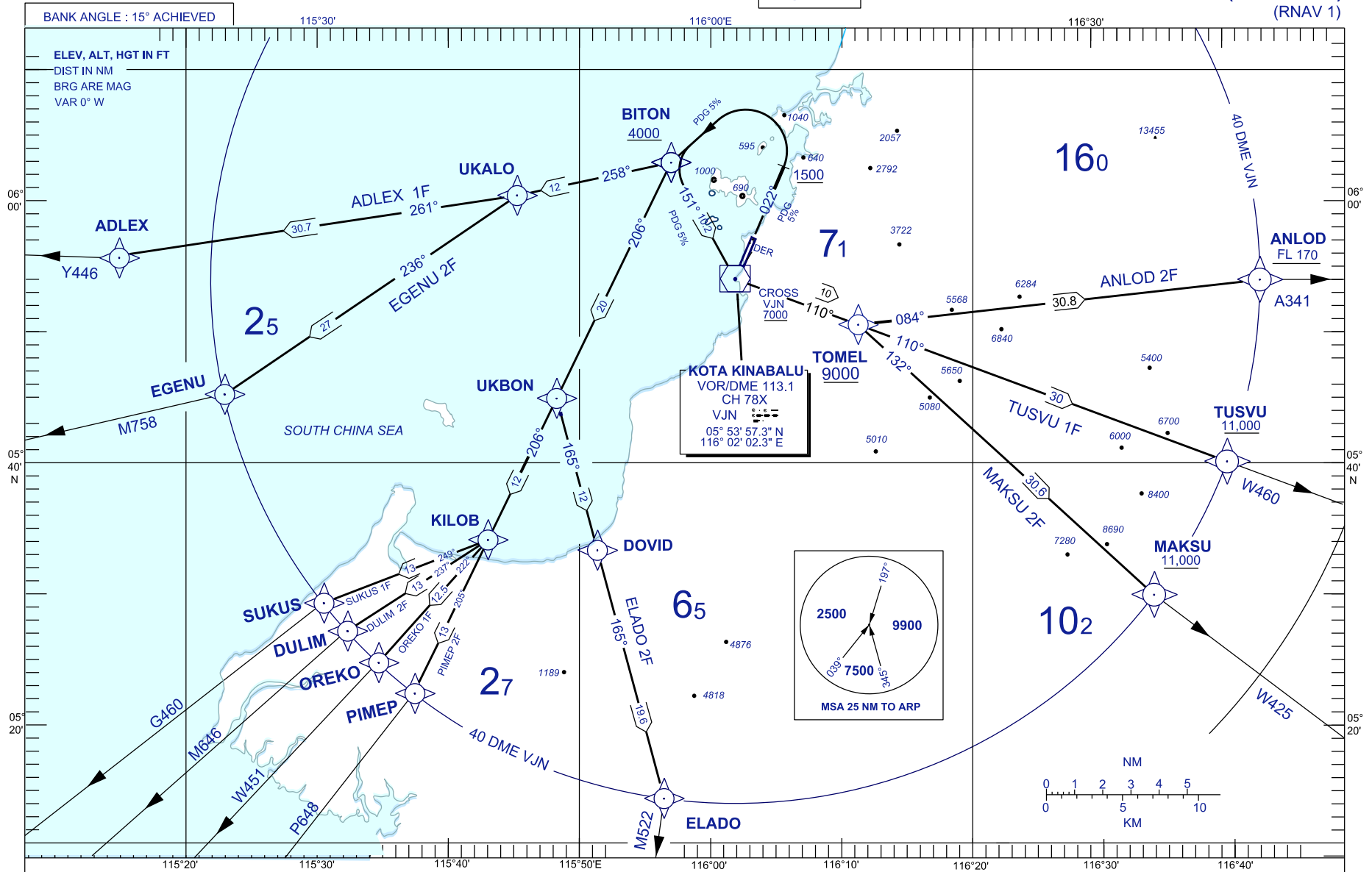


**STANDARD DEPARTURE CHART
INSTRUMENT (SID) - ICAO**

TRANSITION ALTITUDE
11,000 FT

APP 119.1
TWR 118.3
GND 121.6
ATIS 127.4

**KOTA KINABALU/KOTA KINABALU (WBKK)
RWY 02
DEPARTURES (LEFT TURN)
(RNAV 1)**



COMMUNICATION FAILURE :

- SQUAWK 7600
- IF UNDER PILOT NAVIGATION, MAINTAIN LAST ASSIGNED LEVEL FOR 3 MINUTES. IF NO ONWARD CLEARANCE IS RECEIVED, SUBSEQUENTLY CLIMB TO COMPLY WITH SID.
- IF BELOW MSA, CLIMB TO MSA, THEN TRACK TO INTERCEPT CLEARED OR PREVIOUSLY ASSIGNED SID TO DESTINATION.

NOTE:

UNLESS SPECIFIED BY TOWER, ALL IFR DEPARTURES TO CONTACT KINABALU RADAR 119.1 MHZ AFTER AIRBORNE.

LEGEND

9500 = AT OR ABOVE 9500FT
9500 = RECOMMENDED ALTITUDE 9500FT
87 = AREA MNM ALT 8700FT

SPEED (IAS) KT	120	140	160	180	200	230	265
5% ROC (FT/MIN)	608	709	811	911	1012	1165	1342
6% ROC (FT/MIN)	729	849	973	1094	1215	1397	1610
7% ROC (FT/MIN)	851	991	1136	1276	1418	1630	1878

CHANGES : UPDATING THE CHART FORMAT