

STANDARD RADAR DEPARTURE - INSTRUMENT - ICAO

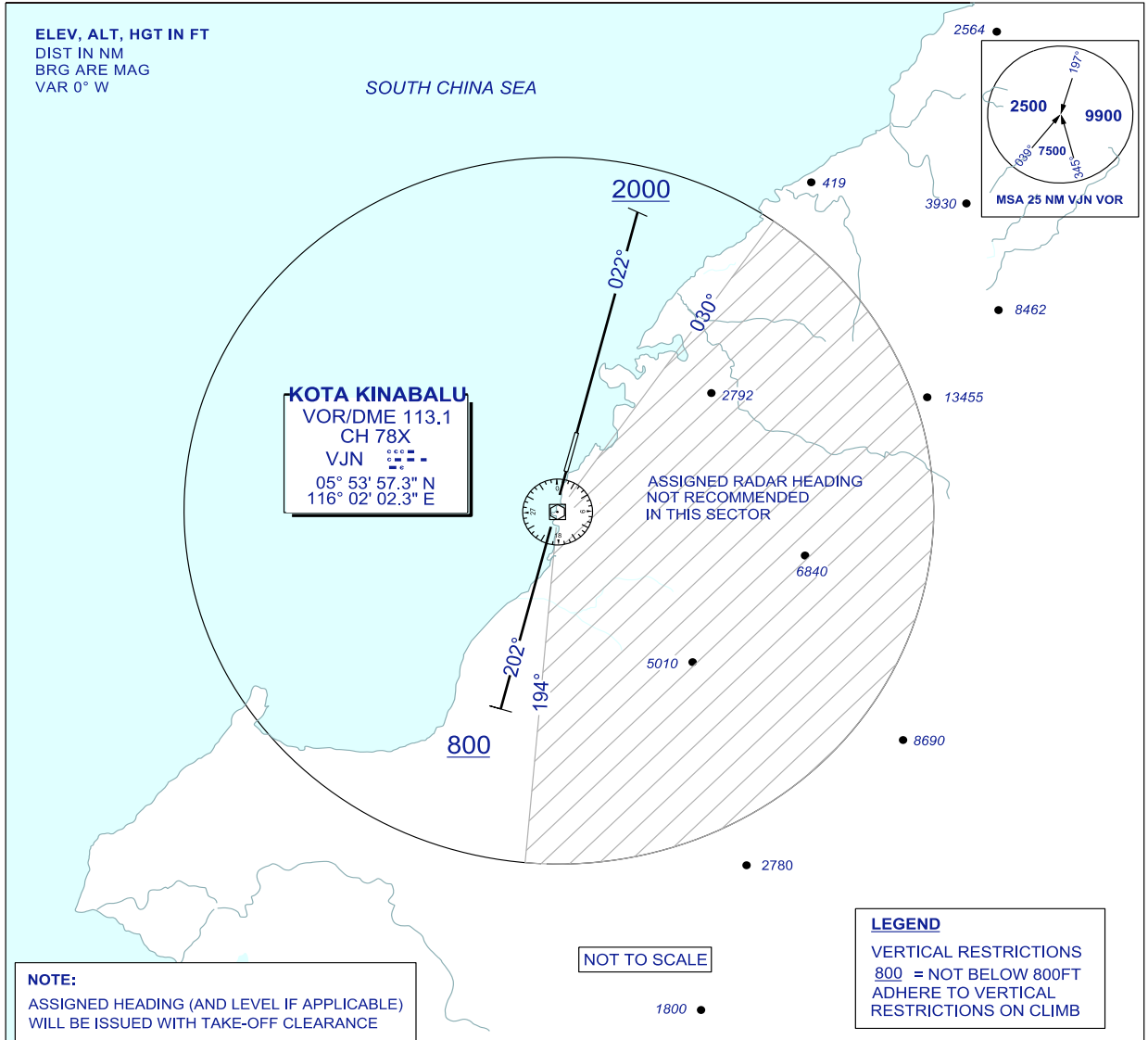
TRANSITION ALTITUDE
11000 FT

APP 119.1
TWR 118.3
GND 121.6
ATIS 127.4

KOTA KINABALU/KOTA KINABALU (WBKK)

RWY 02 / 20

RADAR TWO DEPARTURE



NOTE:
ASSIGNED HEADING (AND LEVEL IF APPLICABLE) WILL BE ISSUED WITH TAKE-OFF CLEARANCE

NOT TO SCALE

LEGEND
VERTICAL RESTRICTIONS
800 = NOT BELOW 800FT
ADHERE TO VERTICAL RESTRICTIONS ON CLIMB

RWY 02

TRACK 022°
AT 2000FT TURN TO ASSIGNED HEADING
PDG 5.0% UNTIL PASSING 2000 FT

RWY 20

TRACK 202°
AT 800FT TURN TO ASSIGNED HEADING

ON FIRST CONTACT WITH KINABALU DIRECTOR PILOT TO ADVISE:
- DIRECTION OF TURN AND ASSIGNED HEADING
- LEVEL PASSING TO NEAREST 100FT ASSIGNED LEVEL

RATE OF CLIMB IN FT / MIN									
GROUND SPEED (KT)	90	120	150	180	210	240	270	300	330
GRADIENT (3.3%)	300	401	502	602	669	803	869	1002	1103
GRADIENT (5.0%)	462	608	760	911	1063	1215	1367	1519	1672

COMMUNICATIONS FAILURE :

IMMEDIATELY SQUAWK 7600
MAINTAIN ASSIGNED - CLIMB TO MSA OR LAST ASSIGNED LEVEL IF HIGHER
MAINTAIN MSA OR ASSIGNED LEVEL, AS APPLICABLE, FOR 2 MINUTES
THEN CLIMB TO FLIGHT PLANNED LEVEL AND INTERCEPT FLIGHT PLANNED TRACK
(AS AMENDED BY ATC, IF APPLICABLE)

CHANGES : UPDATING THE CHART FORMAT