

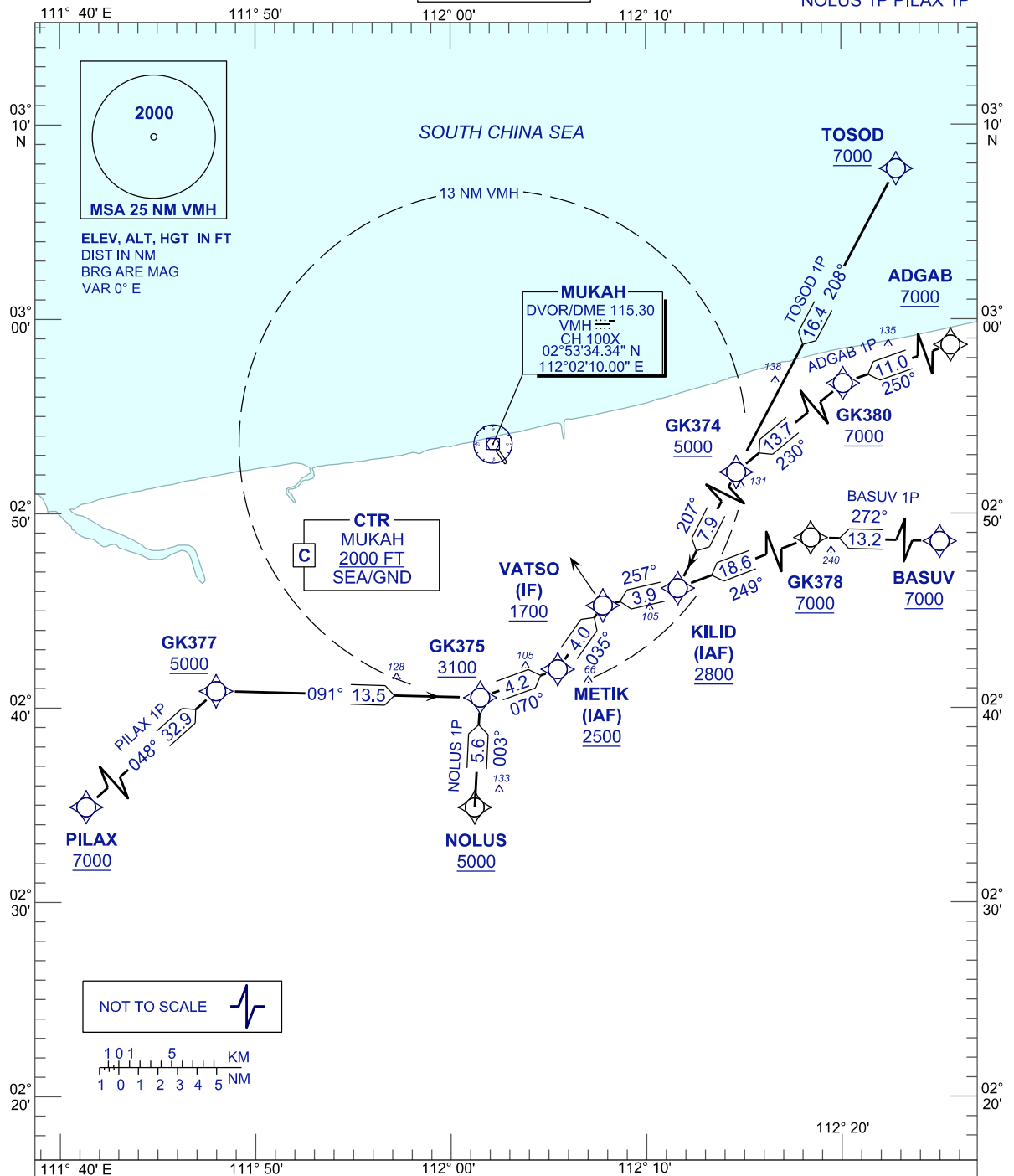
**STANDARD ARRIVAL CHART  
INSTRUMENT (STAR) - ICAO**

APP	122.6 (P)
TWR	124.4 (S)
	118.30 (P)
	118.075 (S)
ATIS	126.200

**MUKAH/MUKAH(WBGK)  
RNAV (GNSS) RWY 33**

TOSOD 1P ADGAB 1P BASUV 1P  
NOLUS 1P PILAX 1P

TRANSITION ALT 11 000FT



**COMMUNICATION FAILURE:**

- SQUAWK 7600
- IF UNDER PILOT NAVIGATION, MAINTAIN LAST ASSIGNED LEVEL FOR 3 MINUTES, IF NO ONWARDS CLEARANCE IS RECEIVED SUBSEQUENTLY CLIMB/DESCEND TO COMPLY WITH STAR AND LAND
- IF UNDER RADAR VECTORED, MAINTAIN VECTOR FOR 1 MINUTE, IF BELOW MSA CLIMB TO MSA, THEN TRACK TO INTERCEPT CLEARED OR PREVIOUSLY ASSIGNED STAR AND LAND

CHANGES : ADD MSA CENTER POINT