

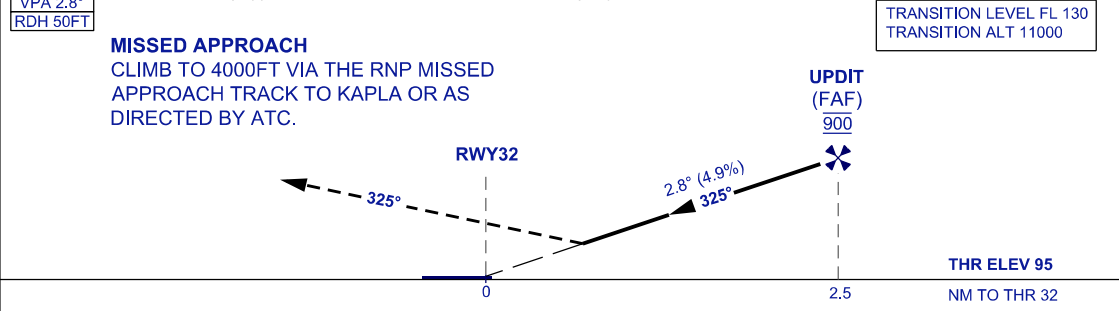
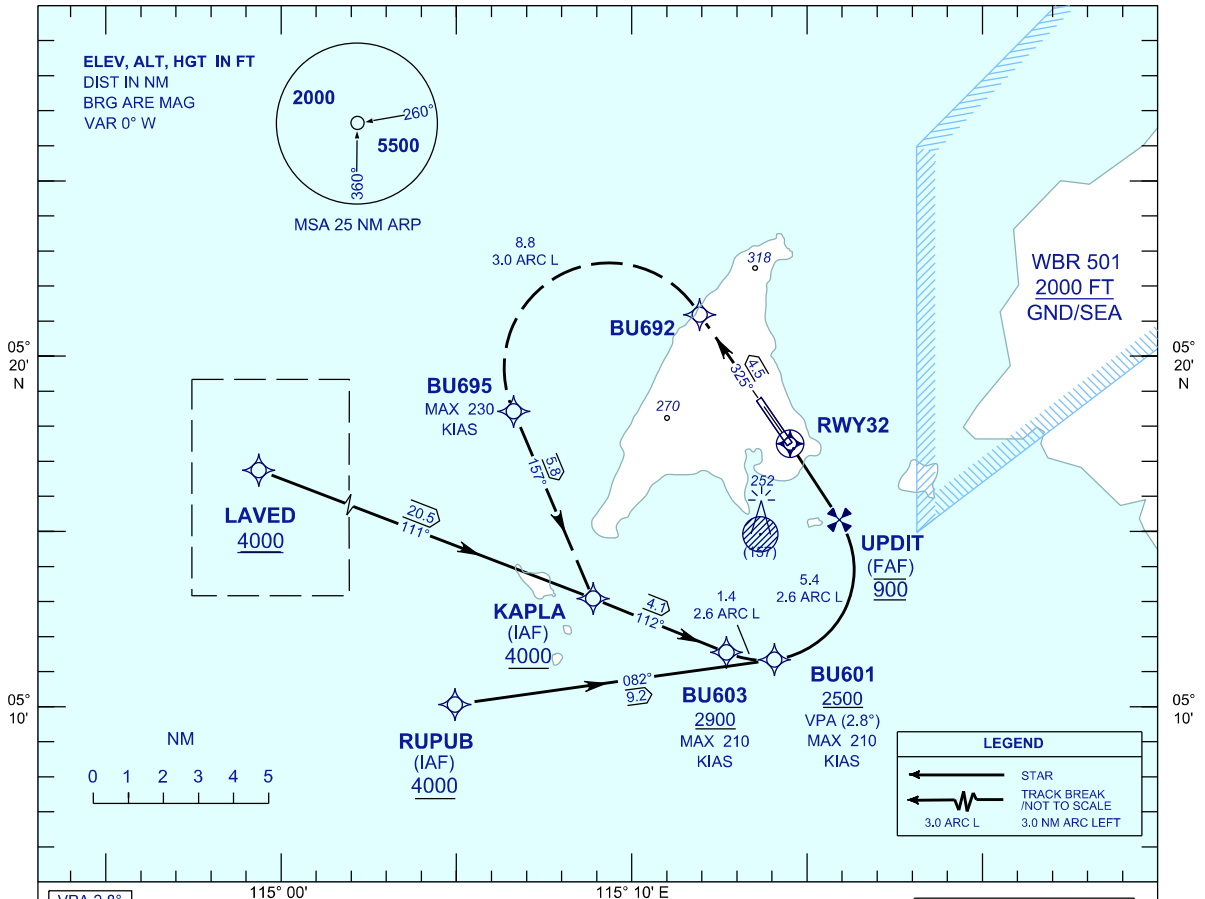
**INSTRUMENT
APPROACH
CHART - ICAO**

AERODROME ELEV 100 FT
HEIGHTS RELATED TO
THR RWY 32 - ELEV 95 FT

APP 119.70, 249.30
TWR 118.10, 238.10
SMC 118.35, 235.10
ATIS 126.85

**LABUAN/LABUAN
(WBKL)**

RNP Z RWY 32 (AR)



OCA/H	
ACFT CAT.	C D
RNP 0.3	511 (416)

GROUND SPEED - KT	70	90	100	120	140	160
RATE OF DESCENT (2.8°) (FT/MIN)	347	446	495	594	693	792

DISTANCE TO THRESHOLD (NM)	2.5	2	1
ALTITUDE (FT)	900	670	370

- 1. AUTHORIZATION REQUIRED
- 2. GNSS REQUIRED
- 3. RF REQUIRED
- 4. APPROACH NOT AUTHORIZED WHEN AIRPORT TEMPERATURE BELOW 17°C OR ABOVE 40°C
- 5. WBKL ALTIMETER SETTING REQUIRED.
- 6. PAPI AND VERTICAL PATH ANGLE NOT COINCIDENT
- 7. PROCEDURE REQUIRES RNP 1.0 IN FEEDER SEGMENTS.
- 8. PROCEDURE REQUIRES RNP 0.3 FROM IAF'S TO RWY
- 9. CLIMB GRADIENT OF 3.3% TO 4000FT REQUIRED TO REACH KAPLA
- 10. VSS DOES NOT TAKE INTO ACCOUNT TRANSIENT OBJECTS.

CHANGES : UPDATING THE CHART FORMAT.