

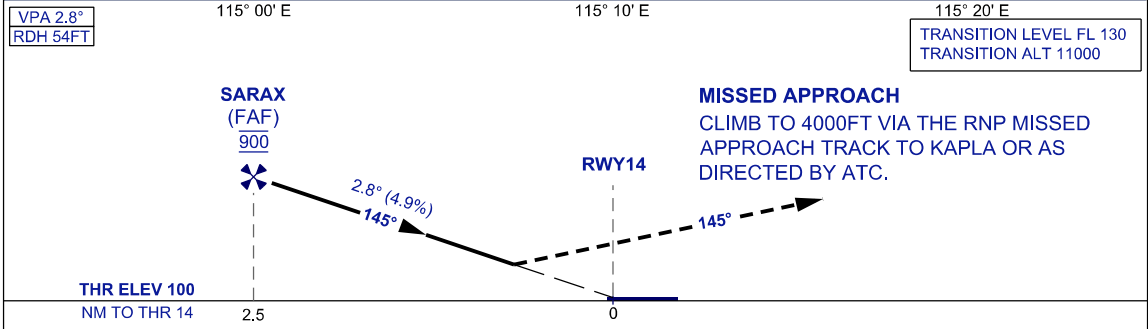
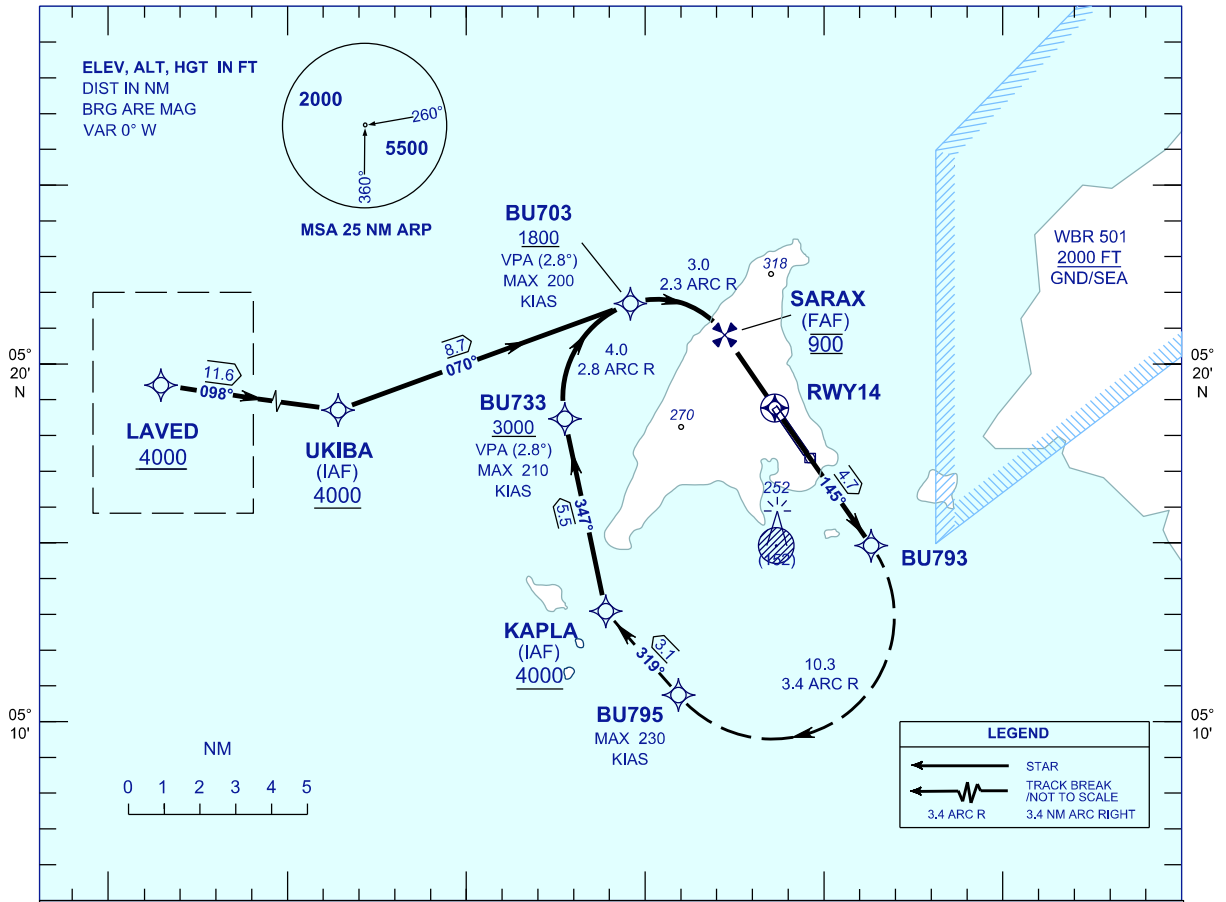
**INSTRUMENT
APPROACH
CHART - ICAO**

AERODROME ELEV 100 FT
HEIGHTS RELATED TO
THR RWY 14 - ELEV 100 FT

APP 119.70, 249.30
TWR 118.10, 238.10
SMC 118.35, 235.10
ATIS 126.85

**LABUAN/LABUAN
(WBKL)**

RNP Z RWY 14 (AR)



OCA/H	
ACFT CAT.	C D
RNP 0.3	515 (415)

GROUND SPEED - KT	70	90	100	120	140	160
RATE OF DESCENT (2.8°) (FT/MIN)	347	446	495	594	693	792

DISTANCE TO THRESHOLD (NM)	2.5	2	1
ALTITUDE (FT)	900	670	370

- 1. AUTHORIZATION REQUIRED**
- 2. GNSS REQUIRED**
- 3. RF REQUIRED**
4. APPROACH NOT AUTHORIZED WHEN AIRPORT TEMPERATURE BELOW 17°C OR ABOVE 40°C
5. WBKL ALTIMETER SETTING REQUIRED.
6. PAPI AND VERTICAL PATH ANGLE NOT COINCIDENT
7. PROCEDURE REQUIRES RNP 0.3 FROM IAF'S TO RWY
8. CLIMB GRADIENT OF 3.5% TO 4000FT REQUIRED TO REACH KAPLA

CHANGES : UPDATING THE CHART FORMAT.