

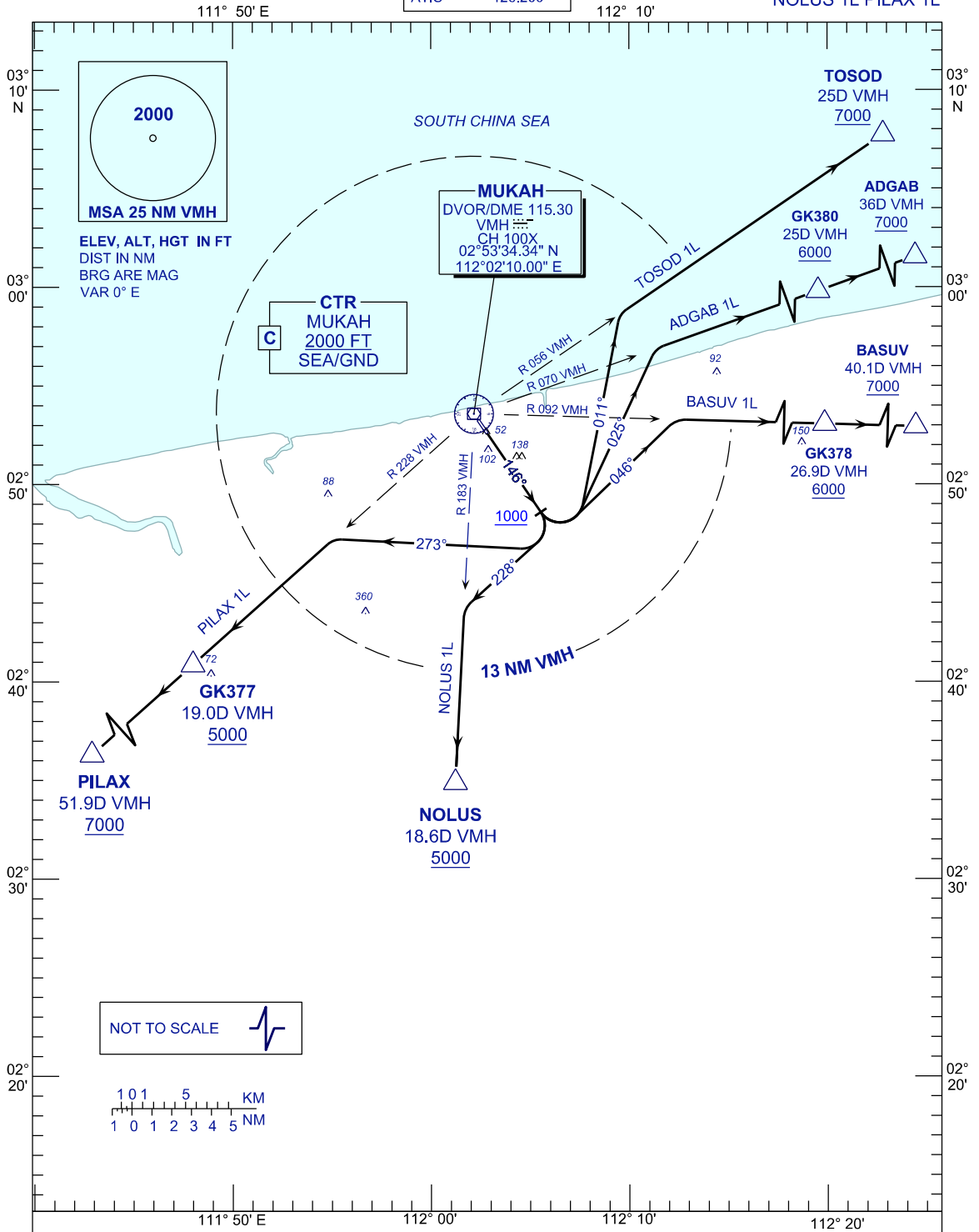
**STANDARD DEPARTURE CHART  
INSTRUMENT (SID) - ICAO**

**MUKAH/MUKAH(WBGK)  
RWY 15**

TRANSITION ALT 11 000FT

APP	122.6 (P)
TWR	118.30 (P)
	118.075 (S)
ATIS	126.200

TOSOD 1L ADGAB 1L BASUV 1L  
NOLUS 1L PILAX 1L



NOT TO SCALE

101 5 KM  
1 0 1 2 3 4 5 NM

**COMMUNICATION FAILURE:**  
SQUAWK 7600  
-IF UNDER PILOT NAVIGATION, MAINTAIN LAST ASSIGNED LEVEL FOR 3 MINUTES, IF NO ONWARDS CLEARANCE IS RECEIVED SUBSEQUENTLY CLIMB TO COMPLY WITH SID TO DESTINATION  
-IF UNDER RADAR VECTORED, MAINTAIN VECTOR FOR 1 MINUTE, IF BELOW MSA CLIMB TO MSA, THEN TRACK TO INTERCEPT CLEARED OR PREVIOUSLY ASSIGNED SID TO DESTINATION.

CHANGES : ADD MSA CENTER POINT