

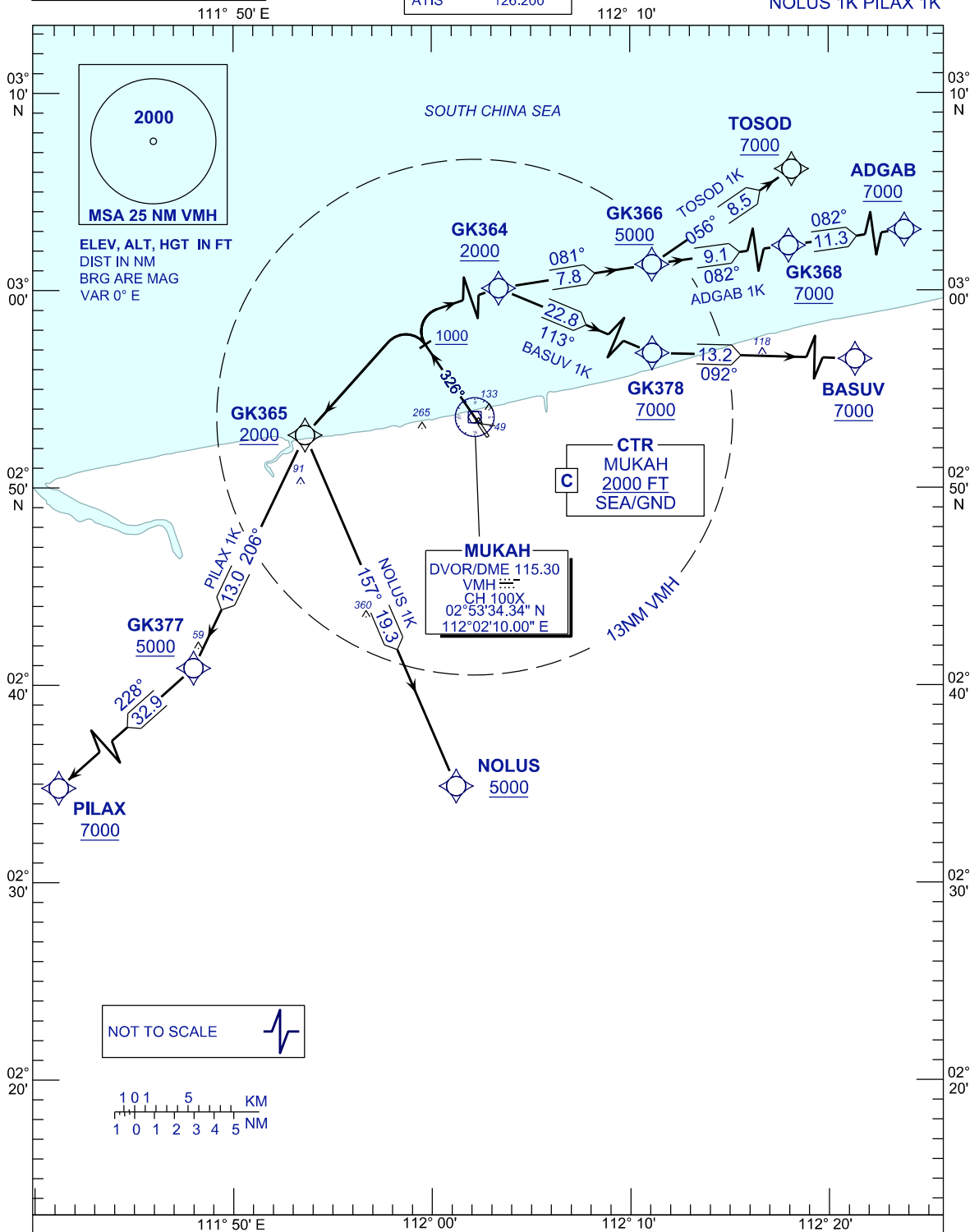
**STANDARD DEPARTURE CHART  
INSTRUMENT (SID) - ICAO**

APP	122.6 (P)
	124.4 (S)
TWR	118.30 (P)
	118.075 (S)
ATIS	126.200

**MUKAH/MUKAH(WBGK)  
RNAV (GNSS) RWY 33**

TOSOD 1K ADGAB 1K BASUV 1K  
NOLUS 1K PILAX 1K

TRANSITION ALT 11 000FT



**COMMUNICATION FAILURE:**

- SQUAWK 7600
- IF UNDER PILOT NAVIGATION, MAINTAIN LAST ASSIGNED LEVEL FOR 3 MINUTES, IF NO ONWARDS CLEARANCE IS RECEIVED SUBSEQUENTLY CLIMB TO COMPLY WITH SID TO DESTINATION
- IF UNDER RADAR VECTORED, MAINTAIN VECTOR FOR 1 MINUTE, IF BELOW MSA CLIMB TO MSA, THEN TRACK TO INTERCEPT CLEARED OR PREVIOUSLY ASSIGNED SID TO DESTINATION.

CHANGES : ADD MSA CENTER POINT