

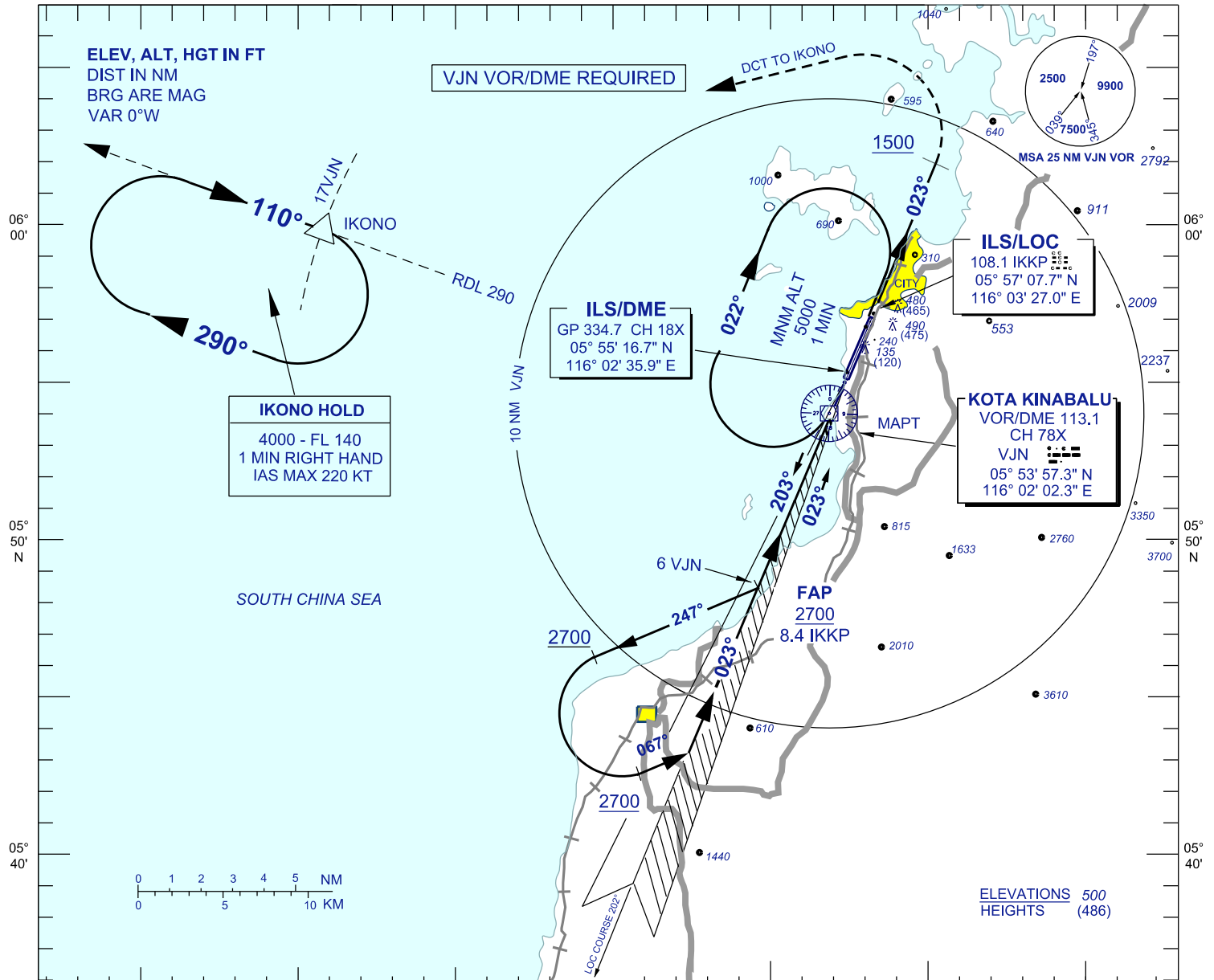
**INSTRUMENT
APPROACH
CHART - ICAO**

AERODROME ELEV 14 FT
HEIGHTS RELATED TO
THR RWY 02 - ELEV 14 FT

APP 119.1
TWR 118.3
GND 121.6
ATIS 127.4

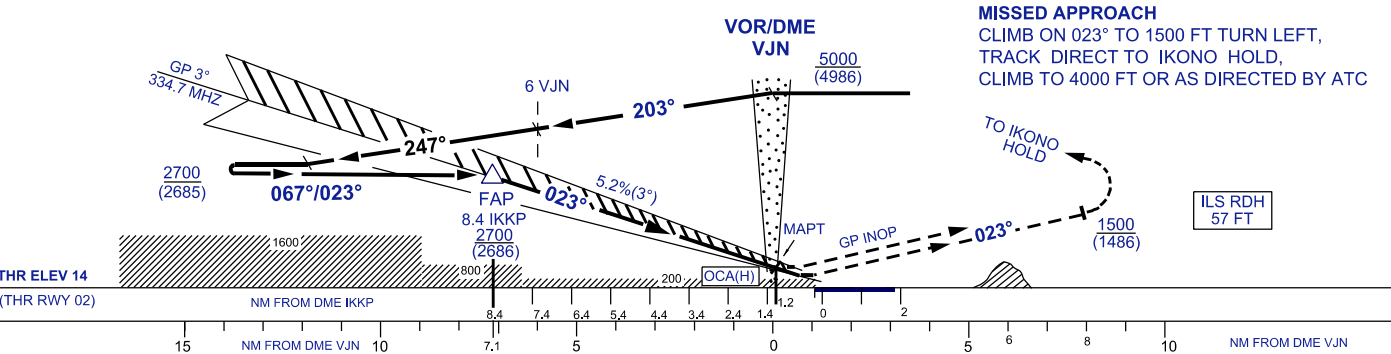
**KOTA KINABALU/
KOTA KINABALU (WBKK)
RWY 02**

ILS Y
(FROM OVERHEAD VOR/DME VJN)



USE QNH
TRANSITION LEVEL FL 130
TRANSITION ALT 11000

DIST BY DME (NM)	8.4	7.4	6.4	5.4	4.4	3.4	2.4	1.4	MAPT / 1.2
ALT 3° APCH PATH (FT)	2700(2686)	2382(2368)	2064(2050)	1746(1732)	1428(1414)	1110(1096)	792(778)	474(460)	405(391)



OCA (H) FT	A	B	C	D
STRAIGHT-IN APPROACH	280(266)	292(278)	300(286)	320(306)
LOC / DME	405(391)/1.2 IKKP			
CIRCLING/MNM VIS(NM)	850(836) /1.0	850(836) /1.5	1300(1286) /2.0	1600(1586) /2.5

GROUND SPEED(KT)	70	90	120	150	180	
FAP - MAPT = 7.2NM	MIN : SEC	6:09	4:48	3:36	2:53	2:24
RATE OF DESCENT (3°)	FT/ MIN	375	482	643	804	964

CHANGES : UPDATING THE CHART FORMAT