

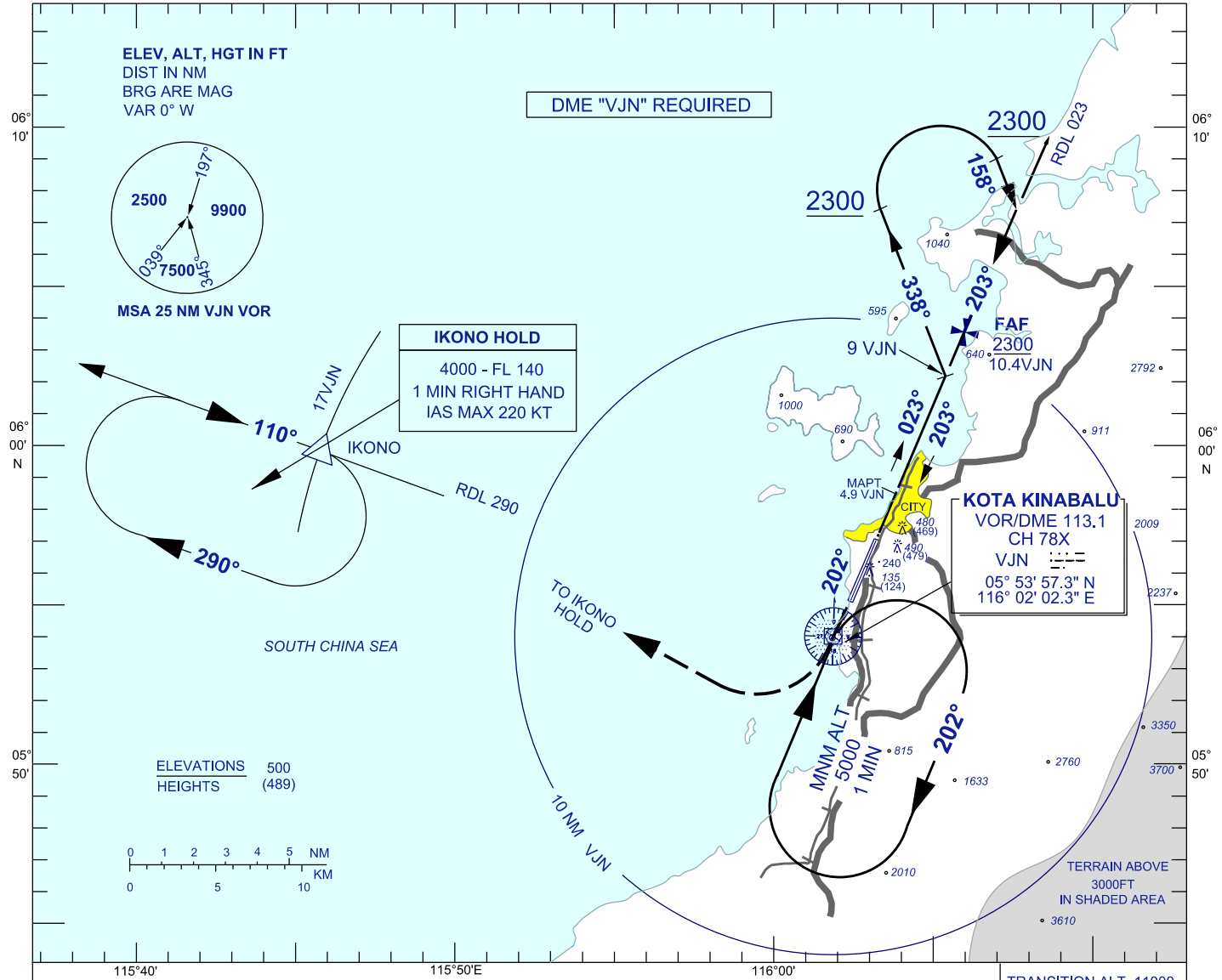
**INSTRUMENT  
APPROACH  
CHART - ICAO**

**AERODROME ELEV 14 FT**  
HEIGHTS RELATED TO  
THR RWY 20 - ELEV 11 FT

APP	119.1
TWR	118.3
GND	121.6
ATIS	127.4

**KOTA KINABALU/  
KOTA KINABALU (WBKK)  
RWY 20**

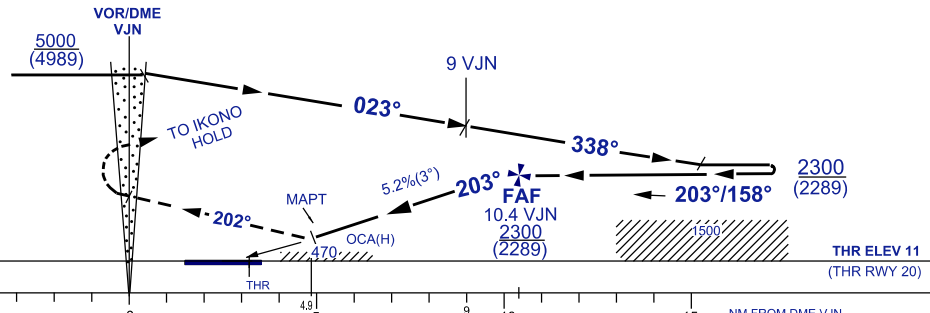
VOR Y



DIST BY DME (VJN)	10.4	9.4	8.4	7.4	6.4	5.4	MAPT / 4.9
ALT 3° APCH PATH (FT)	2300(2289)	1982(1971)	1664(1653)	1346(1335)	1028(1017)	710(699)	630(619)

**MISSED APPROACH**

CLIMB ON TRACK 202°, ON PASSING VJN VOR,  
TURN RIGHT, TRACK TO IKONO HOLD,  
CLIMB TO 4000 FT, OR AS DIRECTED BY ATC



OCA (H) FT	A	B	C	D
STRAIGHT-IN APPROACH	VOR / DME 630 (619) / 4.9 VJN			
CIRCLING/MNM VIS(NM)	850 (839) / 1.0	850 (839) / 1.5	1300 (1289) / 2.0	1600 (1589) / 2.5

GROUND SPEED(KT)	70	90	120	150	180	
FAF - MAPT = 5.5 NM	MIN : SEC	4:42	3:39	2:45	2:12	1:50
RATE OF DESCENT (3°)	FT/ MIN	371	476	634	793	951

CHANGES : UPDATING THE CHART FORMAT