

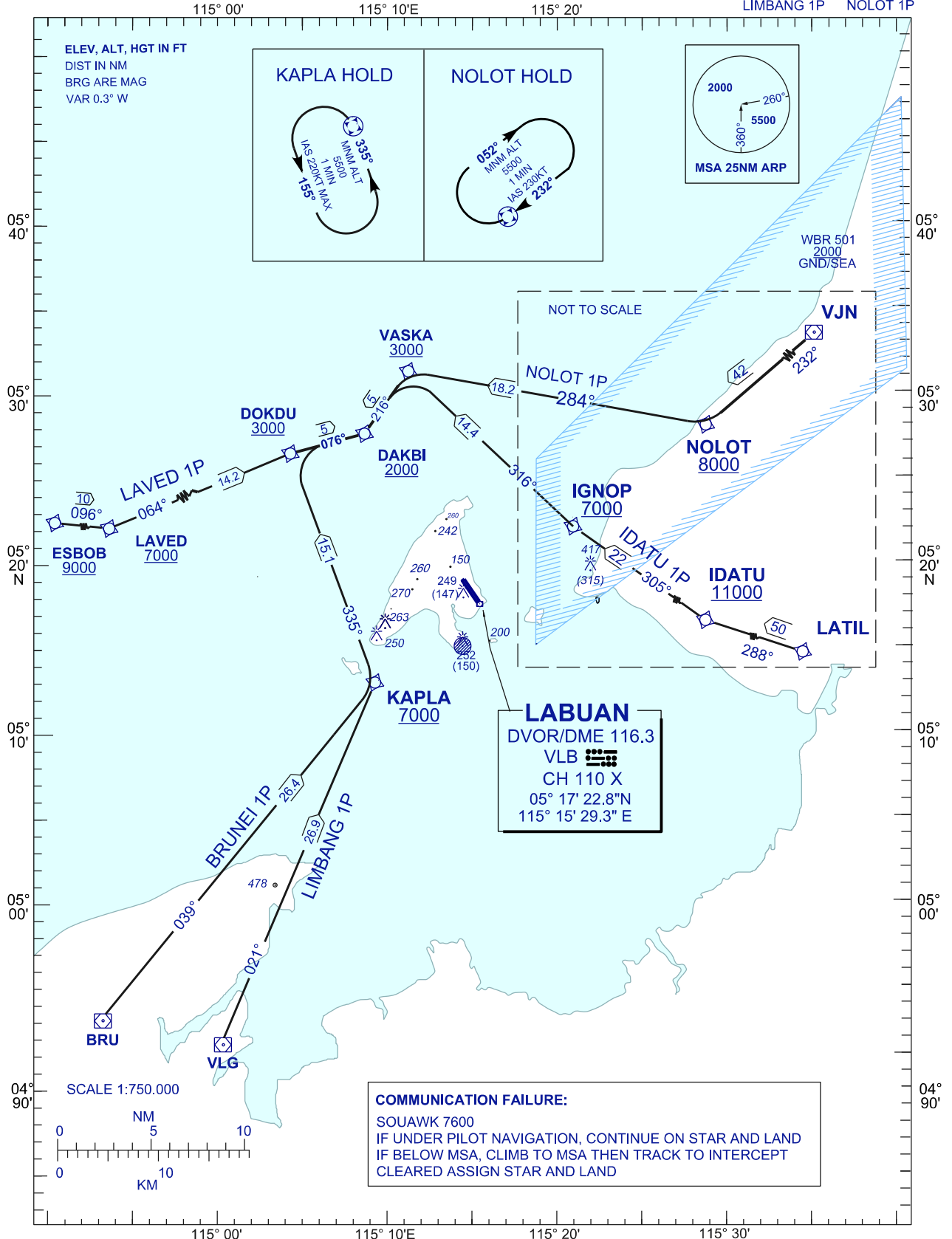
STANDARD ARRIVAL CHART INSTRUMENT (STAR) - ICAO

TRANSITION ALTITUDE
11,000 FT

APP 119.7, 249.3
TWR 118.1, 238.1
SMC 118.35, 235.1
ATIS 126.85

LABUAN/LABUAN (WBKL) ARRIVAL RWY 14 (RNAV 1)

LAVED 1P
BRUNEI 1P IDATU 1P
LIMBANG 1P NOLOT 1P



CHANGES : UPDATING THE CHART FORMAT.