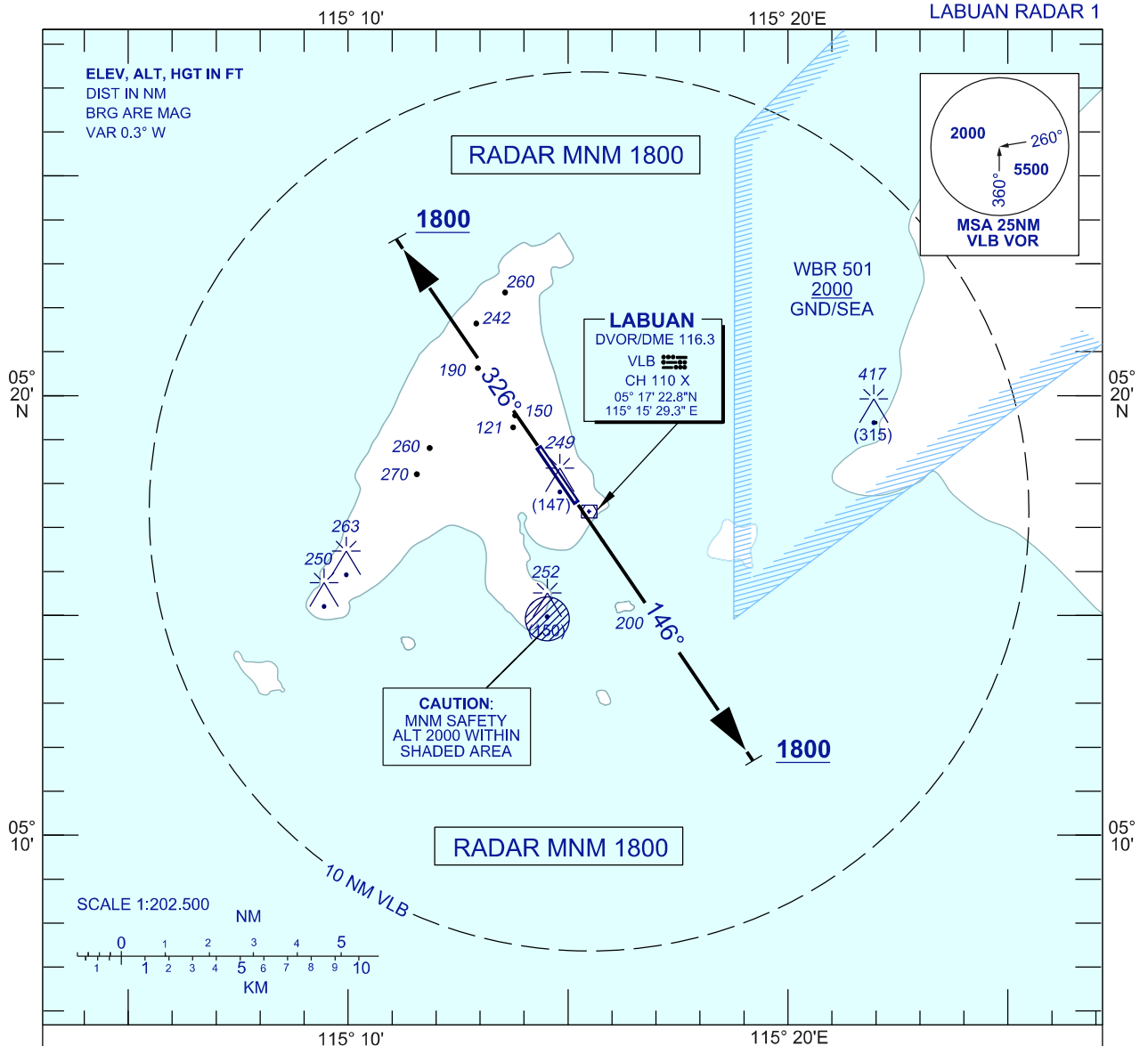


**STANDARD DEPARTURE CHART
INSTRUMENT (SID) - ICAO**

**LABUAN/LABUAN (WBKL)
RWY 14 / RWY 32**

TRANSITION ALTITUDE
11,000 FT

APP 119.7, 249.3
TWR 118.1, 238.1
SMC 118.35, 235.1
ATIS 126.85



RWY 14

TRACK HEADING 146°
AT 1800FT TURN TO ASSIGNED HEADING
CONTACT APP WHEN AIRBORNE

RWY 32

TRACK HEADING 326°
AT 1800FT TURN TO ASSIGNED HEADING
CONTACT APP WHEN AIRBORNE

RATE OF CLIMB						
GS KT	120	150	170	200	240	300
GRADIENT 3.3%	401	502	569	669	803	1003

COMMUNICATION FAILURE :

IMMEDIATELY SQUAWK 7600
MAINTAIN ASSIGNED HEADING CLIMB TO MSA OR LAST ASSIGNED LEVEL IF HIGHER
AS APPLICABLE FOR 2 MIN THEN CLIMB TO FLIGHT PLANNED LEVEL AND INTERCEPT
FLIGHT PLAN TRACK (AS AMENDED BY ATC , IF APPLICABLE)

CHANGES : UPDATING THE CHART FORMAT.