

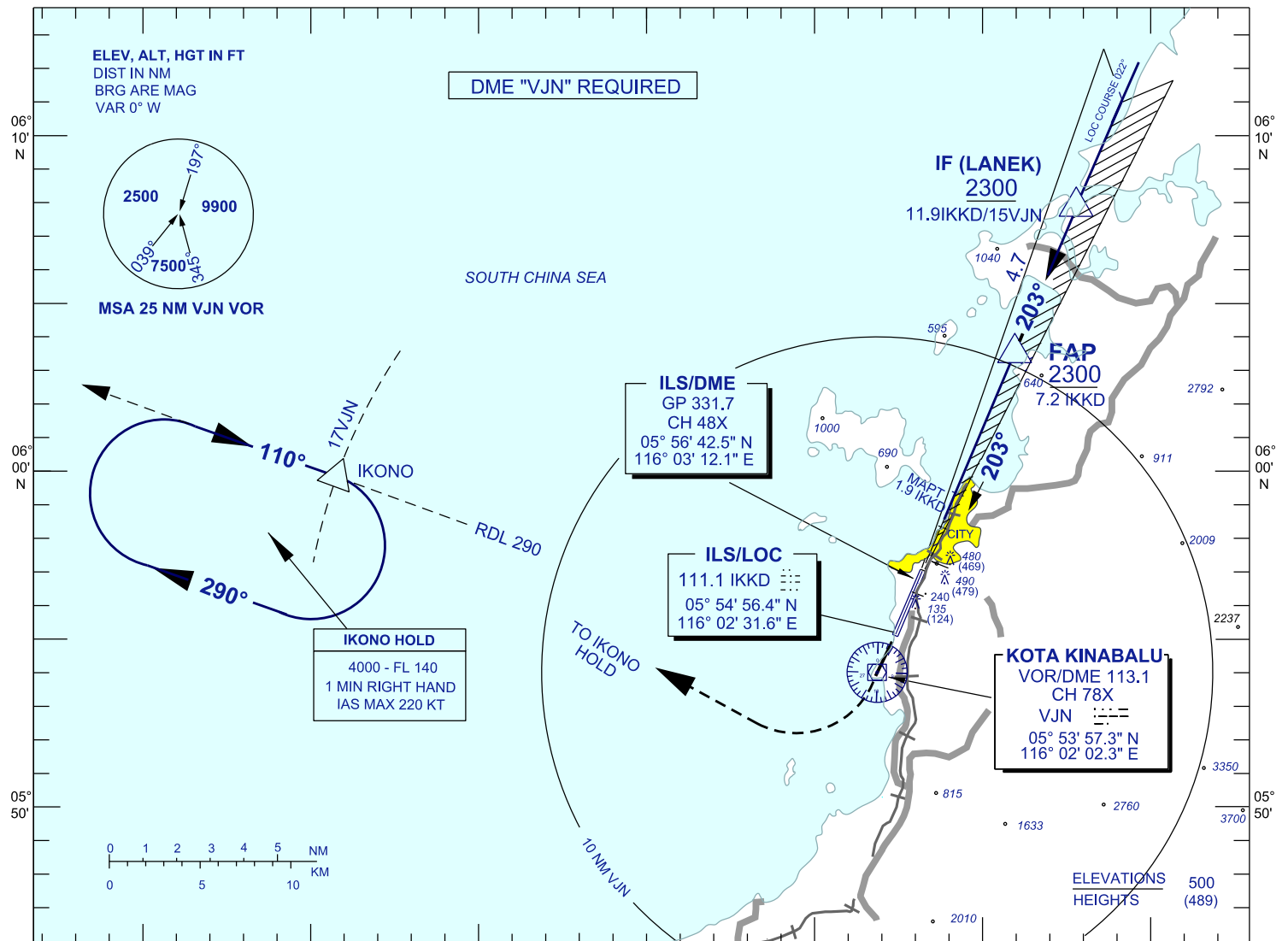
**INSTRUMENT
APPROACH
CHART - ICAO**

**AERODROME ELEV 14 FT
HEIGHTS RELATED TO
THR RWY 20 - ELEV 11 FT**

APP 119.1
TWR 118.3
GND 121.6
ATIS 127.4

**KOTA KINABALU/
KOTA KINABALU (WBKK)
RWY 20**

ILS Z OR LOC Z



DIST BY DME (IKKD)	7.2	6.2	5.2	4.2	3.2	2.2	1.9 / MAPT
ALT 3° APCH PATH (FT)	2300(2289)	1982(1971)	1664(1653)	1346(1335)	1028(1017)	710(699)	630(619)

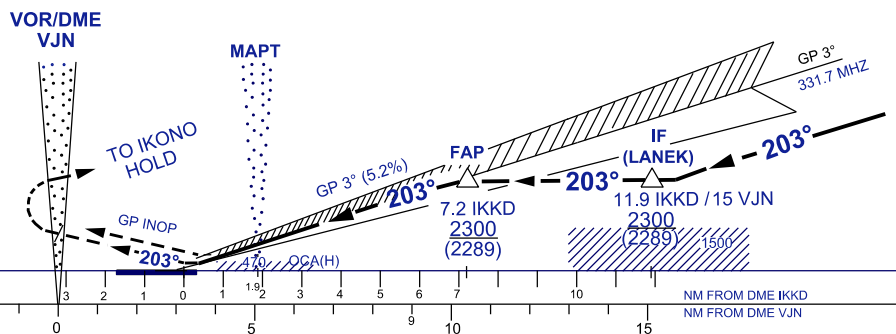
TRANSITION ALT 11,000

MISSED APPROACH

CLIMB ON TRACK 203°, ON PASSING VJN VOR,
TURN RIGHT, TRACK TO IKONO HOLD,
CLIMB TO 4000 FT, OR AS DIRECTED BY ATC

ILS RDH
54 FT

THR ELEV 11
(THR RWY 20)



OCA (H) FT		A	B	C	D
STRAIGHT-IN APPROACH	CAT 1	563(552)	575(564)	583(572)	594(583)
	LOC / DME	630(619) / 1.9 IKKD			
CIRCLING/MNM VIS(NM)		850(839) / 1.0	850(839) / 1.5	1300(1289) / 2.0	1600(1589) / 2.5

GROUND SPEED(KT)		70	90	120	150	180	
FAP - MAPT = 5.3 NM	MIN : SEC	4:32	3:32	2:39	2:07	1:48	
RATE OF DESCENT (3°)		FT/ MIN	366	470	627	784	942

CHANGES : UPDATING THE CHART FORMAT