

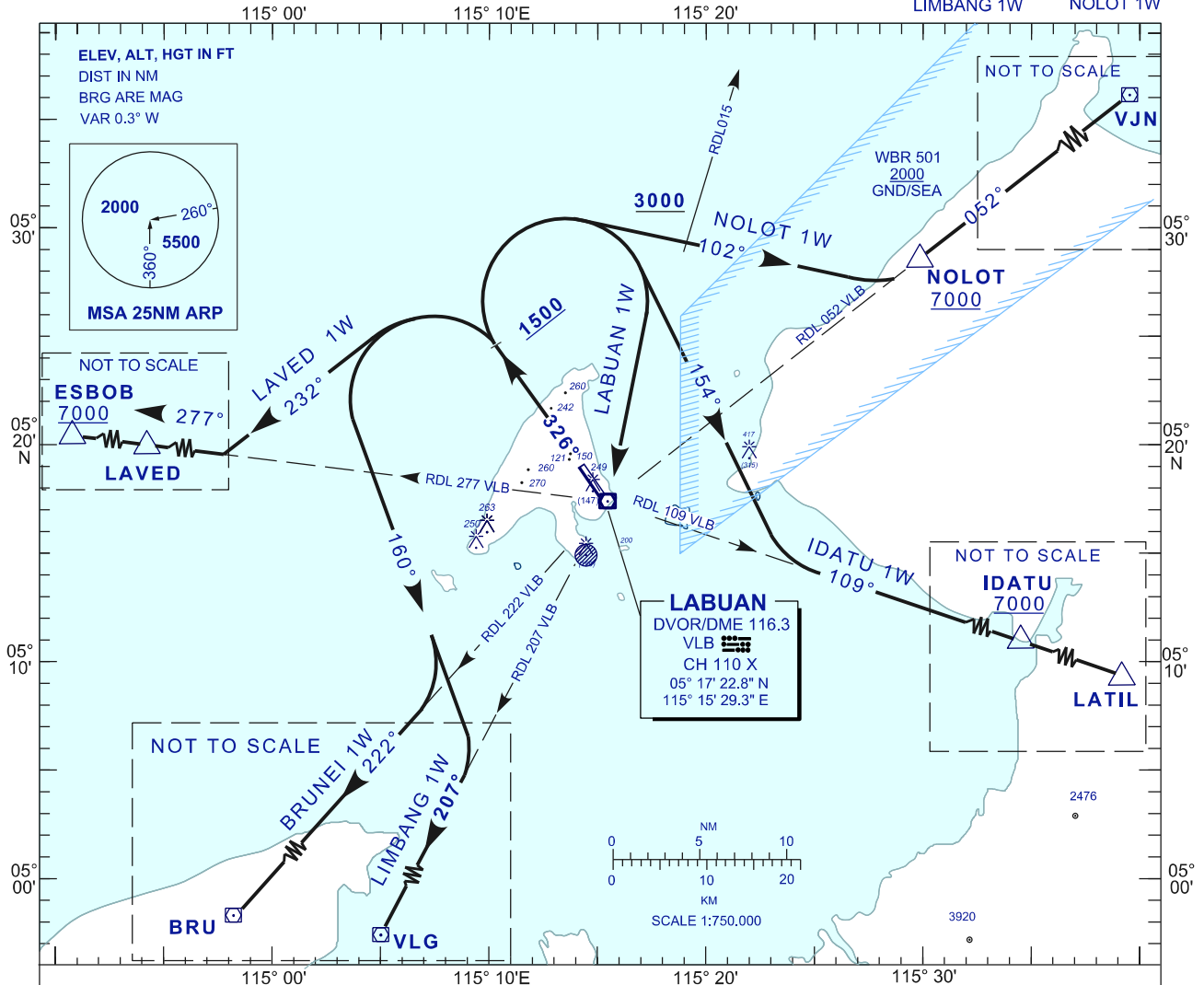
**STANDARD DEPARTURE CHART  
INSTRUMENT (SID) - ICAO**

**LABUAN/LABUAN (WBKL)  
DEPARTURES RWY 32**

APP 119.7, 249.3  
TWR 118.1, 238.1  
SMC 118.35, 235.1  
ATIS 126.85

TRANSITION ALTITUDE  
11,000 FT

LAVED 1W  
BRUNEI 1W  
LIMBANG 1W  
IDATU 1W  
NOLOT 1W



**COMMUNICATION FAILURE :**

- SQUAWK 7600°
- IF UNDER PILOT NAVIGATION, MAINTAIN LAST ASSIGNED LEVEL FOR 3 MINUTES, IF NO ONWARD CLEARANCE IS RECEIVED, SUBSEQUENTLY CLIMB TO COMPLY WITH SID.
- IF UNDER RADAR VECTORED : MAINTAIN VECTOR FOR 2 MINUTES, IF BELOW MSA, CLIMB TO MSA, THEN TRACK TO INTERCEPT CLEARED OR PREVIOUSLY ASSIGNED SID TO DESTINATION.

INITIAL CLIMB PROCEDURE	DESIGNATOR	SID DESCRIPTION
AFTER TAKE-OFF TRACK 326° AT 1500FT OR ABOVE TURN LEFT	LAVED ONE WHISKEY	TRACK 232° TO INTERCEPT RDL 277 VLB VOR OUTBOUND TO LAVED THEN ESBOB
	BRUNEI ONE WHISKEY	TRACK 160° TO INTERCEPT RDL 222 VLB VOR TO BRU VOR
	LIMBANG ONE WHISKEY	TRACK 160° TO INTERCEPT RDL 207 VLB TO VLG VOR
AFTER TAKE-OFF TRACK 326° AT 1500FT OR ABOVE TURN RIGHT	NOLOT ONE WHISKEY	TRACK 102° TO INTERCEPT RDL 052 VLB VOR OUTBOUND TO NOLOT THEN VJN(G460)
	IDATU ONE WHISKEY	TRACK 154° TO INTERCEPT RDL 109 VLB VOR OUTBOUND TO IDATU THEN LATIL
	LABUAN ONE WHISKEY	TRACK DCT TO VLB VOR

CHANGES : UPDATING THE CHART FORMAT.