

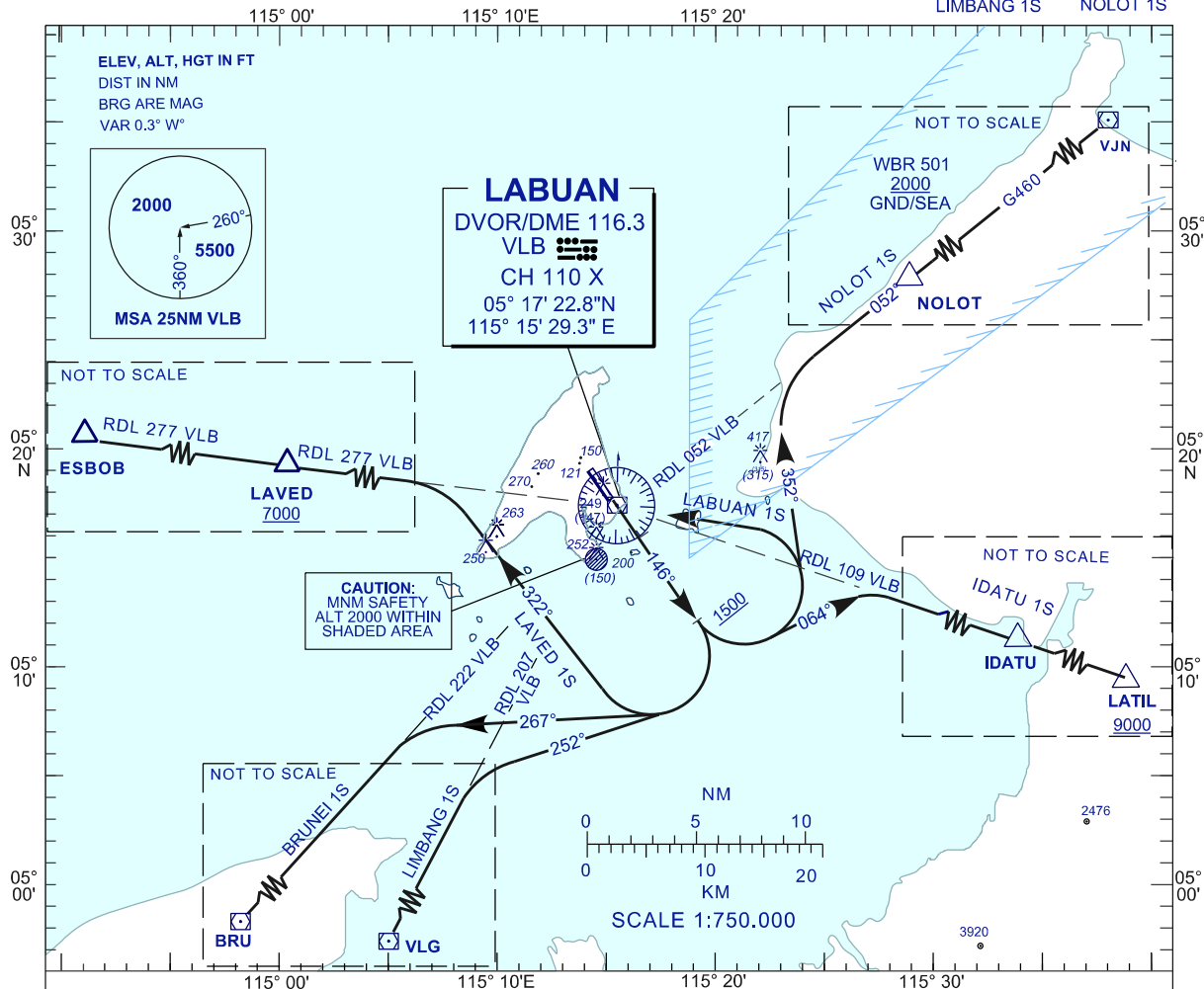
**STANDARD DEPARTURE CHART
INSTRUMENT (SID) - ICAO**

TRANSITION ALTITUDE
11,000 FT

APP 119.70, 249.30
TWR 118.10, 238.10
SMC 118.35, 235.10
ATIS 126.85

**LABUAN/LABUAN (WBKL)
DEPARTURES RWY 14**

LAVED 1S
BRUNEI 1S
LIMBANG 1S
IDATU 1S
NOLOT 1S



COMMUNICATION FAILURE :

- SQUAWK 7600°
IF UNDER PILOT NAVIGATION, MAINTAIN LAST ASSIGNED LEVEL
- FOR 3 MINUTES, IF NO ONWARD CLEARANCE IS RECEIVED, SUBSEQUENTLY CLIMB TO COMPLY WITH SID.
- IF UNDER RADAR VECTORING : MAINTAIN VECTOR FOR 2 MINUTES, IF BELOW MSA, CLIMB TO MSA, THEN TRACK TO INTERCEPT CLEARED OR PREVIOUSLY ASSIGNED SID TO DESTINATION.

INITIAL CLIMB PROCEDURE	DESIGNATOR	SID DESCRIPTION
AFTER TAKE-OFF TRACK 146° AT 1500FT OR ABOVE TURN RIGHT	LAVED ONE SIERRA DEPARTURE	TRACK 322° TO INTERCEPT RDL 277 VLB VOR OUTBOUND TO LAVED THEN ESBOB
	BRUNEI ONE SIERRA DEPARTURE	TRACK 267° TO INTERCEPT RDL 222 VLB VOR TO BRU VOR
	LIMBANG ONE SIERRA DEPARTURE	TRACK 252° TO INTERCEPT RDL 207 VLB TO VLG VOR
AFTER TAKE-OFF TRACK 146° AT 1500FT OR ABOVE TURN LEFT	NOLOT ONE SIERRA DEPARTURE	TRACK 352° TO INTERCEPT RDL 052 VLB VOR OUTBOUND TO NOLOT THEN VJN VOR(G460)
	IDATU ONE SIERRA DEPARTURE	TRACK 064° TO INTERCEPT RDL109 VLB VOR OUTBOUND TO IDATU THEN LATIL NOTE : PDG 6.1% UNTIL 9000
	LABUAN ONE SIERRA DEPARTURE	TRACK DCT TO VLB VOR THEN RDL 277 OUTBOUND

CHANGES : UPDATING THE CHART FORMAT.