

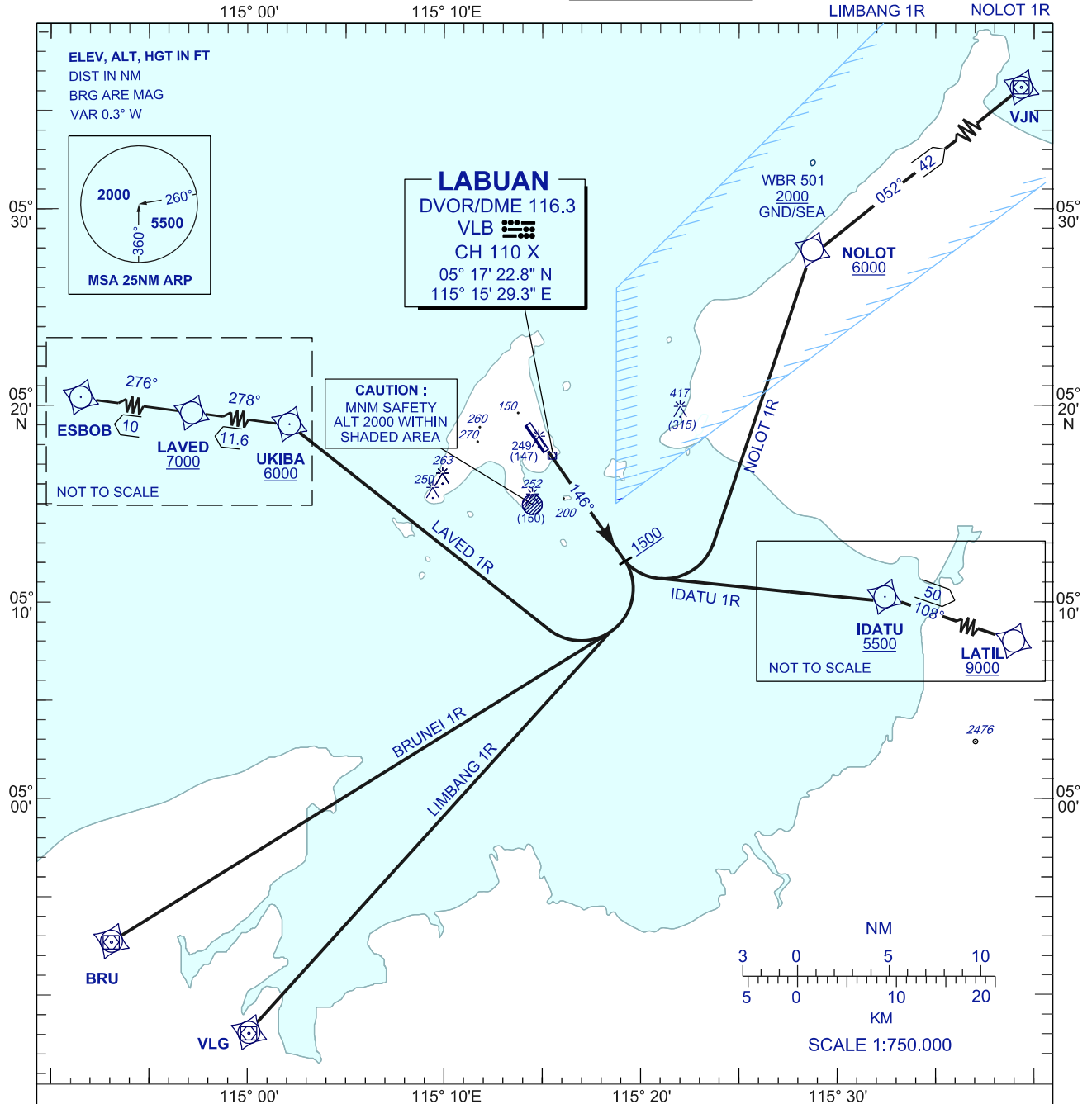
**STANDARD DEPARTURE CHART
INSTRUMENT (SID) - ICAO**

**LABUAN/LABUAN (WBKL)
RWY 14 (RNAV 1)**

TRANSITION ALTITUDE
11,000 FT

APP 119.7, 249.3
TWR 118.1, 238.1
SMC 118.35, 235.1
ATIS 126.85

LAVED 1R
BRUNEI 1R
LIMBANG 1R
IDATU 1R
NOLOT 1R



COMMUNICATION FAILURE :

- SQUAWK 7600°
- IF UNDER PILOT NAVIGATION, MAINTAIN LAST ASSIGNED LEVEL FOR 3 MINUTES, IF NO ONWARD CLEARANCE IS RECEIVED. SUBSEQUENTLY CLIMB TO COMPLY WITH SID.
- IF UNDER RADAR VECTORING : MAINTAIN VECTOR FOR 2 MINUTES, IF BELOW MSA, CLIMB TO MSA, THEN TRACK TO INTERCEPT CLEARED OR PREVIOUSLY ASSIGNED SID TO DESTINATION.

CHANGES : UPDATING THE CHART FORMAT.