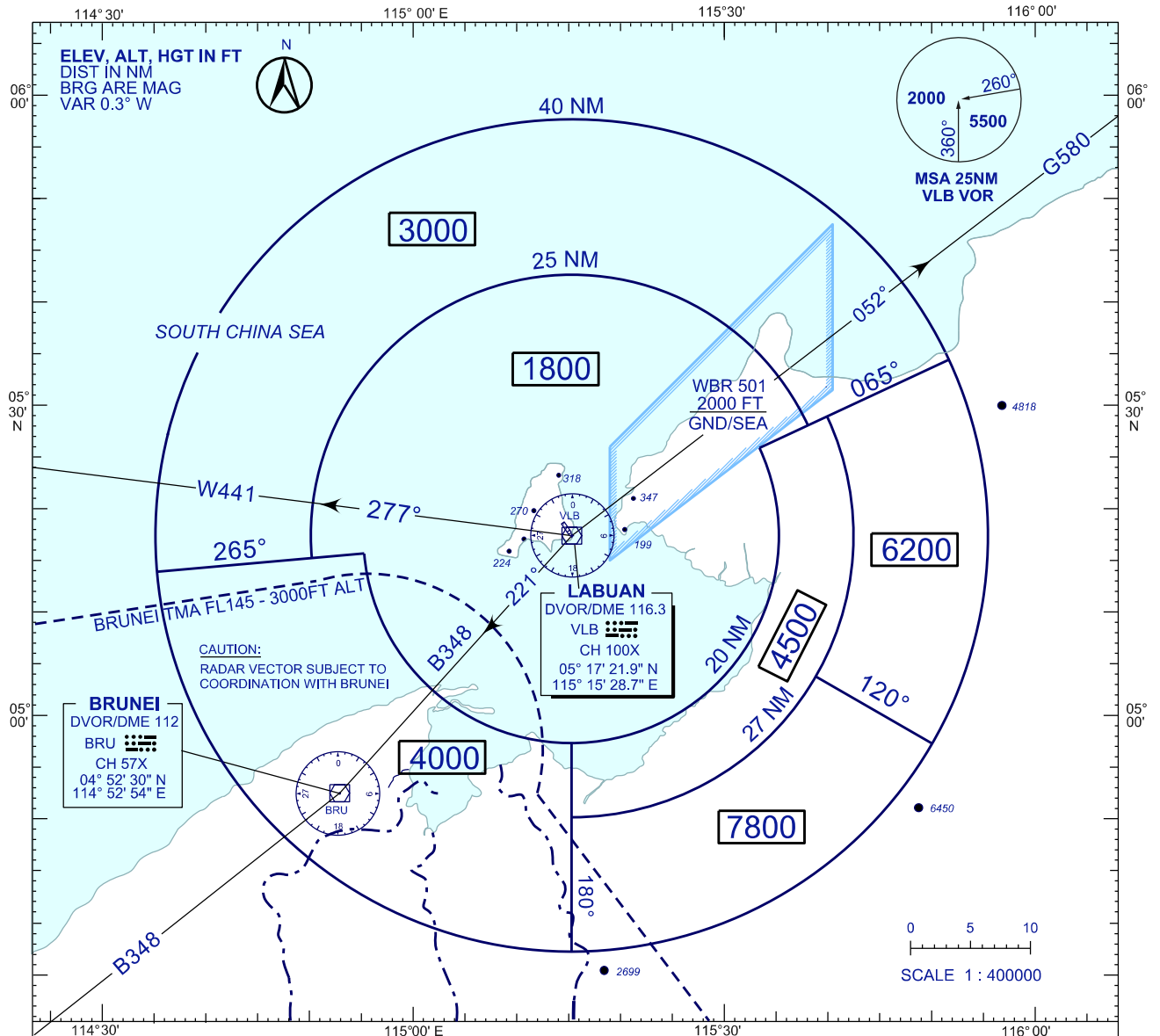


**ATC SURVEILLANCE MINIMUM  
ALTITUDE CHART - ICAO**

**AERODROME ELEV 100 FT  
TRANSITION ALT 11000**

APP 119.7, 249.3  
TWR 118.1, 238.1  
SMC 118.35, 235.1  
ATIS 126.85

**LABUAN/LABUAN (WBKL)**



**LOSS OF RADIO COMMUNICATION PROCEDURES :**

1. SET TRANSPONDER TO 7600
2. A) IN VMC  
CONTINUE APPROACH VISUALLY FOR THE DUTY  
RUNWAY AND LAND ; OR  
b) IN IMC  
MAINTAIN LAST ASSIGNED ALTITUDE ; OR CLIMB  
TO MSA IF THE ASSIGNED ALTITUDE IS BELOW  
MSA AND TRACK DIRECT TO VLB VOR
3. AT THE HOLDING FACILITY VLB, CARRY OUT  
THE STANDARD RADIO COMMUNICATION  
FAILURE PROCEDURE
4. MILITARY AIRCRAFT SHALL CARRY OUT STANDARD  
RADIO COMMUNICATION FAILURE PROCEDURE  
AS STATED IN THE LABUAN UOI

**NOTE :**

THE RVA COMPRISES AN AREA OF 40 NM RADIUS  
OF VLB VOR/DME STATION. RADAR VECTORING  
SHALL BE PROVIDED WITHIN LABUAN CTR AND  
PART OF KOTA BHARU TMA

ALL BEARINGS ARE MAGNETIC AND TAKEN FROM  
VLB. ONLY SIGNIFICANT OBSTRUCTIONS AND SPOT  
HEIGHTS ARE SHOWN. THESE ARE BASED ON QNH.

ALTITUDES SHOWN PROVIDE 1000 FEET OF  
CLEARANCE OVER ALL OBSTACLES WITHIN 3 NM  
OF THE AREA BOUNDARY WHEN UP TO 20 NM

FROM THE RADAR ANTENNA, OR WITHIN 5 NM OF  
THE BOUNDARY AT DISTANCE GREATER THAN  
20 NM FROM ANTENNA.

CHANGES: UPDATING THE CHART FORMAT.