

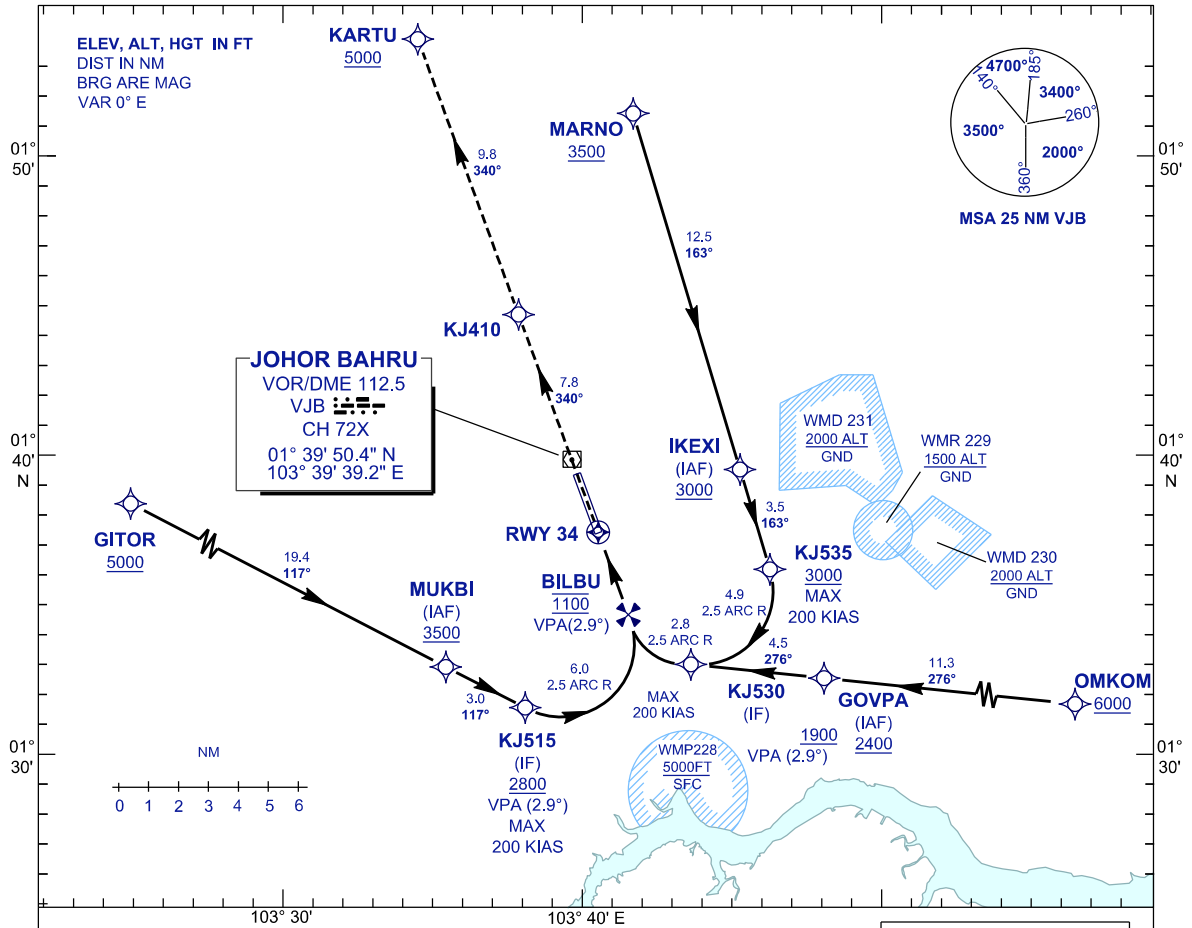
**INSTRUMENT  
APPROACH  
CHART - ICAO**

**AERODROME ELEV 135 FT**  
HEIGHT RELATED TO  
THR RWY 34 - ELEV 122 FT

APP 124.70 (P)  
121.05 (S)  
TWR 118.15  
SMC 121.80  
ATIS 123.05

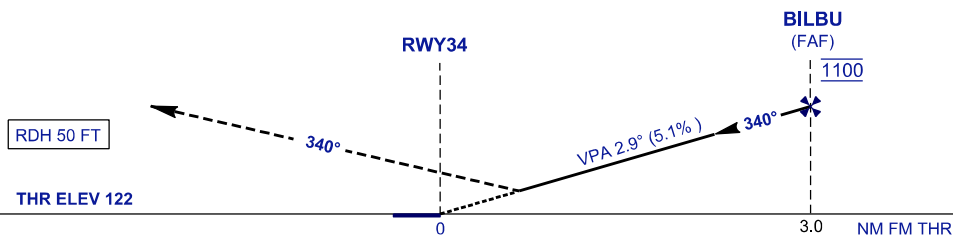
**JOHOR BAHRU/SENAI  
INTERNATIONAL AIRPORT (WMKJ)**

RNP Z RWY 34 (AR)



**MISSED APPROACH**  
CLIMB TO 5000 FT ON RNP MISSED APPROACH TRACK TO  
KARTU OR AS DIRECTED BY ATC.

TRANSITION LEVEL FL 130  
TRANSITION ALT 11000



OCA/H		
ACFT CAT.	C	D
RNP 0.3	758 (636)	

GROUND SPEED - KT	70	90	100	120	140	160
RATE OF DESCENT (2.8°) ( FT/MIN )	347	446	495	594	693	792

DISTANCE TO THRESHOLD (NM)	3.0	2.5	2.0	1.9
ALTITUDE (FT)	1100	940	790	760

- 1. AUTHORIZATION REQUIRED
- 2. GNSS REQUIRED
- 3. RF REQUIRED
- 4. APPROACH NOT AUTHORIZED WHEN AIRPORT TEMPERATURE BELOW 18°C OR ABOVE 40°C
- 5. MISSED APPROACH CLIMB GRADIENT 4.6% REQUIRED TO 5000
- 6. WMKJ ALTIMETER SETTING REQUIRED.
- 7. PAPI AND VERTICAL PATH ANGLE NOT COINCIDENT
- 8. RNP 0.3 REQUIRED FROM IAFS/IF TO RWY

CHANGES : CATIS TO ATIS IN FREQUENCY BOX.