

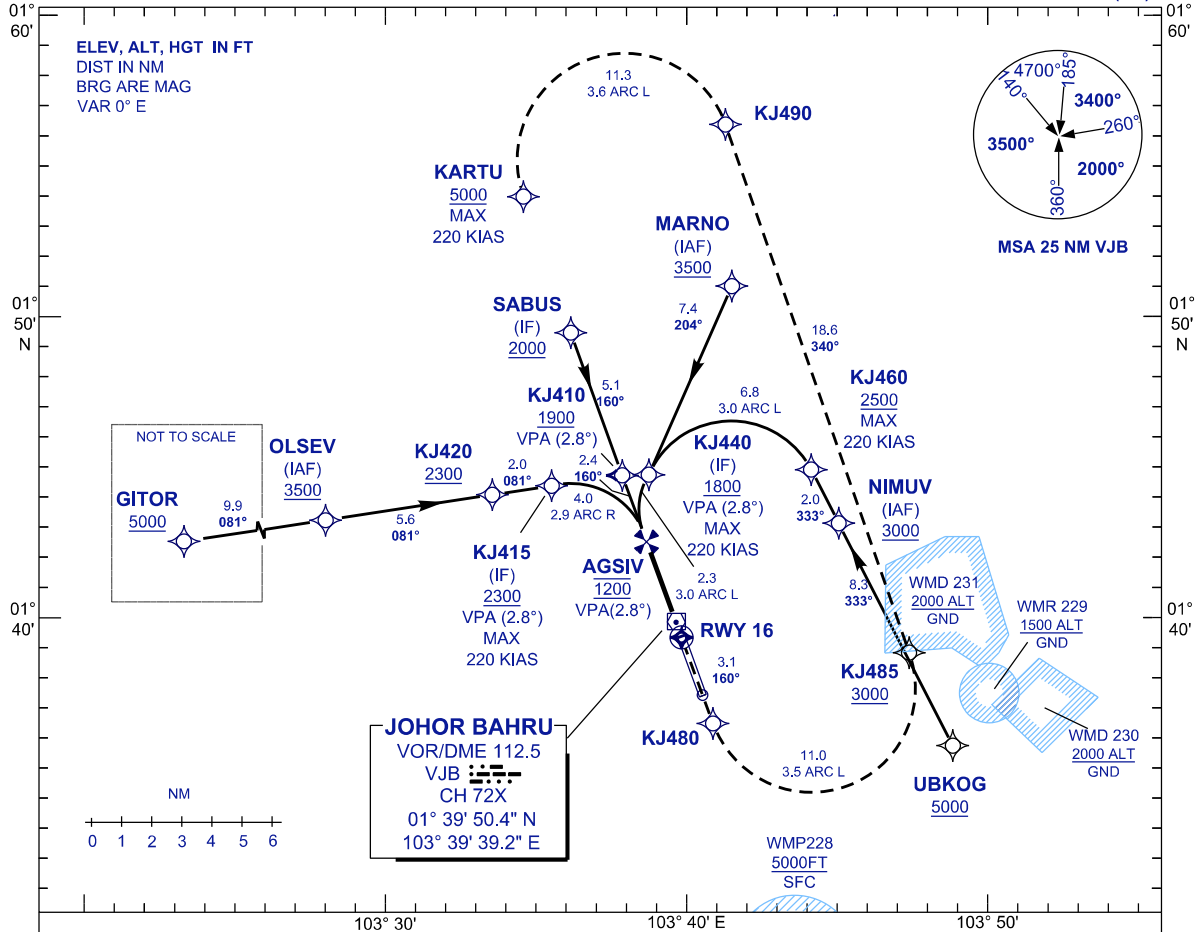
INSTRUMENT APPROACH CHART - ICAO

AERODROME ELEV 135 FT
HEIGHT RELATED TO
THR RWY 16 - ELEV 135 FT

APP 124.70 (P)
121.05 (S)
TWR 118.15
SMC 121.80
ATIS 123.05

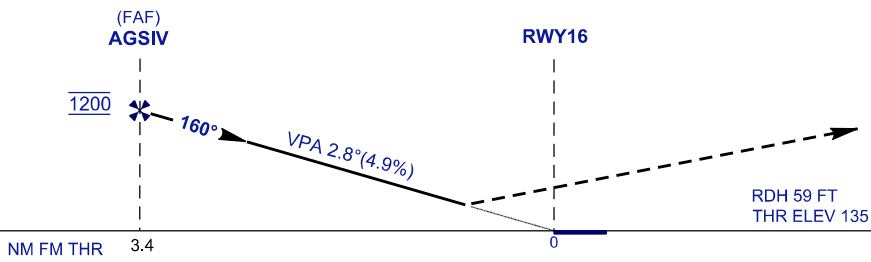
JOHOR BAHRU/SENAI INTERNATIONAL AIRPORT (WMKJ)

RNP Z RWY 16 (AR)



TRANSITION LEVEL FL 130
TRANSITION ALT 11000

MISSED APPROACH
CLIMB TO 5000 ON RNP MISSED APPROACH TRACK TO KARTU OR AS DIRECTED BY ATC. MAX 220 KIAS UNTIL TURN COMPLETE AT KARTU.



OCA/H		
ACFT CAT.	C	D
RNP 0.3	786 (651)	

GROUND SPEED - KT	70	90	100	120	140	160
RATE OF DESCENT (2.8°) (FEET/MIN)	347	446	495	594	693	792

DISTANCE TO THRESHOLD (NM)	3.4	3.0	2.0	
ALTITUDE (FT)	1200	1090	780	

- 1. AUTHORIZATION REQUIRED
- 2. GNSS REQUIRED
- 3. RF REQUIRED
- 4. APPROACH NOT AUTHORIZED WHEN AIRPORT TEMPERATURE BELOW 18°C OR ABOVE 40°C
- 5. MISSED APPROACH REQUIRES RNP<1.0 TO KJ480
- 6. MISSED APPROACH CLIMB GRADIENT 2.7% REQUIRED TO 3000
- 7. PAPI AND VERTICAL PATH ANGLE NOT COINCIDENT
- 8. WMKJ ALTIMETER SETTING REQUIRED.
- 9. RNP 0.3 REQUIRED FROM IAFS/IF TO RWY

CHANGES : CATIS TO ATIS IN FREQUENCY BOX.