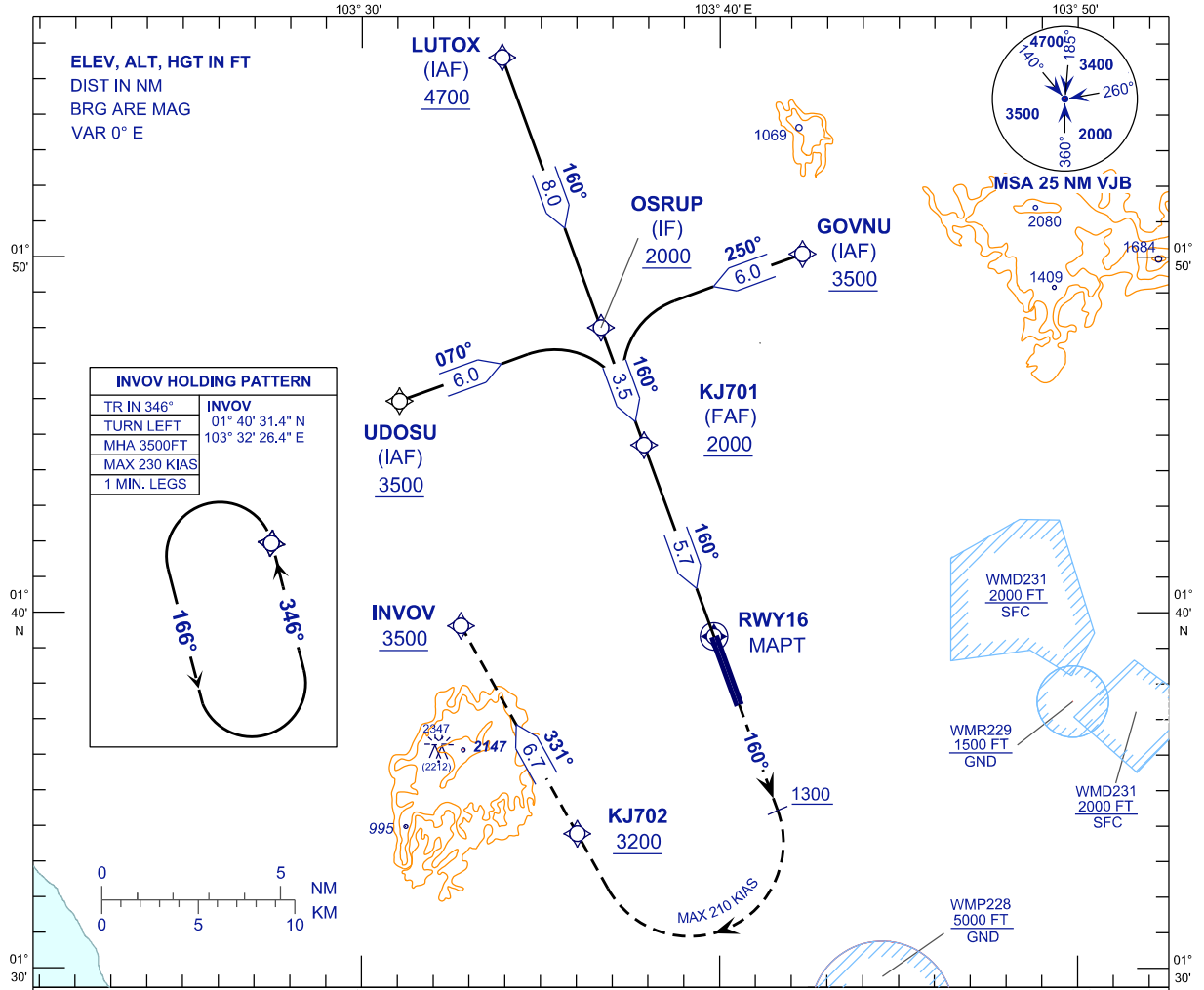


**INSTRUMENT
APPROACH
CHART - ICAO**

AERODROME ELEV 135FT
HEIGHT RELATED TO
THR RWY 16 - ELEV 135FT

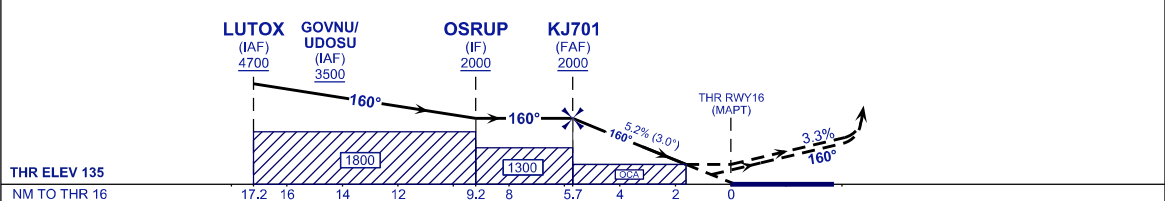
APP	124.70 (P)
	121.05 (S)
TWR	118.15
SMC	121.80
ATIS	123.05

**JOHOR BAHRU/SENAI
INTERNATIONAL AIRPORT (WMKJ)
RNP X RWY 16**



MISSED APPROACH:
CLIMB TO 3500FT OR ABOVE ON TR 160°, ON PASSING 1300FT TURN RIGHT, DIRECT TO KJ702 THEN INVOV AND HOLD, OR AS DIRECTED BY ATC.

CAUTION:
MISSED APPROACH TURN SPEED MAX 210 KIAS, MIN 3.3% CLIMB GRADIENT TILL PASSING 3500FT.



OCA (OCH)	A	B	C	D
LNAV	730 (595)			
LNAV/VNAV	412 (277)			

NOTES:
- GNSS REQUIRED.
- WMKJ QNH SETTING REQUIRED.
- VPA AND PAPI NOT COINCIDENT.
- BARO-VNAV NOT AUTHORIZED WHEN AIRPORT TEMPERATURE BELOW 18°C OR ABOVE 40°C.

DIST THR RWY 16 (NM)	5.8	4.8	3.8	2.8	1.8	0.8
ALTITUDE (FT)	2000	1722	1404	1085	767	449
GROUND SPEED (KT)	80	100	120	140	160	180
FAF - RWY16 (5.7NM) (MIN:SEC)	4:15	3:24	2:50	2:26	2:08	1:53
RATE OF DESCEND (318.5 FT/NM) (FT/MIN)	420	530	640	740	850	960

CHANGES : CATIS TO ATIS IN FREQUENCY BOX,
TURN SPEED IAS 230KT TO MAX 230KIAS.