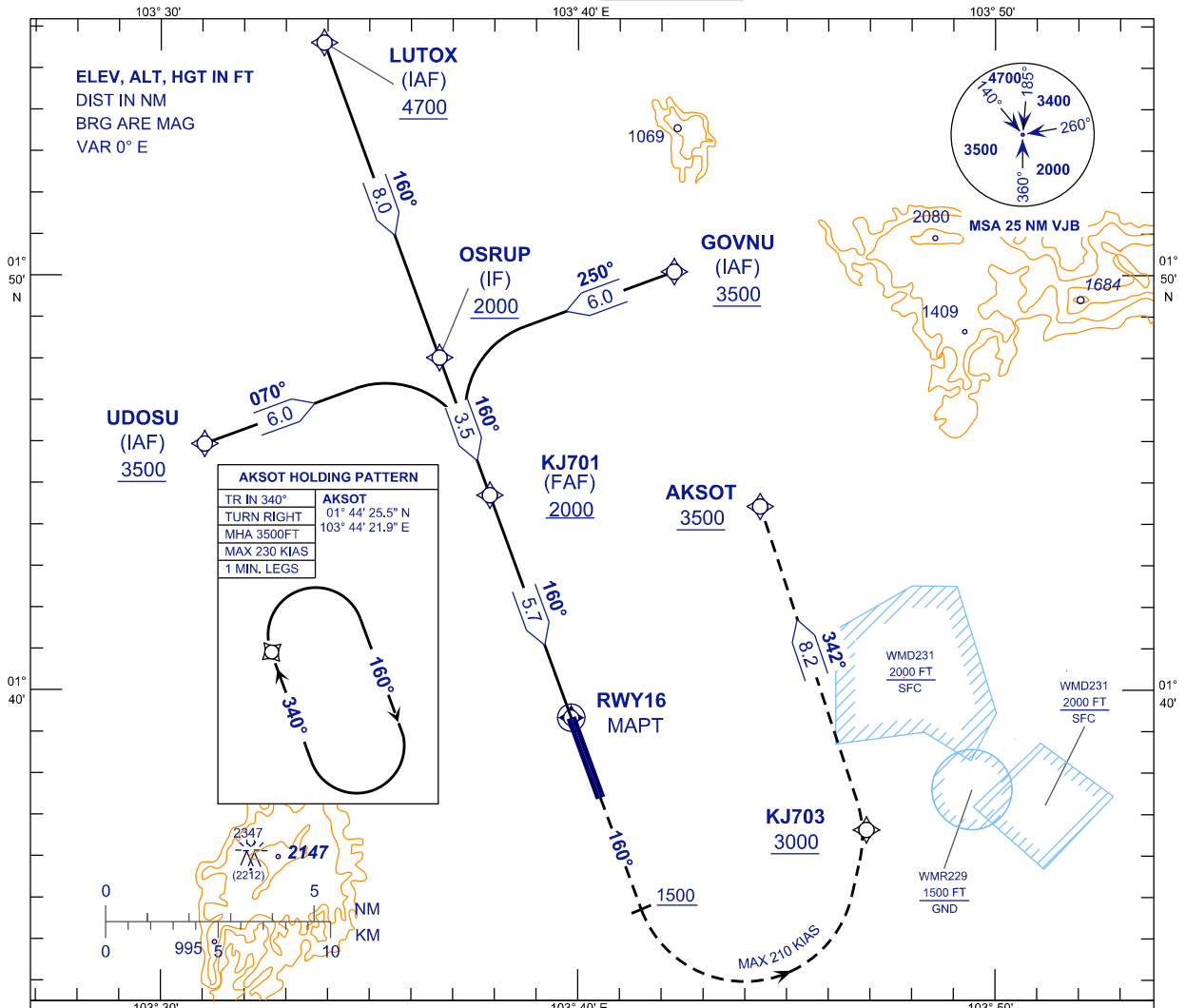


**INSTRUMENT  
APPROACH  
CHART - ICAO**

**AERODROME ELEV 135FT**  
HEIGHT RELATED TO  
THR RWY 16 - ELEV 135FT

APP	124.70 (P)
	121.05 (S)
TWR	118.15
SMC	121.80
ATIS	123.05

**JOHOR BAHRU/SENAI  
INTERNATIONAL AIRPORT (WMKJ)  
RNP Y RWY 16**



**AKSOT HOLDING PATTERN**

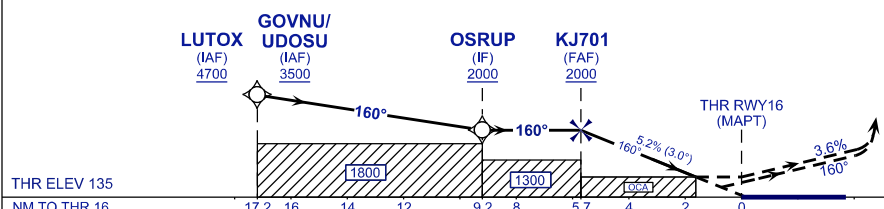
TR IN 340°	AKSOT
TURN RIGHT	01° 44' 25.5" N
MHA	3500FT
MAX 230 KIAS	
1 MIN. LEGS	

**TRANSITION LEVEL FL 130**  
TRANSITION ALT 11,000 FT

**TCH 59 FT**

**MISSED APPROACH:**  
CLIMB TO 3500FT OR ABOVE ON TR 160°, ON PASSING 1500FT TURN LEFT, DIRECT TO KJ703 THEN AKSOT AND HOLD, OR AS DIRECTED BY ATC.

**CAUTION:**  
MISSED APPROACH TURN SPEED MAX 210 KIAS, MIN 3.6% CLIMB GRADIENT TILL PASSING 3500FT.



OCA (OCH)	A	B	C	D
LNAV	730 (595)			
LNAV/VNAV	412 (277)			

**NOTES:**  
- GNSS REQUIRED.  
- WMKJ QNH SETTING REQUIRED.  
- VPA AND PAPI NOT COINCIDENT.  
- BARO-VNAV NOT AUTHORIZED WHEN AIRPORT TEMPERATURE BELOW 18°C OR ABOVE 40°C.

DIST THR RWY 16 (NM)	5.8	4.8	3.8	2.8	1.8	0.8
ALTITUDE (FT)	2000	1713	1395	1076	758	439

GROUND SPEED (KT)	80	100	120	140	160	180
FAF - RWY16 (5.7NM) (MIN:SEC)	4:17	3:25	2:51	2:27	2:08	1:54
RATE OF DESCEND (318.5 FT/NM) (FT/MIN)	420	530	640	740	850	960

**CHANGES :** TURN SPEED IAS 230KT TO MAX 230KIAS.  
CATIS TO ATIS IN FREQUENCY BOX.  
REMOVE DIST 4.9.