

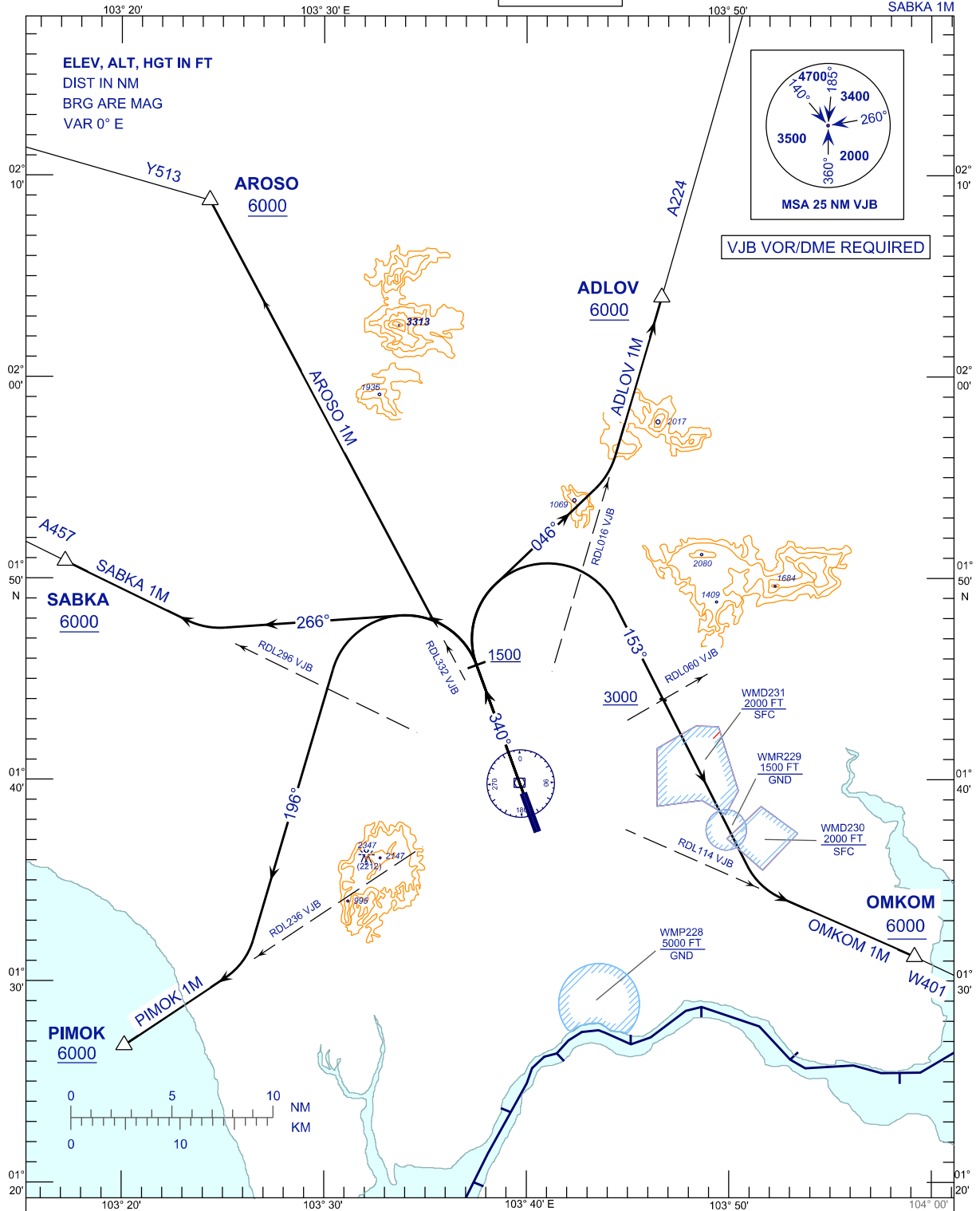
**STANDARD DEPARTURE CHART
INSTRUMENT (SID) - ICAO**

TRANSITION ALTITUDE
11000FT

APP	124.70 (P)
	121.05 (S)
TWR	118.15
SMC	121.80
ATIS	123.05

**JOHOR BAHRU/SENAI
INTERNATIONAL AIRPORT (WMKJ)
RWY 34**

AROSO 1M ADLOV 1M
OMKOM 1M PIMOK 1M
SABKA 1M



CHANGES : CATIS TO ATIS IN FREQUENCY BOX.