

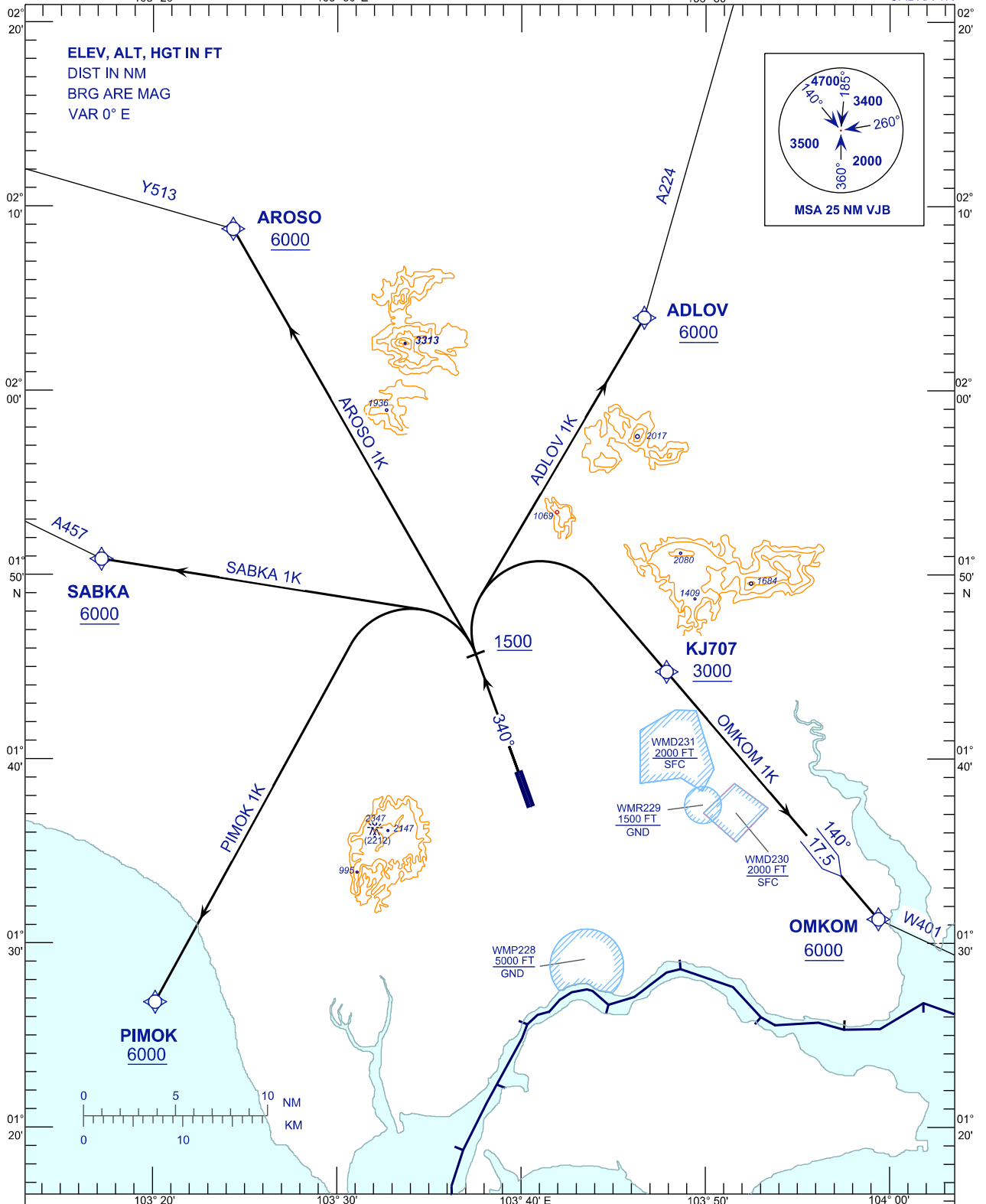
**STANDARD DEPARTURE CHART  
INSTRUMENT (SID) - ICAO**

TRANSITION ALTITUDE  
11000FT

APP	124.70 (P)
TWR	118.15
SMC	121.80
ATIS	123.05

**JOHOR BAHRU/SENAI  
INTERNATIONAL AIRPORT (WMKJ)  
RNAV RWY 34**

AROSO 1K PIMOK 1K  
ADLOV 1K OMKOM 1K  
SABKA 1K



CHANGES : CATIS TO ATIS IN FREQUENCY BOX.