

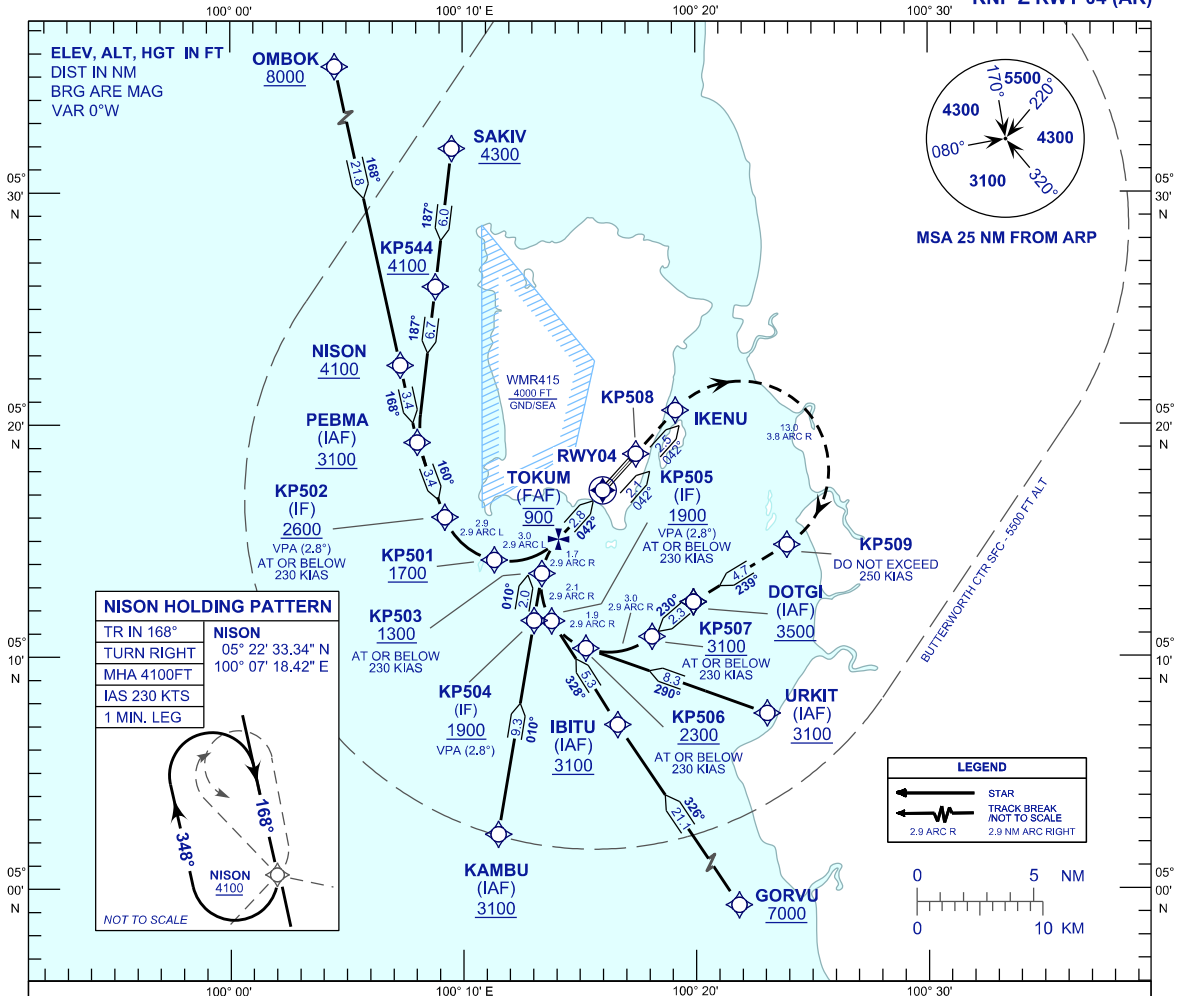
**INSTRUMENT
APPROACH
CHART - ICAO**

AERODROME ELEV 10 FT
HEIGHT RELATED TO
THR RWY 04 - ELEV 9 FT

APP 125.925
TWR 121.10
SMC 121.60, 121.90
ATIS 126.40

**PENANG/PENANG
INTERNATIONAL AIRPORT (WMKP)**

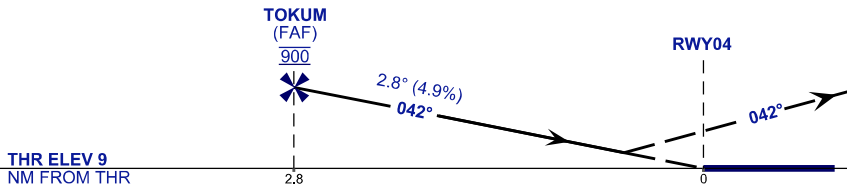
RNP Z RWY 04 (AR)



VPA 2.8°
RDH 50FT

MISSED APPROACH
CLIMB TO 3500FT VIA THE RNP MISSED APPROACH,
TRACK TO DOTGI OR AS DIRECTED BY ATC.

TRANSITION LEVEL FL130
TRANSITION ALT 11000 FT



THR ELEV 9
NM FROM THR

STRAIGHT-IN APPROACH	OCA (OCH)	
CATEGORY OF AIRCRAFT	C	D
RNP (0.30)	785 (776)	
CIRCLING AND ALTERNATE N/A		

AUTHORIZATION REQUIRED

NOTES

- 1) APPROACH NOT AUTHORIZED WHEN AIRPORT TEMPERATURE BELOW 19°C OR ABOVE 40°C.
- 2) RF REQUIRED.
- 3) WMKP ALTIMETER SETTING REQUIRED.
- 4) GNSS REQUIRED.
- 5) PAPI AND VERTICAL PATH ANGLE NOT COINCIDENT.
- 6) RNP 1.0 REQUIRED FROM OMBOK & SAKIV TO IAF.
- 7) RNP 0.3 REQUIRED FROM IAF'S TO FAF.
- 8) RNP 0.3 REQUIRED FROM DA TO KP508.
- 9) RNP 0.5 REQUIRED FROM KP508 TO IKENU.
- 10) LATERAL TRANSITION TO MAP MUST NOT BE INITIATED PRIOR TO DA/H POSITION.

NEW CHART