

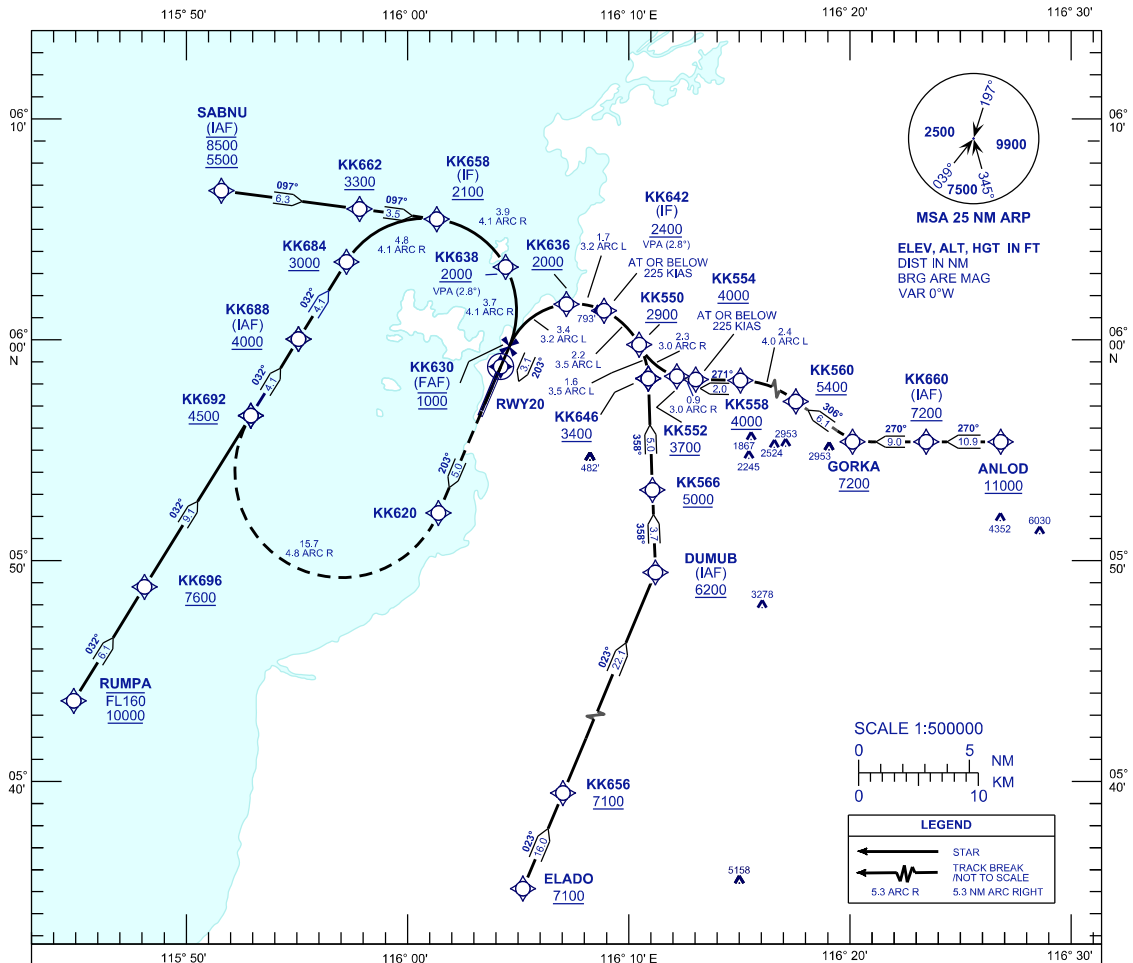
**INSTRUMENT
APPROACH
CHART - ICAO**

AERODROME ELEV 14 FT
HEIGHT RELATED TO
THR RWY 20 - ELEV 11 FT

APP	119.1
TWR	118.3
GND	121.6
ATIS	127.4

**KOTA KINABALU/
KOTA KINABALU (WBKK)**

RNP Z RWY 20 (AR)

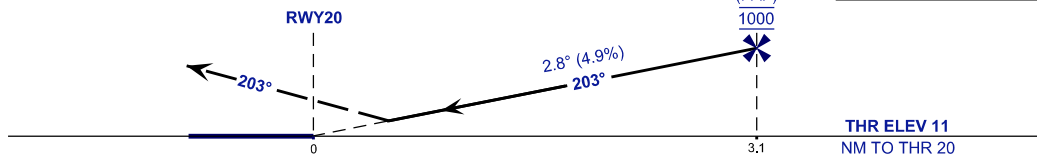


VPA 2.8°
RDH 55FT

MISSED APPROACH
CLIMB TO 4000 FT VIA THE RNP MISSED APPROACH
TRACK TO KK688 OR AS DIRECTED BY ATC.

TRANSITION LEVEL FL130
TRANSITION ALT 11000 FT

VSS PENETRATIONS 400 M
PRIOR TO THR.



THR ELEV 11
NM TO THR 20

STRAIGHT - IN APPROACH	OCA (OCH)
CATEGORY OF AIRCRAFT	C D
RNP 0.3	705 (695)
CIRCLING AND ALTERNATE N/A	

GROUND SPEED - KT	70	90	100	120	140	160
RATE OF DESCENT (2.8°) (FEET/MIN)	347	446	495	594	693	792

DISTANCE TO THRESHOLD (NM)	3.1	2	1
ALTITUDE (FEET)	1000	670	370

- 1. AUTHORIZATION REQUIRED
- 2. GNSS REQUIRED
- 3. RF REQUIRED
- 4. APPROACH NOT AUTHORIZED WHEN AIRPORT TEMPERATURE BELOW 17°C OR ABOVE 40°C.
- 5. WBKK ALTIMETER SETTING REQUIRED.
- 6. PAPI AND VERTICAL PATH ANGLE NOT COINCIDENT.
- 7. RNP 0.3 REQUIRED FROM IAF'S TO FAF

CHANGES : CHART IDENTIFICATION