

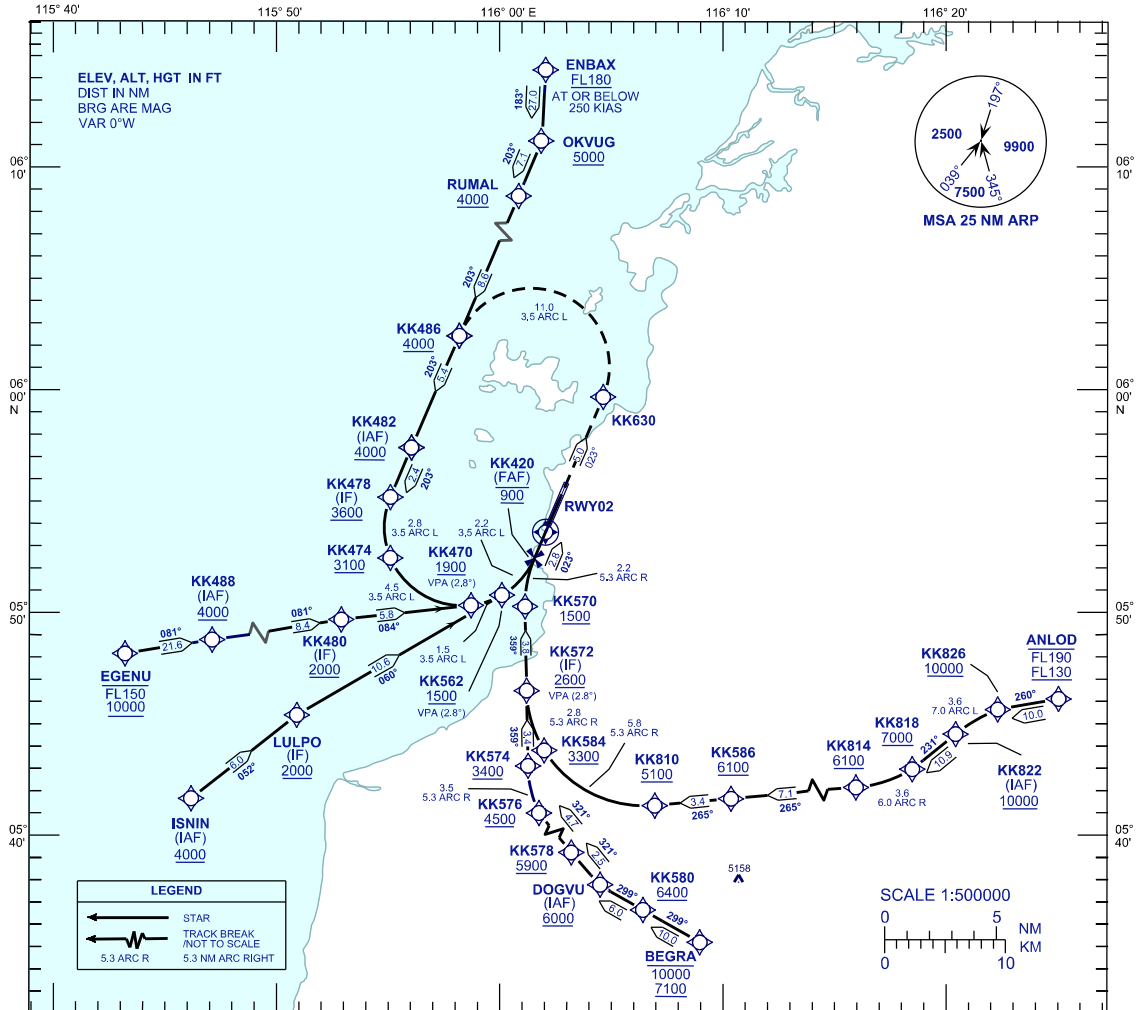
**INSTRUMENT
APPROACH
CHART - ICAO**

AERODROME ELEV 14 FT
HEIGHT RELATED TO
THR RWY 02 - ELEV 14 FT

APP	119.1
TWR	118.3
GND	121.6
ATIS	127.4

**KOTA KINABALU/
KOTA KINABALU (WBKK)**

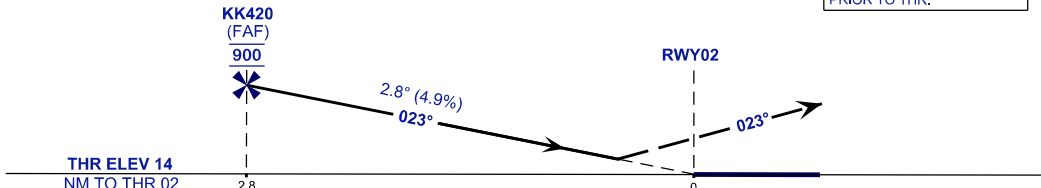
RNP Z RWY 02 (AR)



VPA 2.8°
RDH 58FT

MISSED APPROACH
CLIMB TO 4000 FT VIA THE RNP MISSED APPROACH
TRACK TO KK482 OR AS DIRECTED BY ATC.

TRANSITION LEVEL FL130
TRANSITION ALT 11000 FT
VSS PENETRATIONS 1,200 M
PRIOR TO THR.



STRAIGHT - IN APPROACH	OCA (OCH)	
CATEGORY OF AIRCRAFT	C	D
RNP 0.3	525 (511)	
CIRCLING AND ALTERNATE N/A		

GROUND SPEED - KT	70	90	100	120	140	160
RATE OF DESCENT (2.8°) (FEET/MIN)	347	446	495	594	693	792
DISTANCE TO THRESHOLD (NM)	2.8	2	1			
ALTITUDE (FEET)	900	670	370			

- 1. AUTHORIZATION REQUIRED
- 2. GNSS REQUIRED
- 3. RF REQUIRED
- 4. APPROACH NOT AUTHORIZED WHEN AIRPORT TEMPERATURE BELOW 17°C OR ABOVE 40°C.
- 5. WBKK ALTIMETER SETTING REQUIRED.
- 6. PAPI AND VERTICAL PATH ANGLE NOT COINCIDENT.
- 7. CLIMB GRADIENT 2.6% REQUIRED TO REACH KK482 AT 4000 FT.
- 8. RNP 1.0 REQUIRED FROM KK580 TO DOGVU.
- 9. RNP 0.3 REQUIRED FROM IAF'S TO FAF

CHANGES : CHART IDENTIFICATION