

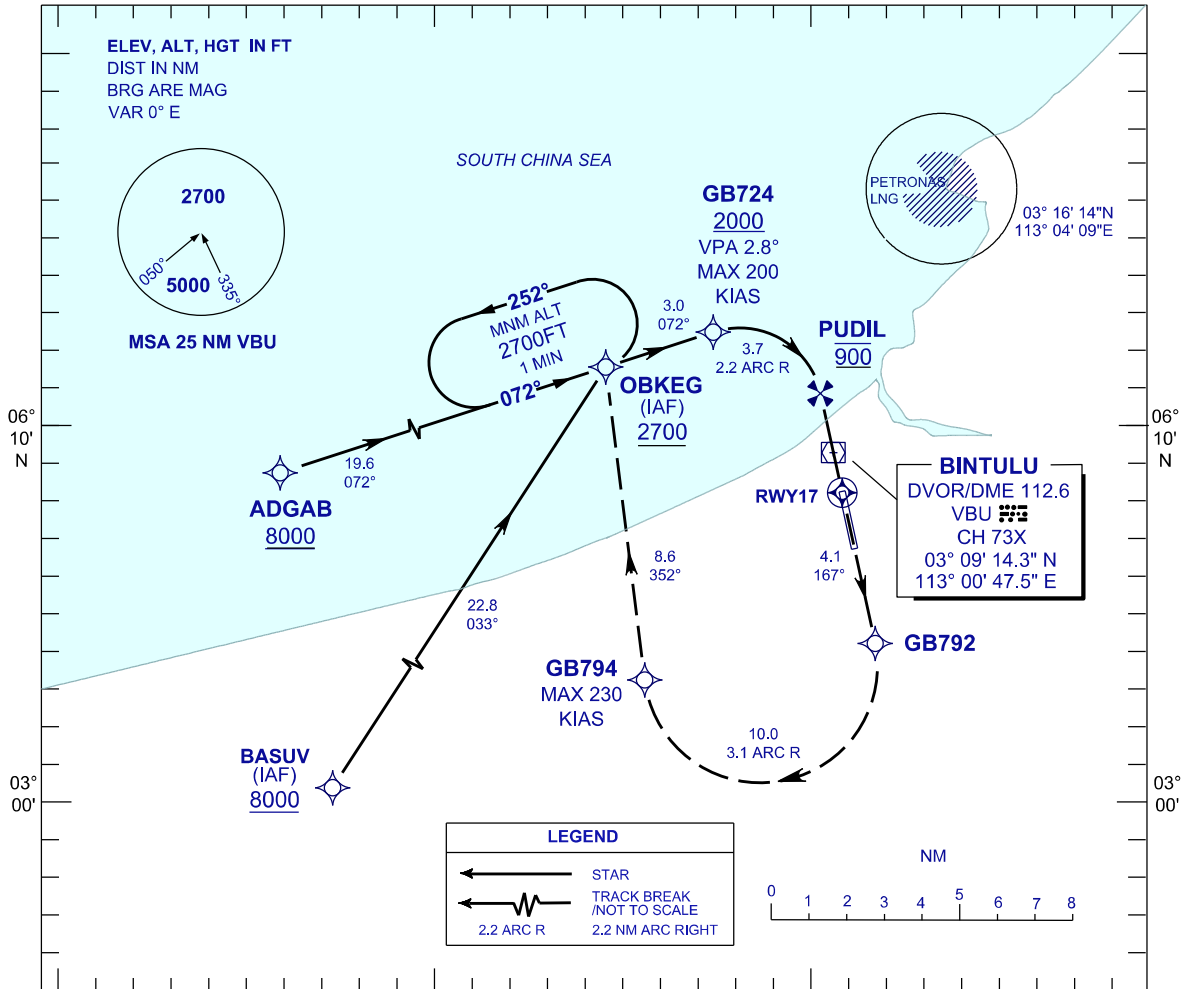
**INSTRUMENT APPROACH CHART - ICAO**

**AERODROME ELEV 75 FT**  
HEIGHTS RELATED TO THR RWY 17 - ELEV 34 FT

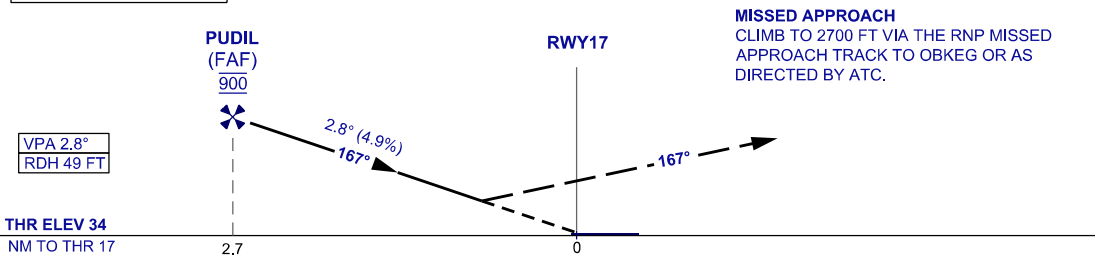
TWR / APP	122.30 (P)
	119.25 (S)
	121.5
SMC	121.8
ATIS	127.8

**BINTULU/BINTULU (WBGB)**

**RNP Z RWY 17 (AR)**



TRANSITION LEVEL FL 130  
TRANSITION ALT 11000



OCA/H	
ACFT CAT.	C      D
RNP 0.3	598 (564) / 2.4 KM

GROUND SPEED - KT	70	90	100	120	140	160
RATE OF DESCENT (2.8°) (FT/MIN)	347	446	495	594	693	792
DISTANCE TO THRESHOLD (NM)	2.7	2	1			
ALTITUDE (FT)	900	670	370			

- 1. AUTHORIZATION REQUIRED
- 2. GNSS REQUIRED
- 3. RF REQUIRED
- 4. APPROACH NOT AUTHORIZED WHEN AIRPORT TEMPERATURE BELOW 20°C OR ABOVE 36°C
- 5. WBGB ALTIMETER SETTING REQUIRED.
- 6. PAPI AND VERTICAL PATH ANGLE NOT COINCIDENT
- 7. PROCEDURE REQUIRES RNP 0.3 FROM IAFS TO RWY

CHANGES: CHART IDENTIFICATION, AMEND SPEED FOR WPT GB724 AND WPT GB794, ADD LEGEND TABLE & AERODROME ELEV.