

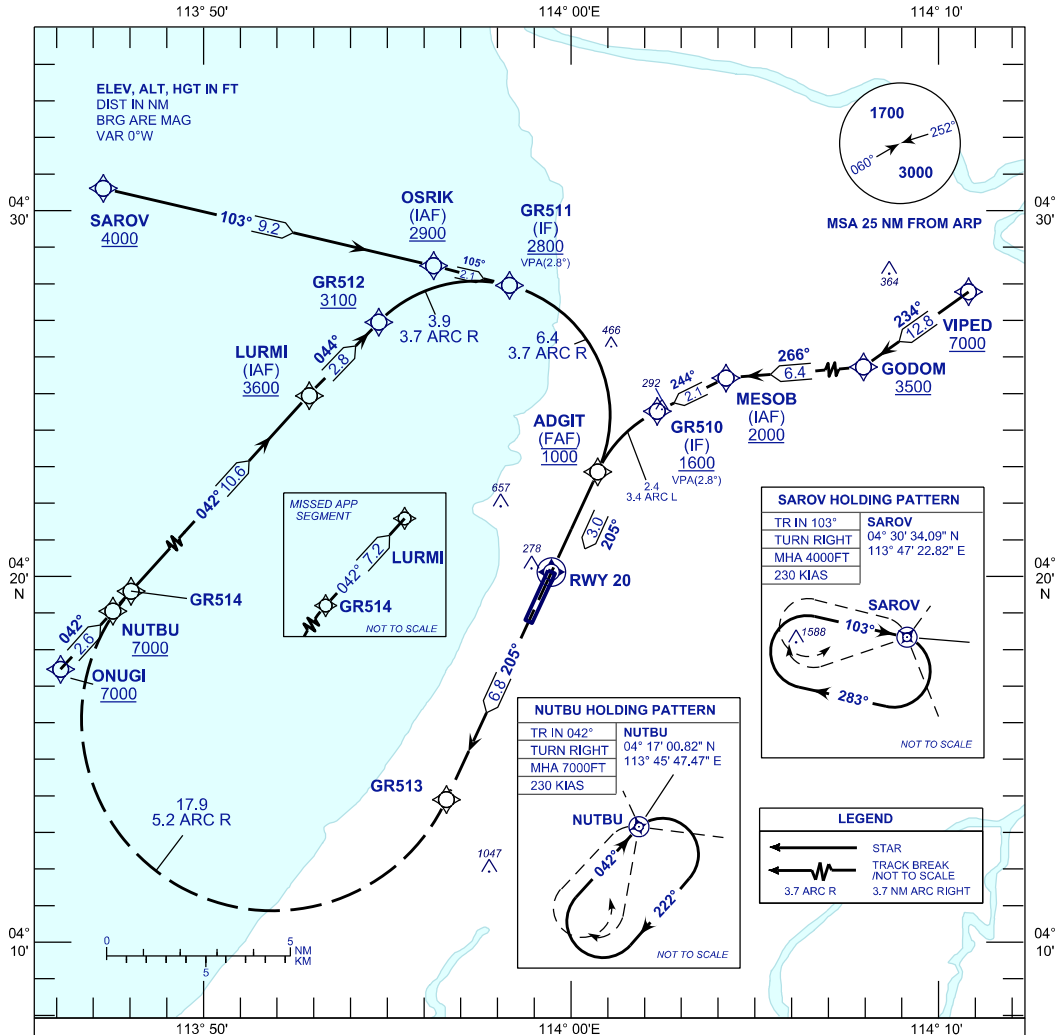
**INSTRUMENT  
APPROACH  
CHART - ICAO**

AERODROME ELEV 59 FT  
HEIGHT RELATED TO  
THR RWY 20 - ELEV 59 FT

APP	129.9 (P)
TWR	123.30
SMC	121.9
CATIS	127.0

**MIRI/MIRI (WBGR)**

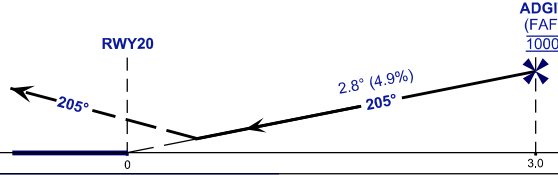
RNP Z RWY 20 (AR)



VPA 2.8°  
RDH 50FT

**MISSED APPROACH**  
CLIMB TO 3600FT VIA THE RNP MISSED APPROACH  
TRACK TO LURMI OR AS DIRECTED BY ATC

TRANSITION LEVEL FL130  
TRANSITION ALT 11 000



STRAIGHT - IN APPROACH	OCA (OCH)
CATEGORY OF AIRCRAFT	C D
RNP 0.3	490 (431)
CIRCLING AND ALTERNATE	N/A

GROUND SPEED - KT	70	90	100	120	140	160
RATE OF DESCENT (2.8°) (FEET/MIN)	347	446	495	594	693	792
DISTANCE TO THRESHOLD (NM)	3	2	1			
ALTITUDE (FEET)	1000	670	370			

- 1. AUTHORIZATION REQUIRED
- 2. GNSS REQUIRED
- 3. RF REQUIRED
- 4. APPROACH NOT AUTHORIZED WHEN AIRPORT TEMPERATURE BELOW 19°C OR ABOVE 38°C.
- 5. WBGR ALTIMETER SETTING REQUIRED.
- 6. PAPI AND VERTICAL PATH ANGLE NOT COINCIDENT.
- 7. RNP 2.0 REQUIRED FOR ARRIVAL HOLD AT SAROV.
- 8. RNP 1.0 REQUIRED FROM ONUGI TO LURMI
- 9. RNP 0.3 REQUIRED FROM IAF'S TO FAF.

CHANGES : CHART IDENTIFICATION