

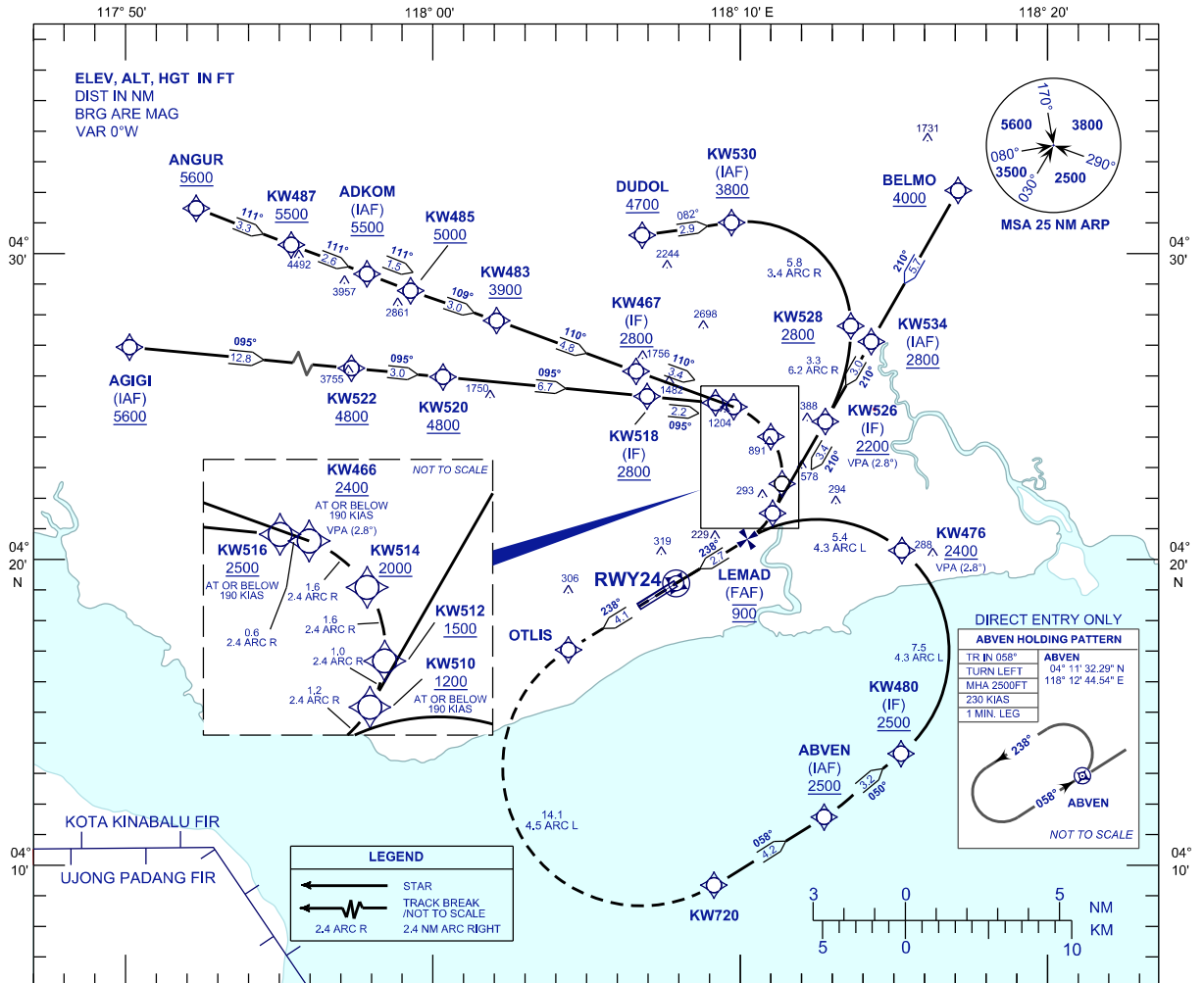
**INSTRUMENT
APPROACH
CHART - ICAO**

AERODROME ELEV 56 FT
HEIGHT RELATED TO
THR RWY 24 - ELEV 36 FT

APP 123.55
TWR 122.50
SMC 121.90
ATIS 126.25

TAWAU/TAWAU (WBKW)

RNP Z RWY 24 (AR)

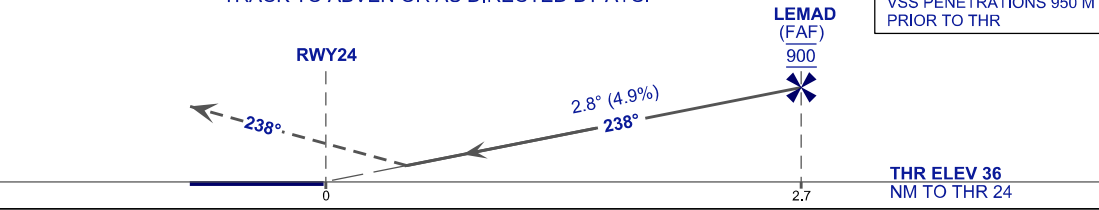


VPA 2.8°
RDH 54FT

MISSED APPROACH
CLIMB TO 2500 FT VIA THE RNP MISSED APPROACH
TRACK TO ABVEN OR AS DIRECTED BY ATC.

TRANSITION LEVEL FL130
TRANSITION ALT 11000 FT

VSS PENETRATIONS 950 M
PRIOR TO THR



STRAIGHT-IN APPROACH	OCA (OCH)
CATEGORY OF AIRCRAFT	C D
RNP 0.3	550 (514)
CIRCLING AND ALTERNATE N/A	

GROUND SPEED - KT	70	90	100	120	140	160
RATE OF DESCENT (2.8°) (FT/MIN)	347	446	495	594	693	792
DISTANCE TO THRESHOLD (NM)	2.7	2	1			
ALTITUDE (FT)	900	670	370			

- | | | |
|---|---|-----------------------|
| 1. AUTHORIZATION REQUIRED | 2. GNSS REQUIRED | 3. RF REQUIRED |
| 4. APPROACH NOT AUTHORIZED WHEN AIRPORT TEMPERATURE BELOW 18°C OR ABOVE 39°C. | 6. PAPI AND VERTICAL PATH ANGLE NOT COINCIDENT. | |
| 5. WBKW ALTIMETER SETTING REQUIRED. | | |
| 7. RNP 1.0 REQUIRED FROM ANGUR AND DUDOL TO IAF'S. | | |
| 8. RNP 0.3 REQUIRED FROM IAF'S TO FAF (EXCEPT KW534 TO KW526, STANDARD RNP 1.0 REQUIRED). | | |

CHANGES : CHART IDENTIFICATION