

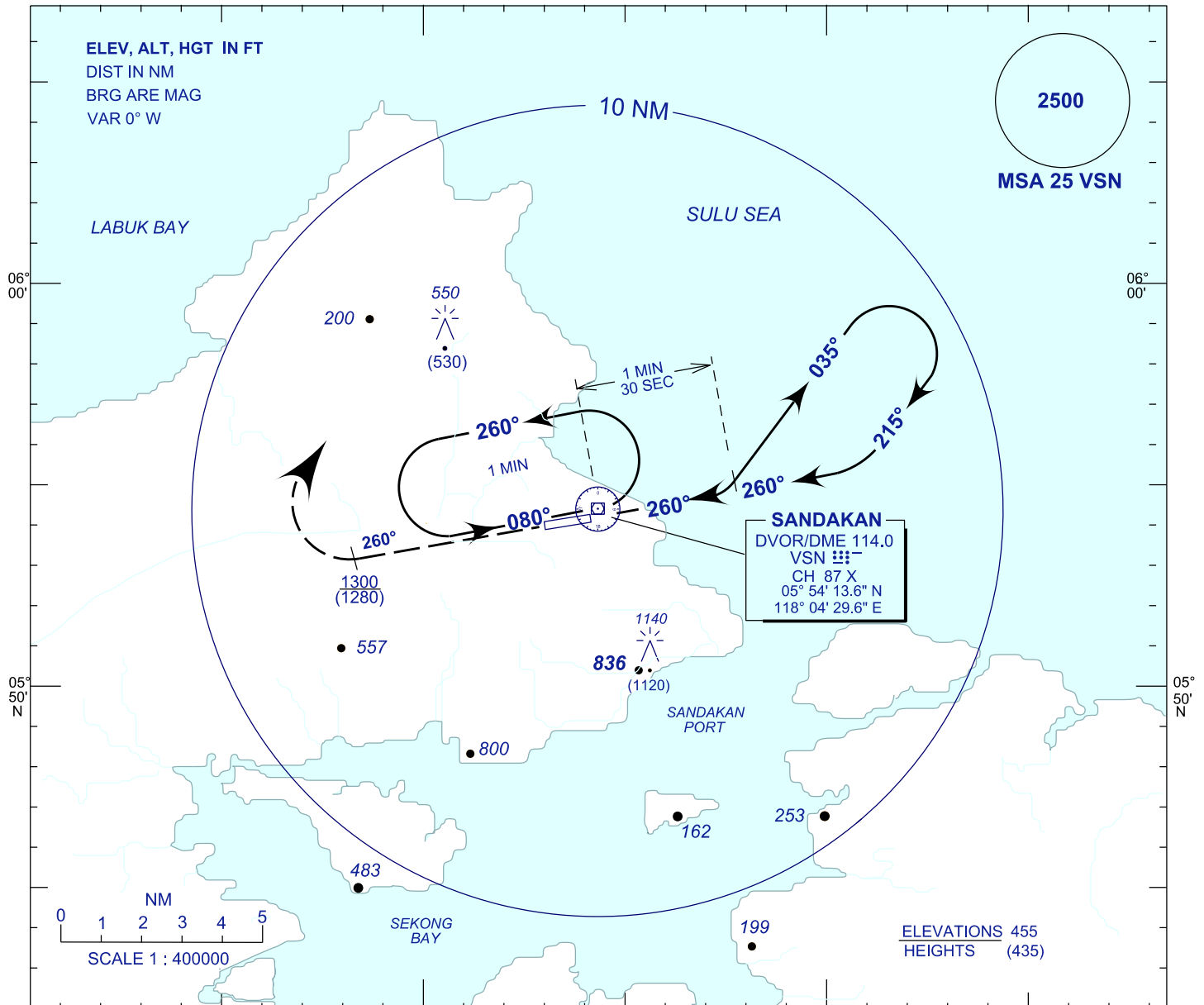
**INSTRUMENT
APPROACH
CHART - ICAO**

AERODROME ELEV 43 FT
HEIGHT RELATED TO
THR RWY 26 - ELEV 20FT

SMC 121.9
TWR 122.05
APP 123.2
ATIS 128.2

SANDAKAN/SANDAKAN (WBKS)
RWY 26 (CAT C & D)

VOR



BASED ON TAS 220 KT (STILL AIR)

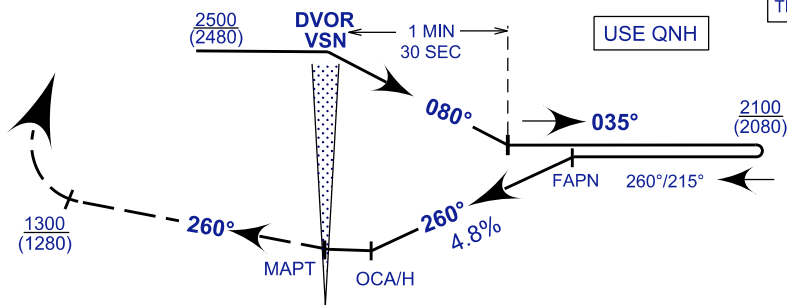
118° 00'

118° 10' E

TRANSITION LEVEL FL130
TRANSITION ALT 11000

MISSED APPROACH

AT MAPT CLIMB ON 260° TO 1300(1280) OR ABOVE, TURN RIGHT AND RETURN TO HOLDING PATTERN OR AS DIRECTED BY ATC.



USE QNH

THR ELEV 20
THR RWY 26

NM FROM VOR

5

0

5

OCA (OCH)				
CATEGORY OF AIRCRAFT	A	B	C	D
VOR/DME	-	-	400 (380)	-
CIRCLING	-	-	1400 (1380)	-
CAUTION	RIGHT HAND CIRCLING ONLY			

TIME TO TRESHOLD RUNWAY 26 FROM FAPN DISTANCE 7.0 NAUTICAL MILES						
GROUND SPEED (KT)	70	90	120	150	180	210
MINUTES: SECONDS	-	-	3:30	2:48	2:19	2:00
4.8% DESCENT(FT/MIN)	-	-	585	732	880	1025

CHANGES : AERODROME ELEV