

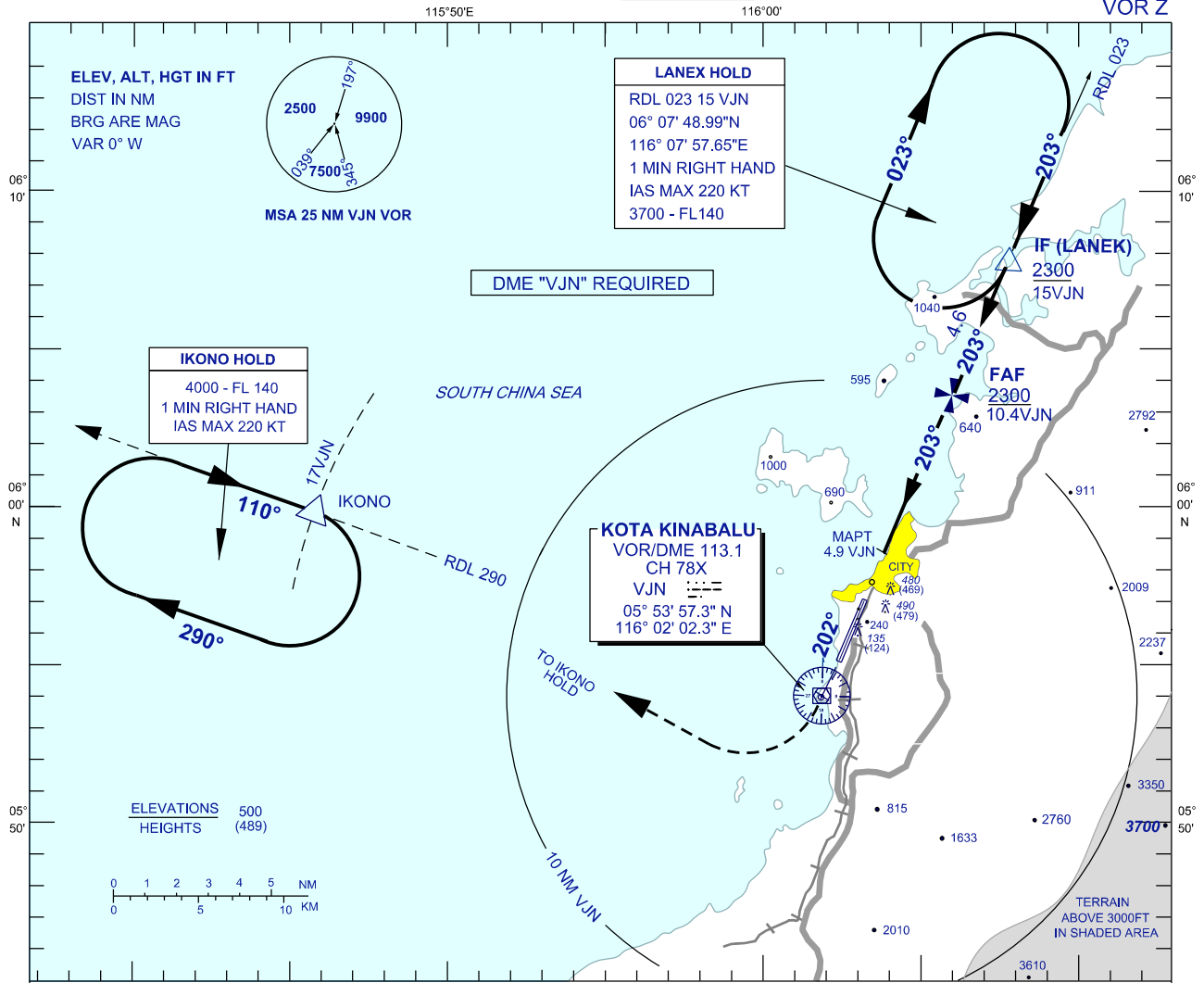
**INSTRUMENT
APPROACH
CHART - ICAO**

AERODROME ELEV 14 FT
HEIGHTS RELATED TO
THR RWY 20 - ELEV 11 FT

APP	119.1
TWR	118.3
GND	121.6
ATIS	127.4

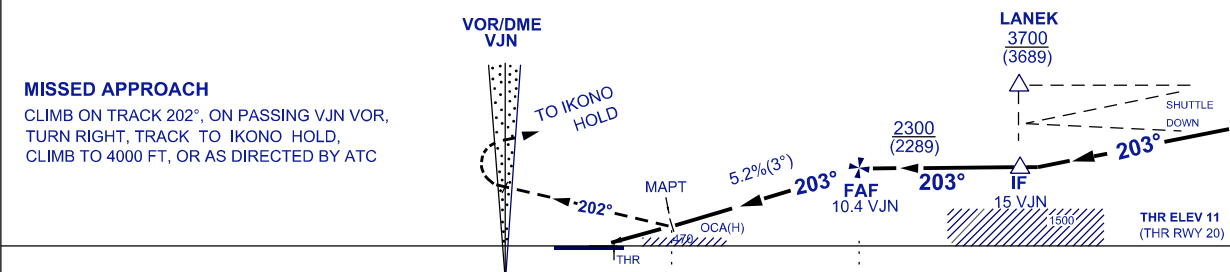
**KOTA KINABALU/
KOTA KINABALU (WBKK)**
RWY 20

VOR Z



DIST BY DME (VJN)	10.4	9.4	8.4	7.4	6.4	5.4	MAPT / 4.9
ALT 3° APCH PATH (FT)	2300(2289)	1982(1971)	1664(1653)	1346(1335)	1028(1017)	710(699)	630(619)

TRANSITION ALT 11000



OCA (H) FT		A	B	C	D
STRAIGHT-IN APPROACH	VOR / DME	630 (619) / 4.9 VJN			
CIRCLING/MNM VIS(NM)		850(839) / 1.0	850(839) / 1.5	1300(1289) / 2.0	1600(1589) / 2.5

GROUND SPEED (KT)		70	90	120	150	180
FAF - MAPT = 5.5 NM	MIN : SEC	4:42	3:39	2:45	2:12	1:50
RATE OF DESCENT (3°)	FT / MIN	371	476	634	793	951

CHANGES : REMOVE NDB JSL.