

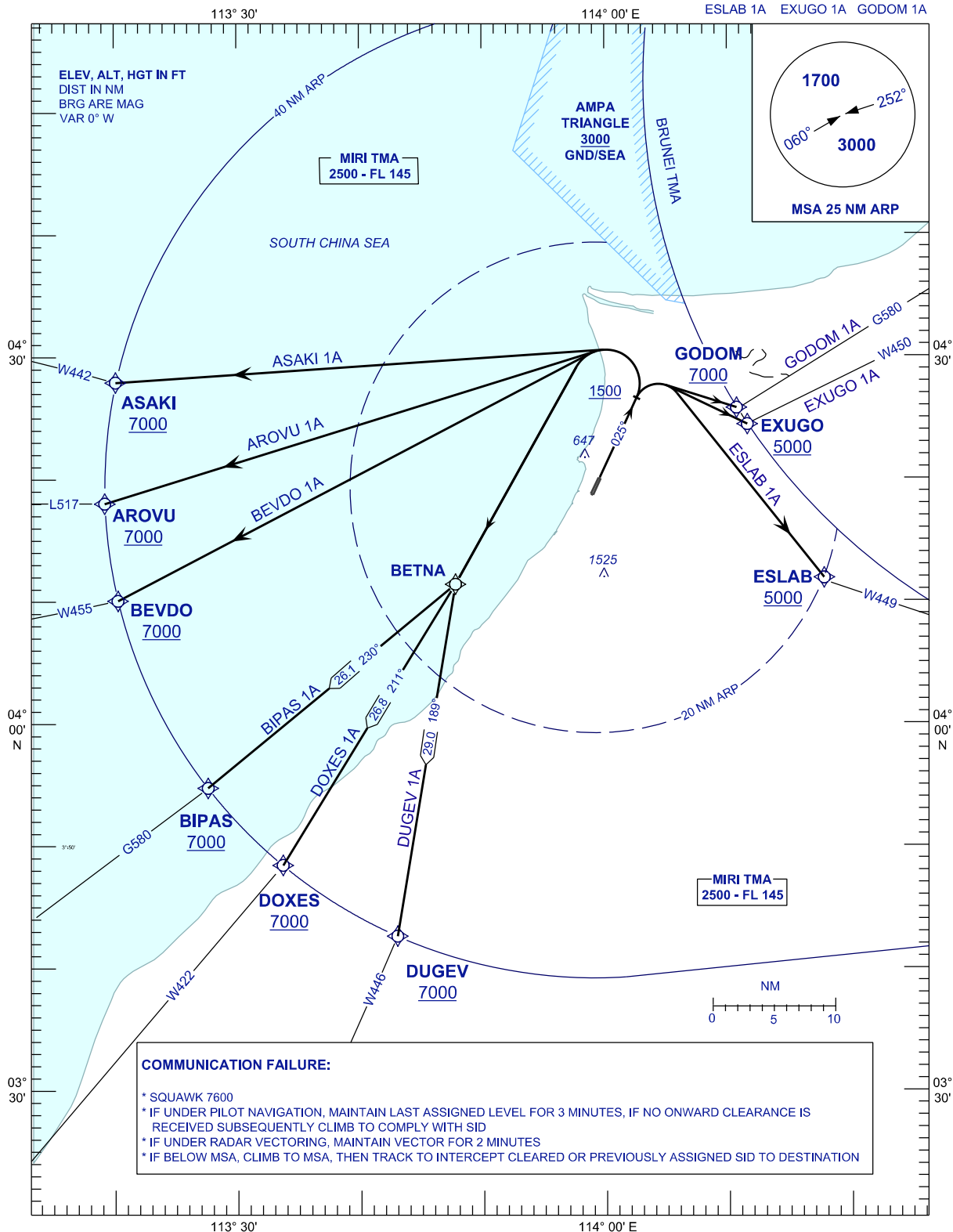
**STANDARD DEPARTURE CHART  
INSTRUMENT (SID) - ICAO**

TRANSITION ALTITUDE  
11 000 FT

APP	129.9 (P)
	122.7 (S)
TWR	123.3
SMC	121.9
CATIS	127.0

**MIRI/MIRI (WBGR)  
RWY 02  
RNAV (GNSS)**

ASAKI 1A	AROJU 1A	BEVDO 1A
BIPAS 1A	DOXES 1A	DUGEV 1A
ESLAB 1A	EXUGO 1A	GODOM 1A



**COMMUNICATION FAILURE:**

- \* SQUAWK 7600
- \* IF UNDER PILOT NAVIGATION, MAINTAIN LAST ASSIGNED LEVEL FOR 3 MINUTES, IF NO ONWARD CLEARANCE IS RECEIVED SUBSEQUENTLY CLIMB TO COMPLY WITH SID
- \* IF UNDER RADAR VECTORED, MAINTAIN VECTOR FOR 2 MINUTES
- \* IF BELOW MSA, CLIMB TO MSA, THEN TRACK TO INTERCEPT CLEARED OR PREVIOUSLY ASSIGNED SID TO DESTINATION

CHANGES : OBSTACLE HEIGHT