

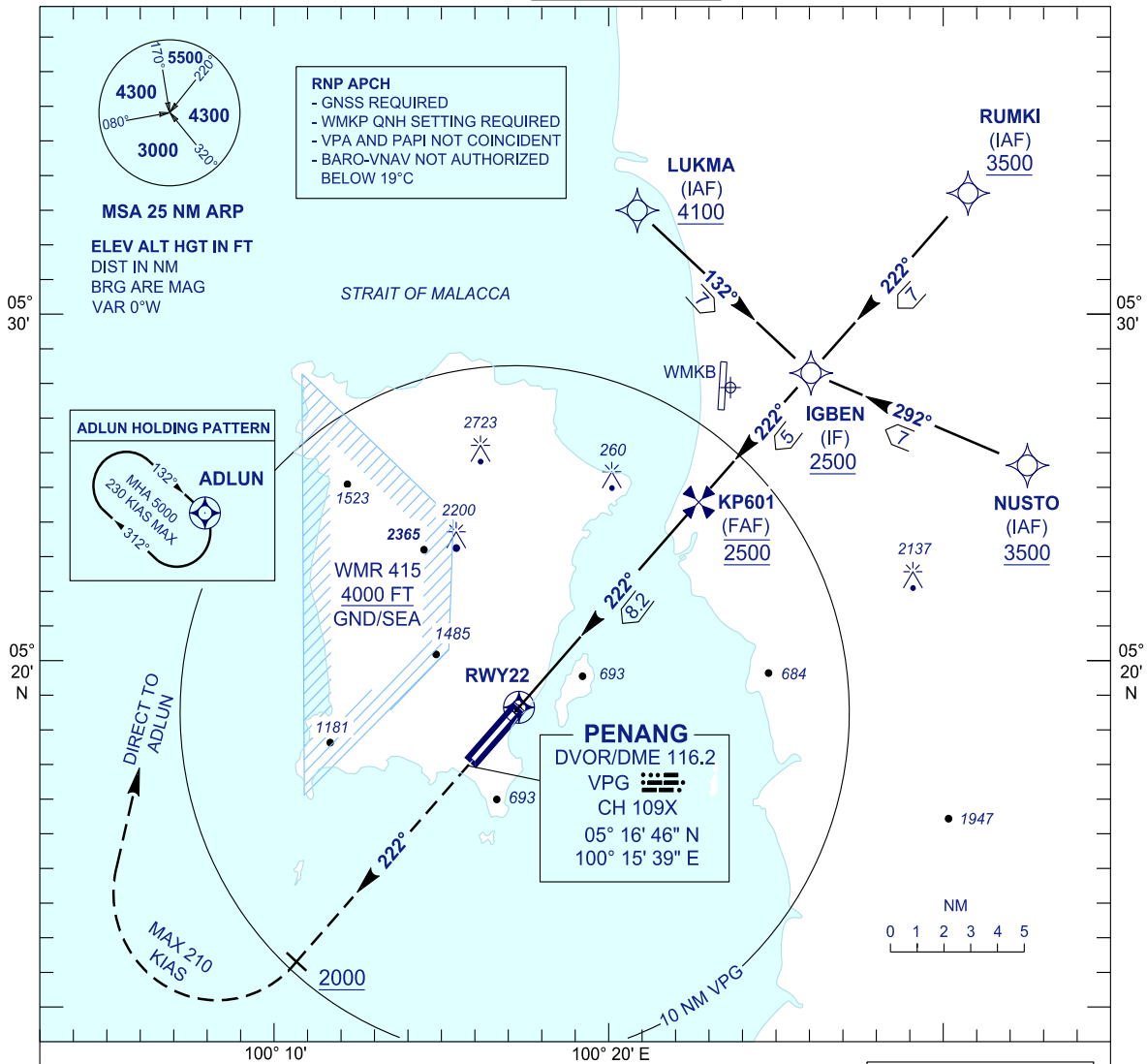
**INSTRUMENT
APPROACH
CHART - ICAO**

AERODROME ELEV 10 FT
HEIGHTS RELATED TO
THR RWY 22 - ELEV 10 FT

APP	125.925
TWR	121.1
SMC	121.6, 121.9
ATIS	126.4

**PENANG/PENANG
INTERNATIONAL AIRPORT (WMKP)**

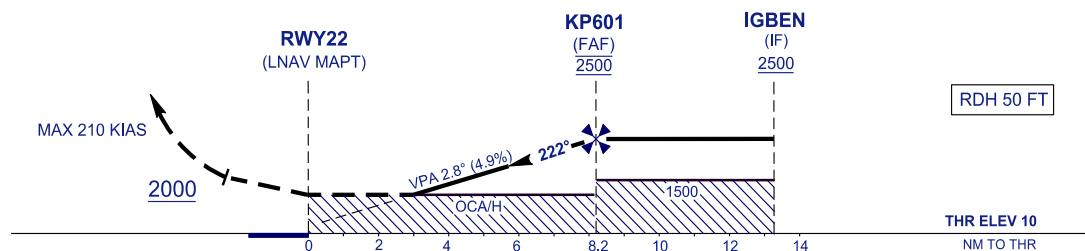
RNP Y RWY 22



MISSED APPROACH

CLIMB ON TR 222° TO 5000 FT. ON PASSING
2000 FT TURN RIGHT DIRECT TO ADLUN
HOLDING PATTERN OR AS DIRECTED BY ATC

TRANSITION LEVEL FL 130
TRANSITION ALT 11000



		OCA/H			
STARIGHT IN APPROACH	ACFT CAT.	A	B	C	D
	LNAV	920 (910)			
	LNAV/VNAV	820 (810)			
CIRCLING		1030 (1020)	1470 (1460)	1560 (1550)	1560 (1550)

GROUND SPEED - KT	70	90	100	120	140	160
RATE OF DESCENT (2.8°) (FT/MIN)	340	446	495	594	693	792

DISTANCE TO THRESHOLD (NM)	8.2	7	6	5	4	3	2
ALTITUDE (FT)	2500	2150	1850	1550	1250	950	660

* CIRCLING PROHIBITED IN SECTOR 250° - 020° FROM RWY 04

CHANGES : RENAMING CHART IDENTIFICATION