

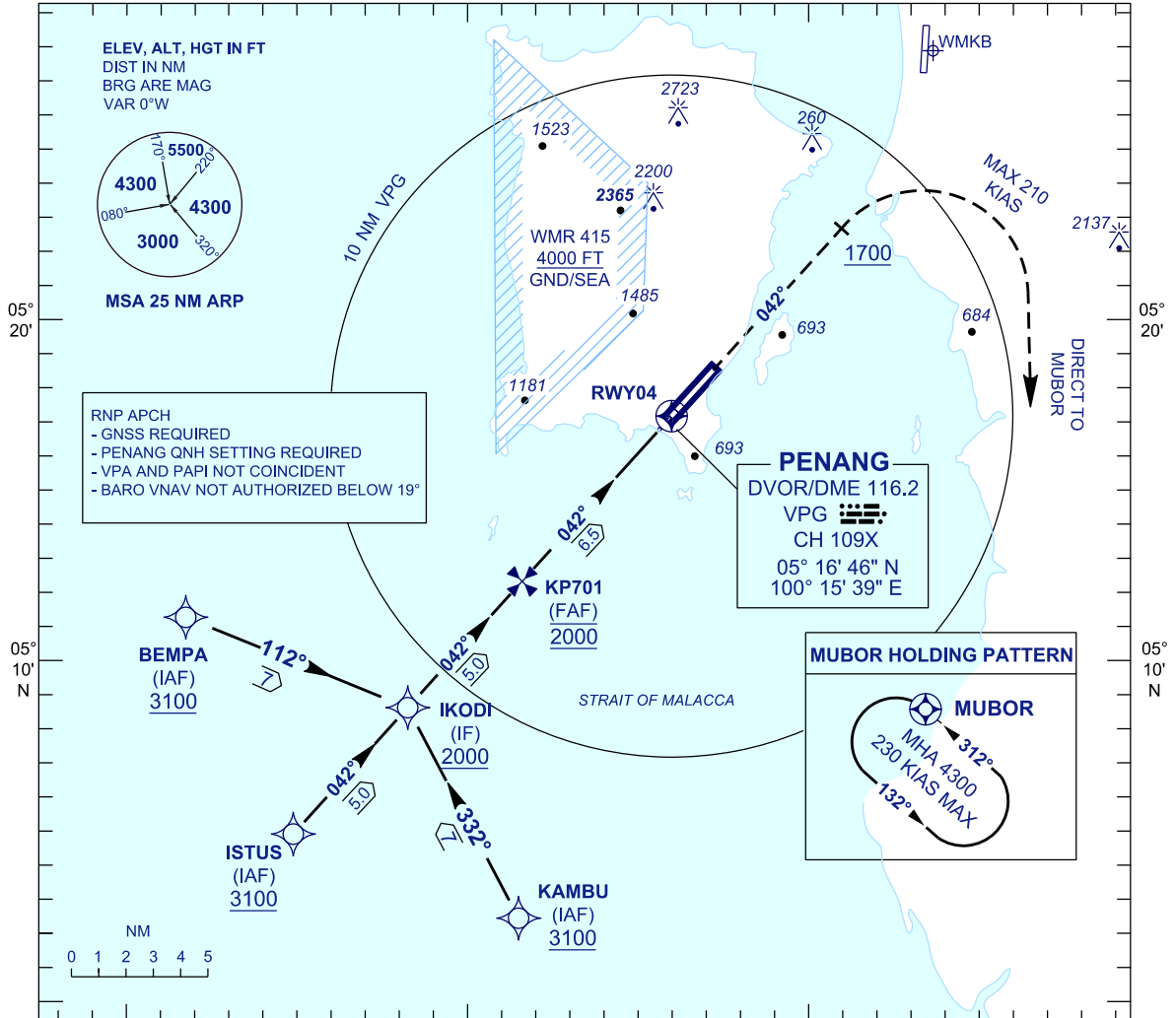
**INSTRUMENT  
APPROACH  
CHART - ICAO**

**AERODROME ELEV 10 FT**  
HEIGHTS RELATED TO  
THR RWY 04 - ELEV 9 FT

APP	125.925
TWR	121.1
SMC	121.6, 121.9
ATIS	126.4

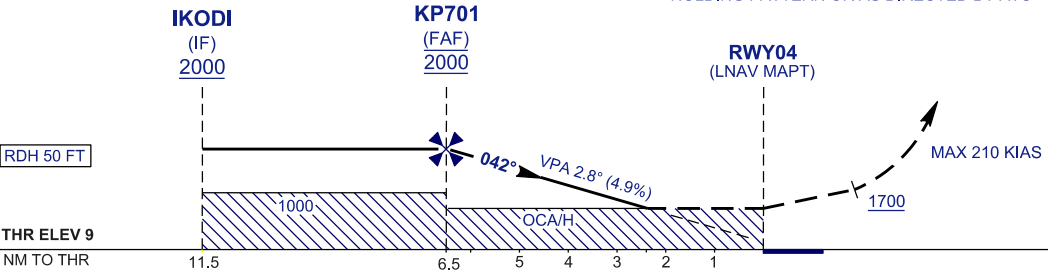
**PENANG/PENANG  
INTERNATIONAL AIRPORT (WMKP)**

RNP Y RWY 04



TRANSITION LEVEL FL 130  
TRANSITION ALT 11000

**MISSED APPROACH**  
CLIMB ON TR 042° TO 4300 FT. ON PASSING  
1700 FT TURN RIGHT DIRECT TO MUBOR  
HOLDING PATTERN OR AS DIRECTED BY ATC



		OCA/H			
STRAIGHT IN APPROACH	ACFT CAT.	A	B	C	D
	LNAV	<b>830 (821)</b>			
	LNAV/VNAV	<b>740 (731)</b>			
CIRCLING		1030 (1021)	1470 (1461)	1560 (1551)	1560 (1551)

GROUND SPEED - KT	80	100	120	140	160	180
RATE OF DESCENT (2.8°) (FT/MIN)	400	500	600	710	810	910
DISTANCE TO THRESHOLD (NM)	6.5	5	4	3	2	
ALTITUDE (FT)	2000	1550	1250	950	660	

\* CIRCLING PROHIBITED IN SECTOR 250° - 020° FROM RWY 04

CHANGES : RENAMING CHART IDENTIFICATION