

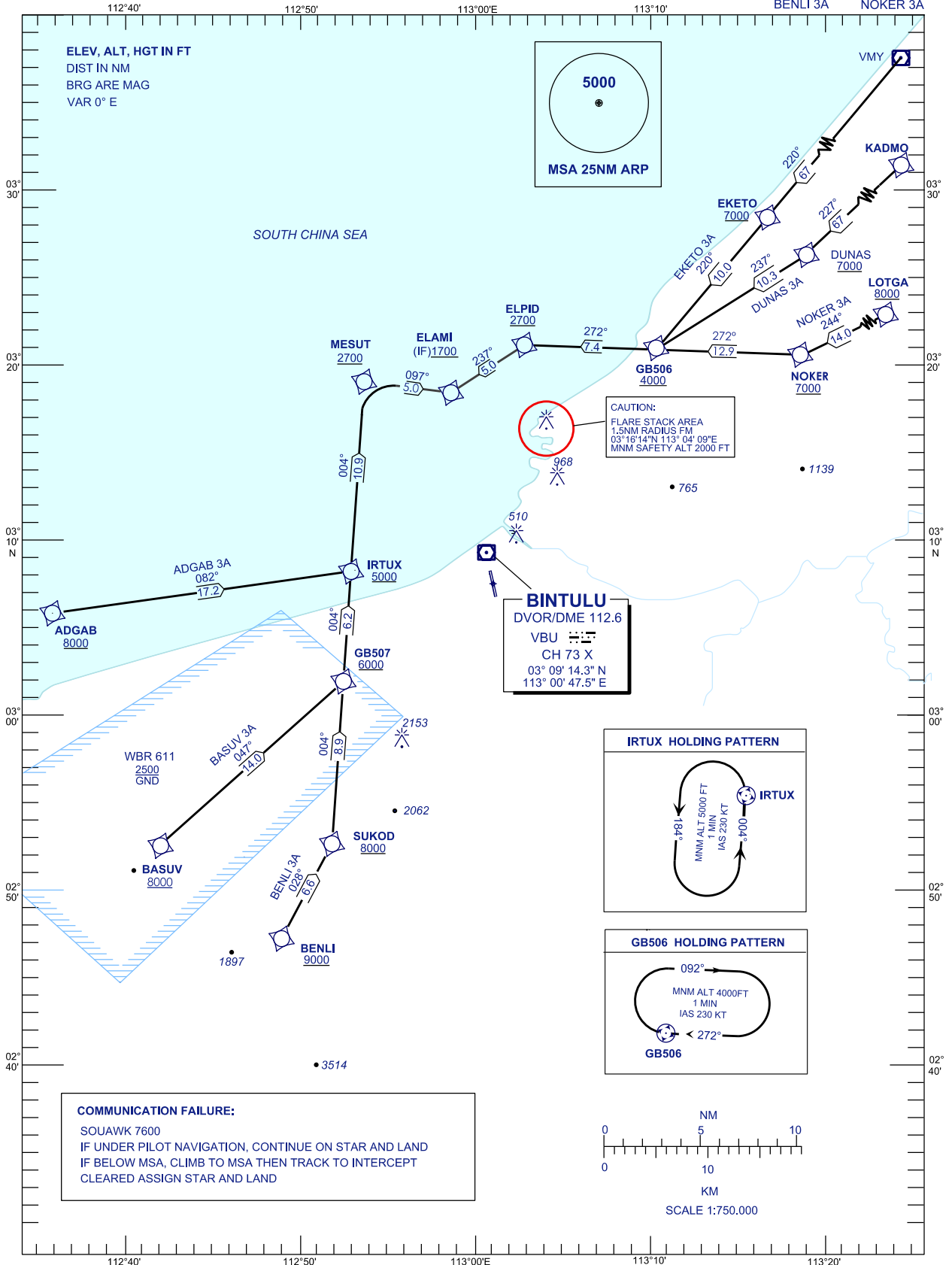
**STANDARD ARRIVAL CHART  
INSTRUMENT (STAR) - ICAO**

TRANSITION ALTITUDE  
11 000 FT

TWR/APP 122.3 (P),  
119.25 (S),  
121.5  
SMC 121.8  
ATIS 127.8

**BINTULU/BINTULU (WBGB)  
ARRIVALS RWY 17 (RNP 1)**

ADGAB 3A EKETO 3A  
BASUV 3A DUNAS 3A  
BENLI 3A NOKER 3A



**COMMUNICATION FAILURE:**  
SOUAWK 7600  
IF UNDER PILOT NAVIGATION, CONTINUE ON STAR AND LAND  
IF BELOW MSA, CLIMB TO MSA THEN TRACK TO INTERCEPT  
CLEARED ASSIGN STAR AND LAND

CHANGES : CHANGE MIRI VMI TO VMY