

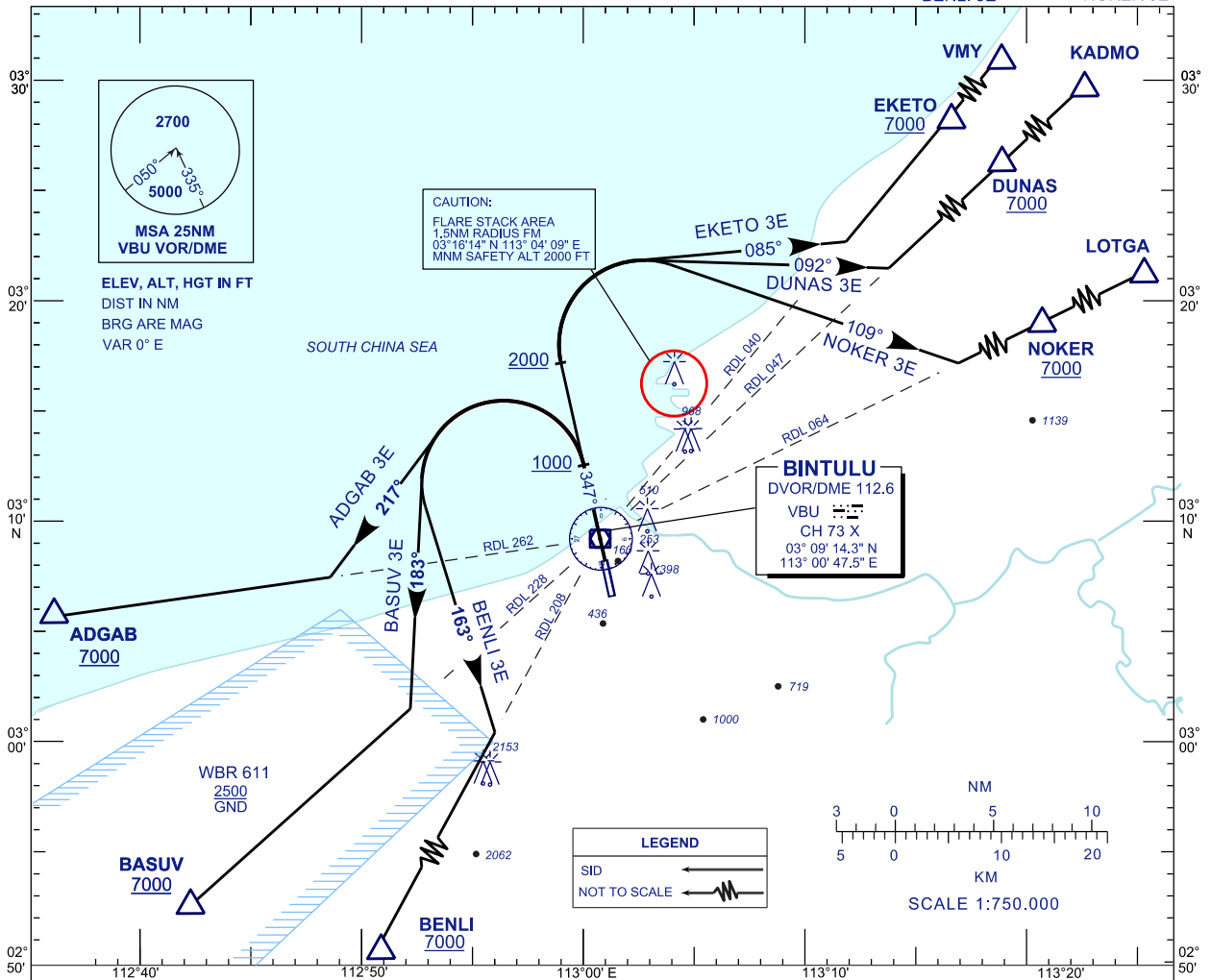
**STANDARD DEPARTURE CHART  
INSTRUMENT (SID) - ICAO**

TRANSITION ALTITUDE  
11,000 FT

TWR/APP 122.3 (P)  
119.25 (S)  
121.5  
SMC 121.8  
ATIS 127.8

**BINTULU/BINTULU (WBGB)  
DEPARTURES RWY 35**

ADGAB 3E EKETO 3E  
BASUV 3E DUNAS 3E  
BENLI 3E NOKER 3E



| CLIMB GRADIENT | FT/NM | GROUND SPEED (KT) |     |     |     |     |
|----------------|-------|-------------------|-----|-----|-----|-----|
|                |       | 150               | 180 | 210 | 240 | 270 |
| 3.3%           |       | 501               | 601 | 702 | 802 | 902 |
| 3.5%           |       | 532               | 638 | 744 | 851 | 957 |

**COMMUNICATION FAILURE :**

- SQUAWK 7600
- IF UNDER PILOT NAVIGATION, MAINTAIN LAST ASSIGNED LEVEL FOR 3 MINUTES, IF NO ONWARD CLEARANCE IS RECEIVED. SUBSEQUENTLY CLIMB TO COMPLY WITH SID.
- IF UNDER RADAR VECTORED : MAINTAIN VECTOR FOR 2 MINUTES, IF BELOW MSA, CLIMB TO MSA, THEN TRACK TO INTERCEPT CLEARED OR PREVIOUSLY ASSIGNED SID TO DESTINATION.

CHANGES : CHANGES MIRI VMI TO VMY.