

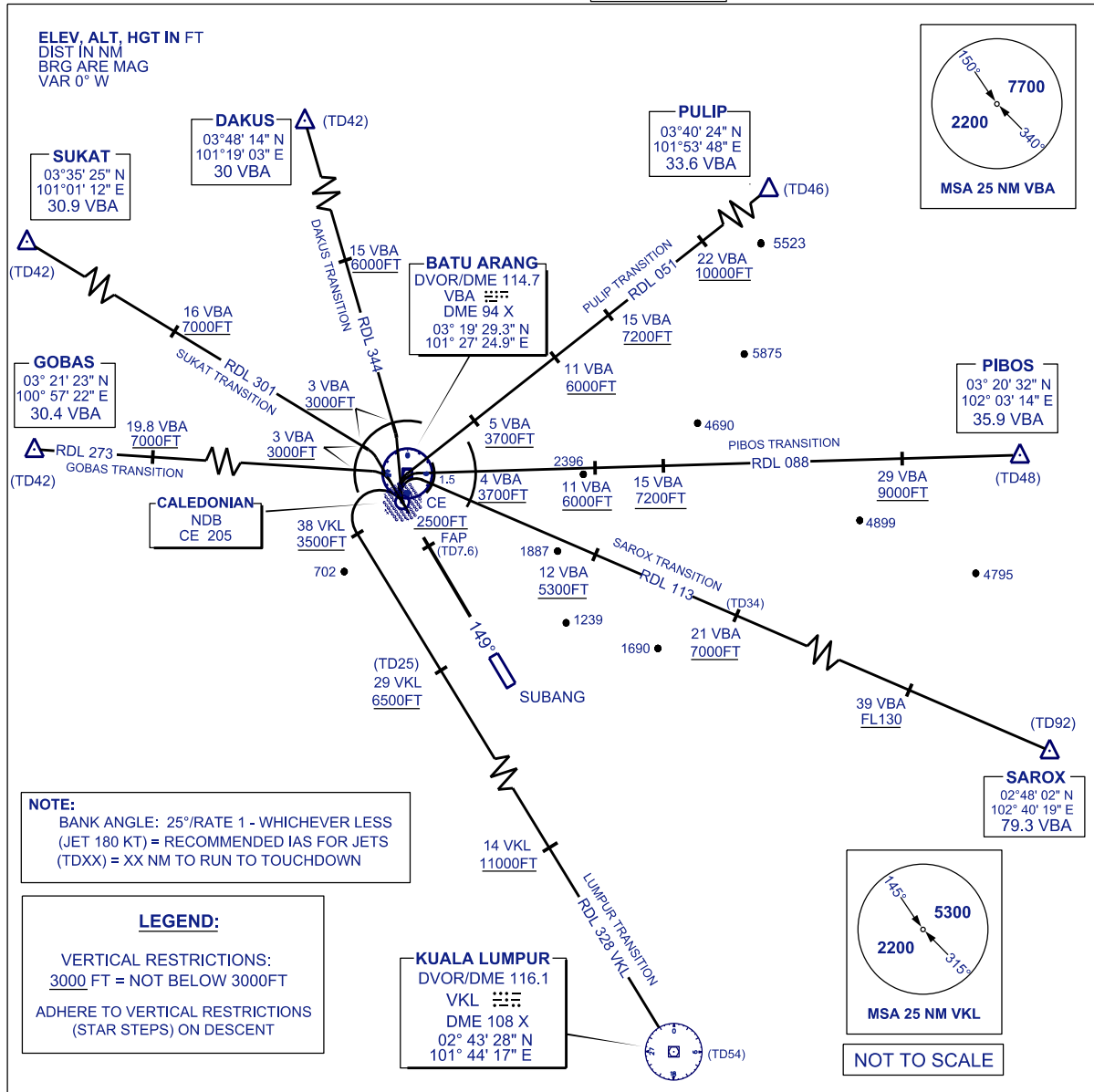
**STANDARD ARRIVAL CHART
INSTRUMENT (STAR) - ICAO**

TRANSITION LEVEL
FL130

ACD	120.45
SMC	121.9
TWR	118.2
APP	124.2, 118.65, 135.25
FIS	126.1
ATIS	127.6

**SUBANG/SULTAN ABDUL
AZIZ SHAH (WMSA)**

CALEDONIAN ONE ARRIVAL



TRANSITIONS:

DAKUS

FROM DAKUS TRACK 164° TO VBA VOR
AT 3 DME VBA TURN RIGHT, INTERCEPT LOC BY CE NDB
OR 10.6 DME ISB

SUKAT

FROM SUKAT TRACK 121° TO VBA VOR
AT 3 DME VBA TURN RIGHT, INTERCEPT LOC BY CE NDB
OR 10.6 DME ISB

GOBAS

FROM GOBAS TRACK 093° TO VBA
AT 3 DME VBA TURN RIGHT, INTERCEPT LOC BY CE NDB
OR 10.6 DME ISB

PULIP

FROM PULIP TRACK 231° TO VBA VOR
AT VBA VOR TURN LEFT (JET <=180 KT), INTERCEPT LOC AT CE NDB
OR 10.6 DME ISB

PIBOS

FROM PIBOS TRACK 268° TO VBA VOR
AT 1.5 DME VBA TURN LEFT (JET <=180 KT), INTERCEPT LOC AT CE NDB
OR 10.6 DME ISB

SAROX

FROM SAROX TRACK 293° TO VBA VOR
AT 1.5 DME VBA TURN LEFT (JET <=180 KT), INTERCEPT LOC AT CE NDB
OR 10.6 DME ISB

LUMPUR

FROM VKL VOR TRACK 328°
AT 38 DME VKL TURN RIGHT (JET <=210 KT), INTERCEPT LOC AT CE NDB
OR 10.6 DME ISB

ARRIVAL:

**CALEDONIAN
ONE**

FROM CE NDB OR 10.6 DME ISB MAKE STRAIGHT-IN ILS APPROACH TO RUNWAY 15
CONTACT TWR AT FAP

COMMUNICATIONS FAILURE:

SQUAWK 7600
IF UNDER PILOT NAVIGATION - CONTINUE ON STAR AND LAND.
IF UNDER RADAR VECTORING - MAINTAIN VECTOR FOR 1 MINUTE, IF BELOW MSA, CLIMB TO MSA
THEN TRACK TO INTERCEPT CLEARED OR PREVIOUSLY ASSIGNED STAR AND LAND.