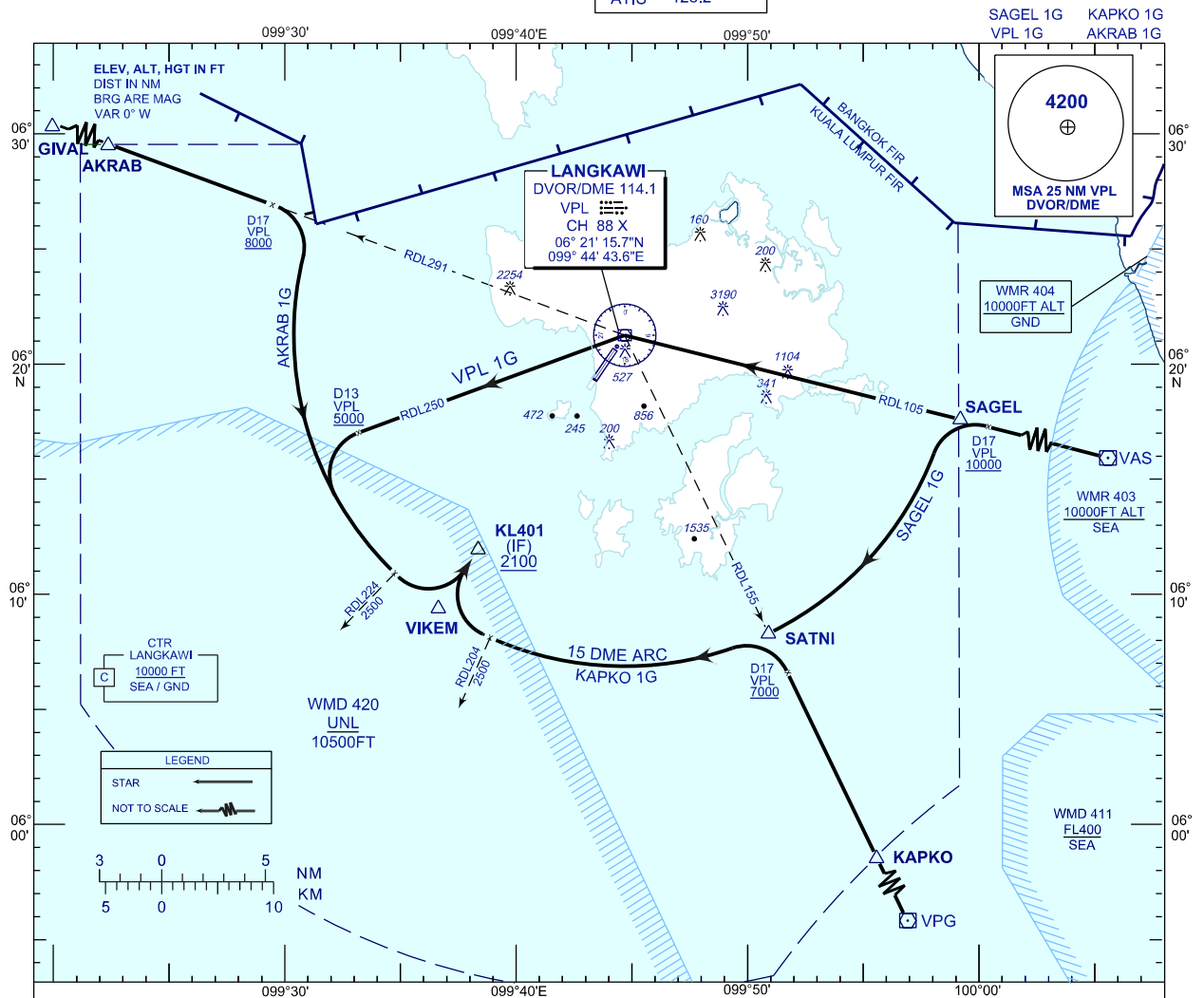


**STANDARD ARRIVAL CHART  
INSTRUMENT (STAR) - ICAO**

TRANSITION ALTITUDE  
11000 FT

APP 119.4, 257.8  
TWR 118.5  
SMC 121.8  
ATIS 128.2

**LANGKAWI/LANGKAWI  
INTERNATIONAL AIRPORT (WMKL)  
ARRIVAL (15 DME ARC) RWY 03**



**COMMUNICATION FAILURE :**

- SQUAWK 7600
- IF UNDER PILOT NAVIGATION, MAINTAIN LAST ASSIGNED LEVEL FOR 3 MINUTES, IF NO ONWARD CLEARANCE IS RECEIVED. SUBSEQUENTLY CLIMB TO COMPLY WITH STAR
- IF UNDER RADAR VECTORED : MAINTAIN VECTOR FOR 2 MINUTES, IF BELOW MSA, CLIMB TO MSA, THEN TRACK TO INTERCEPT CLEARED OR PREVIOUSLY ASSIGNED STAR TO DESTINATION.

DESIGNATOR	STAR DESCRIPTION
<b>SAGEL 1 GOLF</b>	FROM VAS VOR TRACK INBOUND ON RDL 105 VPL VOR TO SAGEL. AT D17 VPL TURN LEFT TO JOIN 15 DME ARC VPL VOR FOR VOR/DME APCH OR ILS DME OR LOC/DME APP RWY 03.
<b>KAPKO 1 GOLF</b>	FROM VPG VOR TRACK INBOUND ON RDL 155 VPL VOR TO KAPKO. AT D17 VPL TURN LEFT TO JOIN 15 DME ARC VPL VOR FOR VOR/DME APCH OR ILS DME OR LOC/DME APP RWY 03.
<b>AKRAB 1 GOLF</b>	FROM GIVAL TRACK INBOUND ON RDL 291 VPL VOR TO AKRAB AT D17 VPL TURN RIGHT TO JOIN 15 DME ARC VPL VOR FOR VOR/DME APCH OR ILS DME OR LOC/DME APP RWY 03.
<b>VPL 1 GOLF</b>	FROM VAS VOR TRACK INBOUND ON RDL 105 VPL VOR AND JOIN RDL 250 VPL AT D13 VPL TURN LEFT TO JOIN 15 DME ARC VPL VOR FOR VOR/DME APCH OR ILS DME OR LOC/DME APP RWY 03.

CHANGES : ADDITIONAL CHART AND INFO