

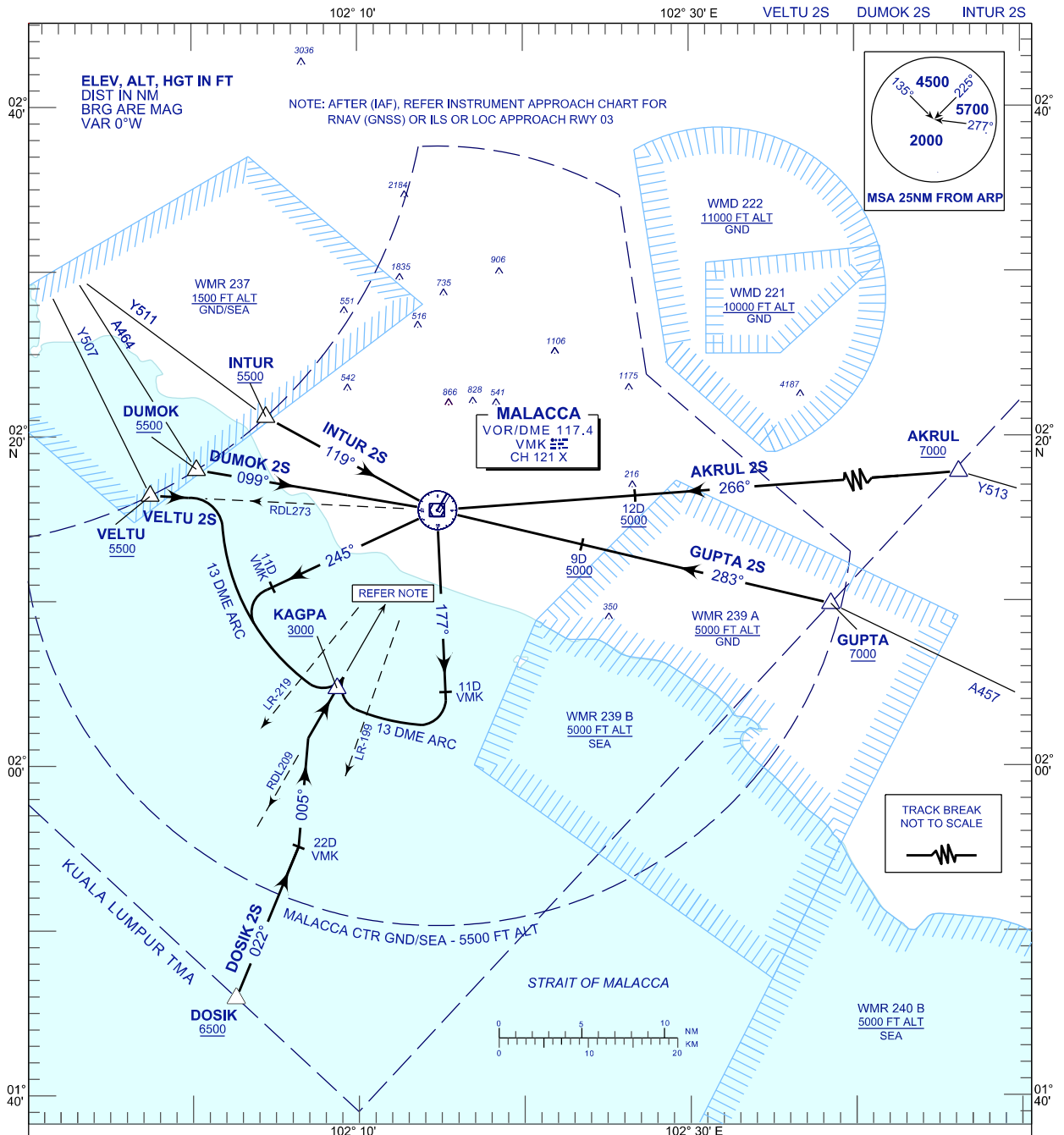
**STANDARD ARRIVAL CHART
INSTRUMENT (STAR) - ICAO**

TRANSITION ALTITUDE
11 000 FT

TWR	118.00
SMC	121.60
ATIS	127.45

**MALACCA/MALACCA (WMKM)
ARRIVAL (13 DME ARC) RWY03**

AKRUL 2S GUPTA 2S DOSIK 2S
VELTU 2S DUMOK 2S INTUR 2S



COMMUNICATION FAILURE :

SQUAWK 7600

- IF UNDER PILOT NAVIGATION, MAINTAIN LAST ASSIGNED LEVEL FOR 3 MINUTES, IF NO ONWARD CLEARANCE IS RECEIVED. SUBSEQUENTLY CLIMB/DESCEND TO COMPLY WITH STAR AND LAND.
- IF UNDER RADAR VECTORED : MAINTAIN VECTOR FOR 1 MINUTES, IF BELOW MSA, CLIMB TO MSA, THEN TRACK TO INTERCEPT CLEARED OR PREVIOUSLY ASSIGNED STAR AND LAND.