

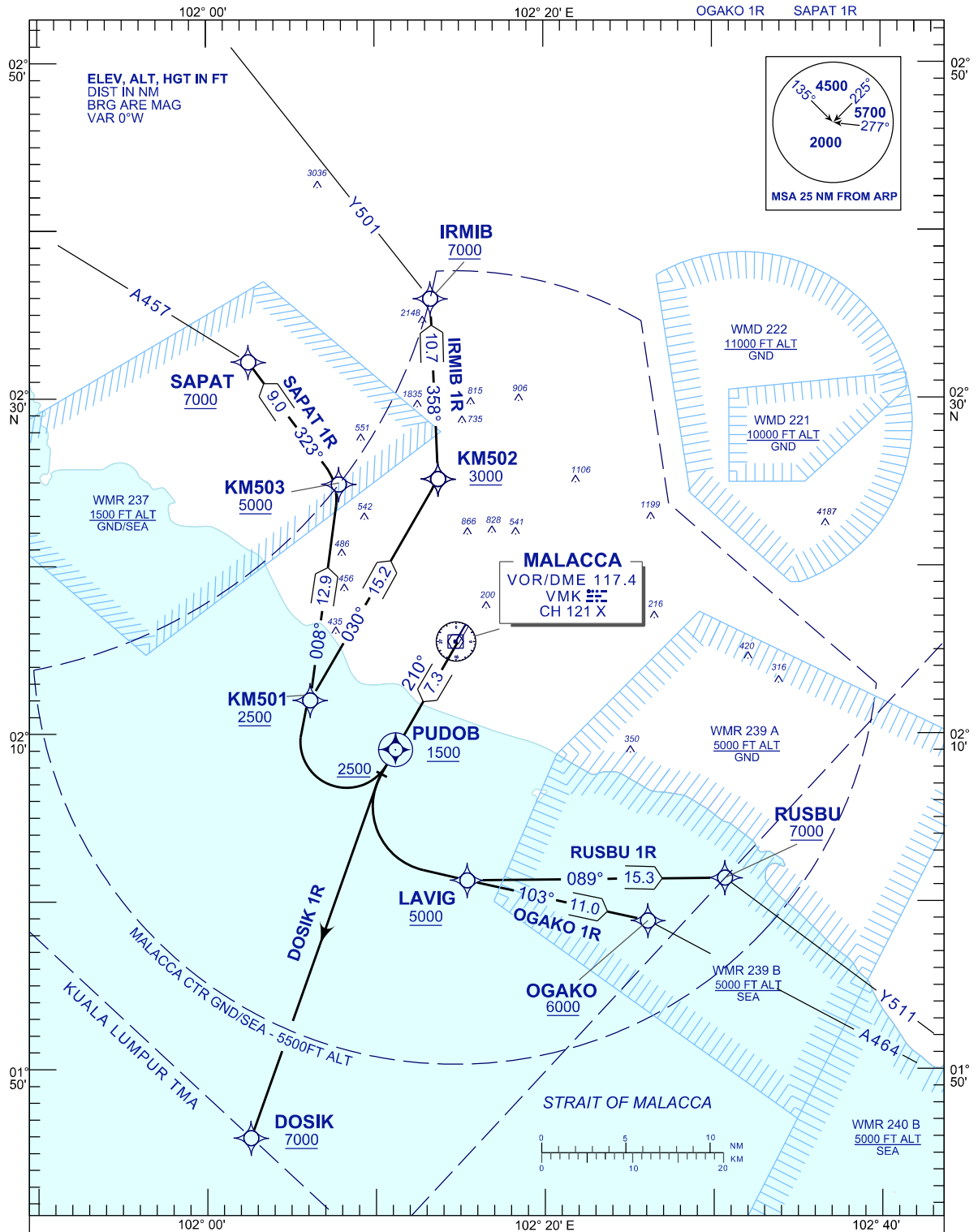
**STANDARD DEPARTURE CHART  
INSTRUMENT (SID) - ICAO**

TRANSITION ALTITUDE  
11 000 FT

TWR	118.00
SMC	121.60
ATIS	127.45

**MALACCA/MALACCA (WMKM)  
RNAV (GNSS) RWY21**

RUSBU 1R    DOSIK 1R    IRMIB 1R  
OGAKO 1R    SAPAT 1R



**COMMUNICATION FAILURE :**

SQUAWK 7600

- IF UNDER PILOT NAVIGATION, MAINTAIN LAST ASSIGNED LEVEL FOR 3 MINUTES, IF NO ONWARD CLEARANCE IS RECEIVED. SUBSEQUENTLY CLIMB TO COMPLY WITH SID.
- IF UNDER RADAR VECTORED : MAINTAIN VECTOR FOR 2 MINUTES, IF BELOW MSA, CLIMB TO MSA, THEN TRACK TO INTERCEPT CLEARED OR PREVIOUSLY ASSIGNED SID TO DESTINATION.

**CHANGES:** CHANGE FLYOVER PUDOB TO KM501,  
PUDOB SYMBOL