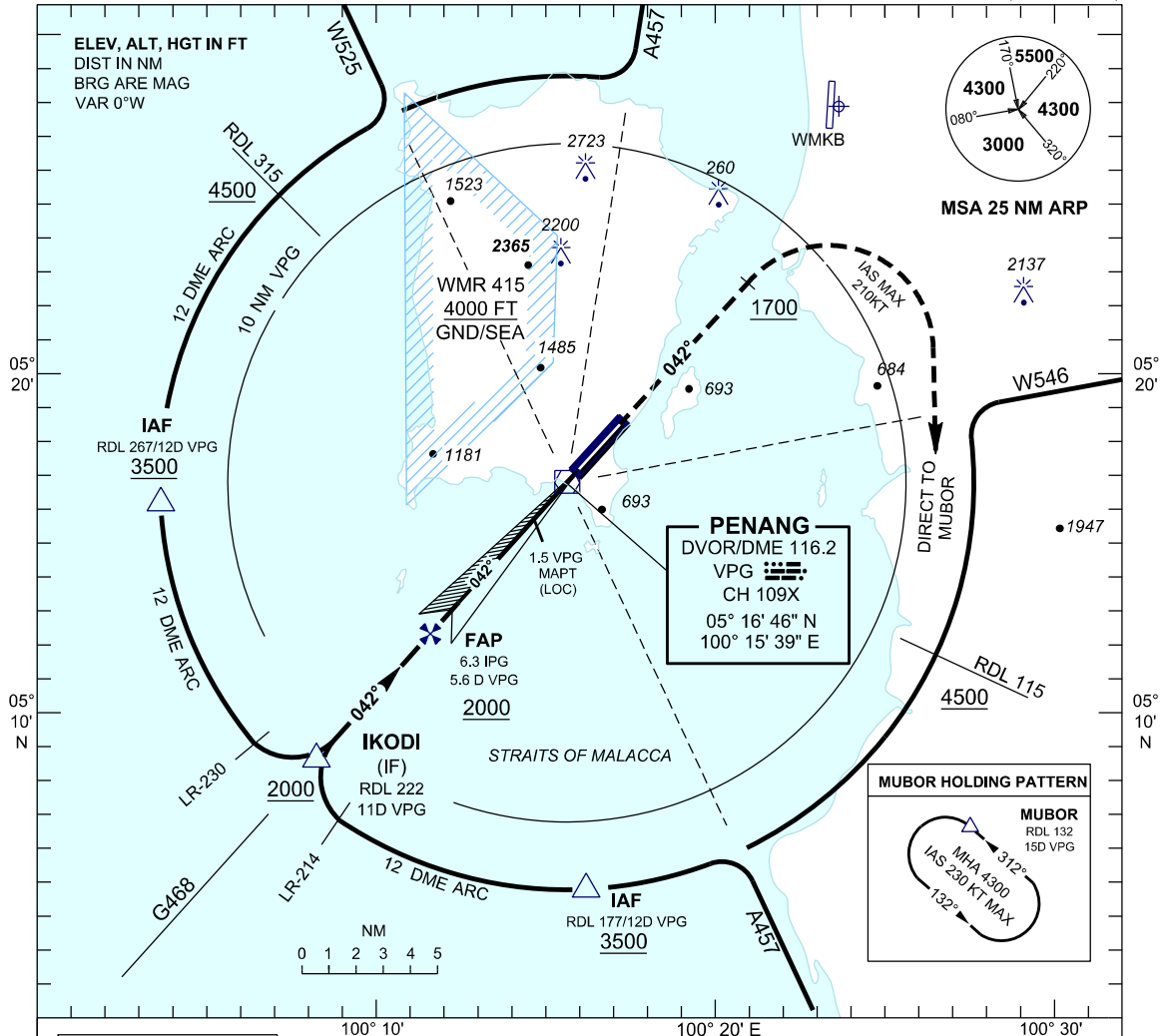


**INSTRUMENT APPROACH CHART - ICAO**

AERODROME ELEV 10 FT  
HEIGHTS RELATED TO THR RWY 04 - ELEV 9 FT

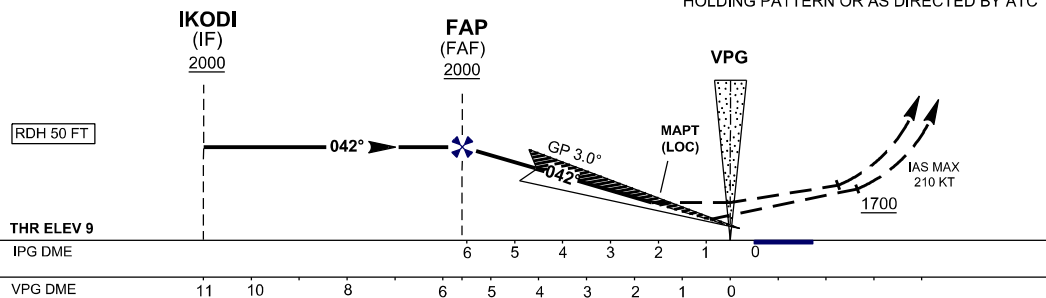
APP 125.925  
TWR 121.1  
SMC 121.6, 121.9  
ATIS 126.4

**PENANG/PENANG INTERNATIONAL AIRPORT (WMKP) RWY 04**  
ILS Z OR LOC Z (12 DME ARC)



TRANSITION LEVEL FL 130  
TRANSITION ALT 11000

**MISSED APPROACH**  
CLIMB ON TR 042° TO 4300 FT. ON PASSING 1700 FT TURN RIGHT DIRECT TO MUBOR HOLDING PATTERN OR AS DIRECTED BY ATC



		OCA/H			
STRAIGHT IN APPROACH	ACFT CAT.	A	B	C	D
	ILS CAT 1	532 (523)			
	LOC ONLY	690 (681) / 1.5 VPG			
CIRCLING		1030 (1021)	1470 (1461)	1560 (1551)	1560 (1551)

DME IPG	NM	6.2	5.2	4.2	3.2	2.2	1.2
DIST THR (RWY04)	NM	6.0	5.0	4.0	3.0	2.0	1.0
ALTITUDE	FT	1970	1650	1330	1020	710	400

\* CIRCLING PROHIBITED IN SECTOR 250° - 020° FROM RWY 04

CHANGES : AMEND FREQ FOR APP.