

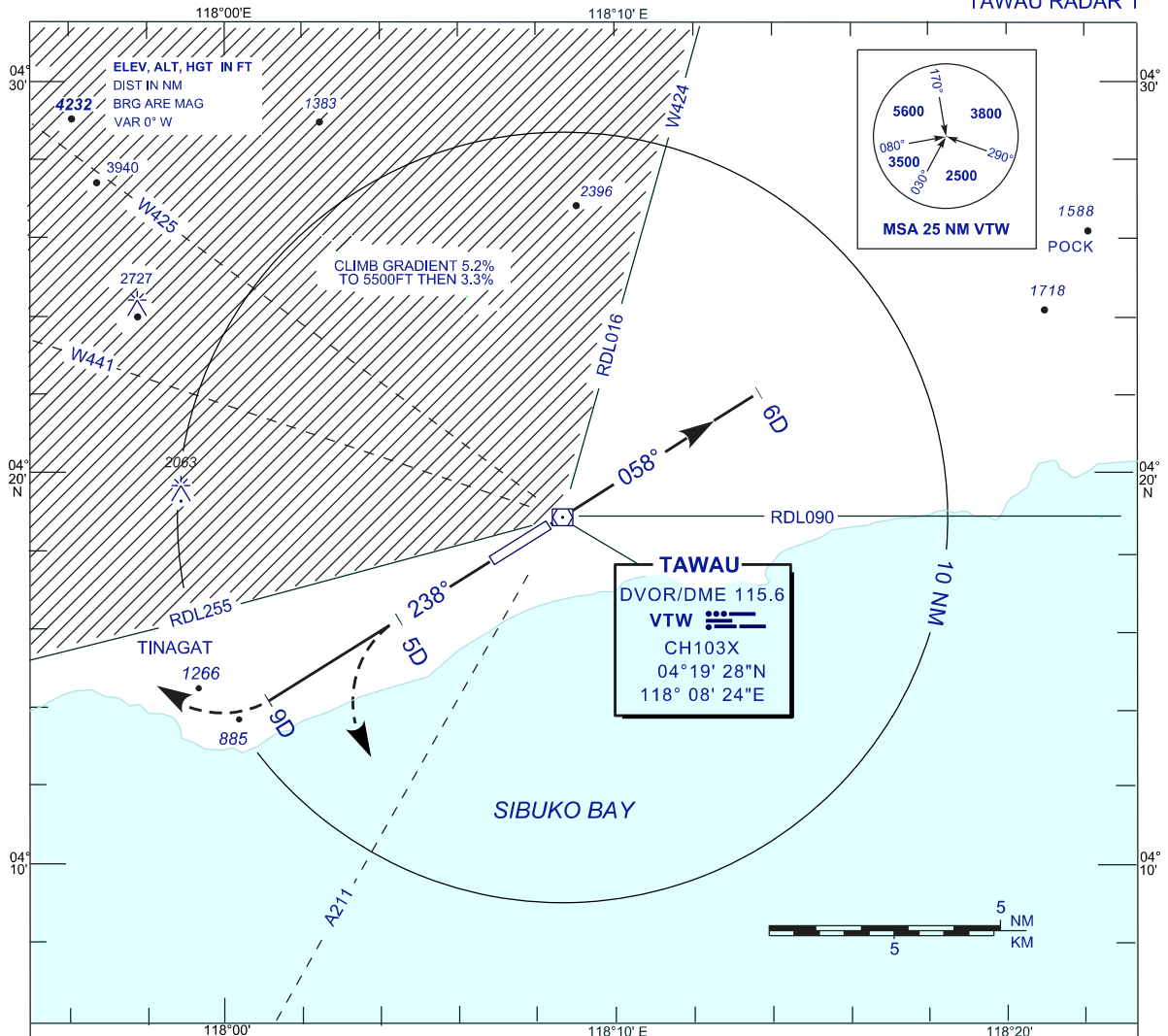
**STANDARD DEPARTURE CHART
INSTRUMENT (SID) - ICAO**

TRANSITION ALTITUDE
11 000 FT

SMC 121.90
TWR 122.50
APP 123.55
ATIS 126.25

**TAWAU/TAWAU (WBKW)
RWY 06/24**

TAWAU RADAR 1



TAWAU RADAR ONE DEPARTURE

RWY06

TRACK HEADING 058° AT 6 DME
TURN TO ASSIGNED HEADING
CONTACT TAWAU APPROACH
WHEN AIRBORNE

RWY24

TRACK HEADING 238° AT 5 DME
TURN LEFT OR AT 9 DME
TURN RIGHT TO ASSIGNED HEADING
CONTACT TAWAU
APPROACH WHEN AIRBORNE

		RATE OF CLIMB					
		75	100	150	200	250	300
GRADIENT	3.3%	251	334	501	668	835	1003
	5.2%	395	527	790	1053	1316	1580

CLIMB GRADIENT :

MINIMUM CLIMB GRADIENT 3.3% UNLESS OTHERWISE SPECIFIED USE 5.2% CLIMB GRADIENT FROM LIFT - OFF IF ASSIGNED HEADING WILL TAKE AIRCRAFT INTO HATCHED AREA.

COMMUNICATION FAILURE :

IMMEDIATELY SQUAWK 7600
MAINTAIN ASSIGNED HEADING CLIMB TO MSA OR LAST ASSIGNED LEVEL IF HIGHER
MAINTAIN MSA OR ASSIGNED LEVEL AS APPLICABLE FOR 2 MINUTES
THEN CLIMB TO FLIGHT PLANNED LEVEL AND INTERCEPT FLIGHT PLANNED TRACK
(AS AMENDED BY ATC, IF APPLICABLE)